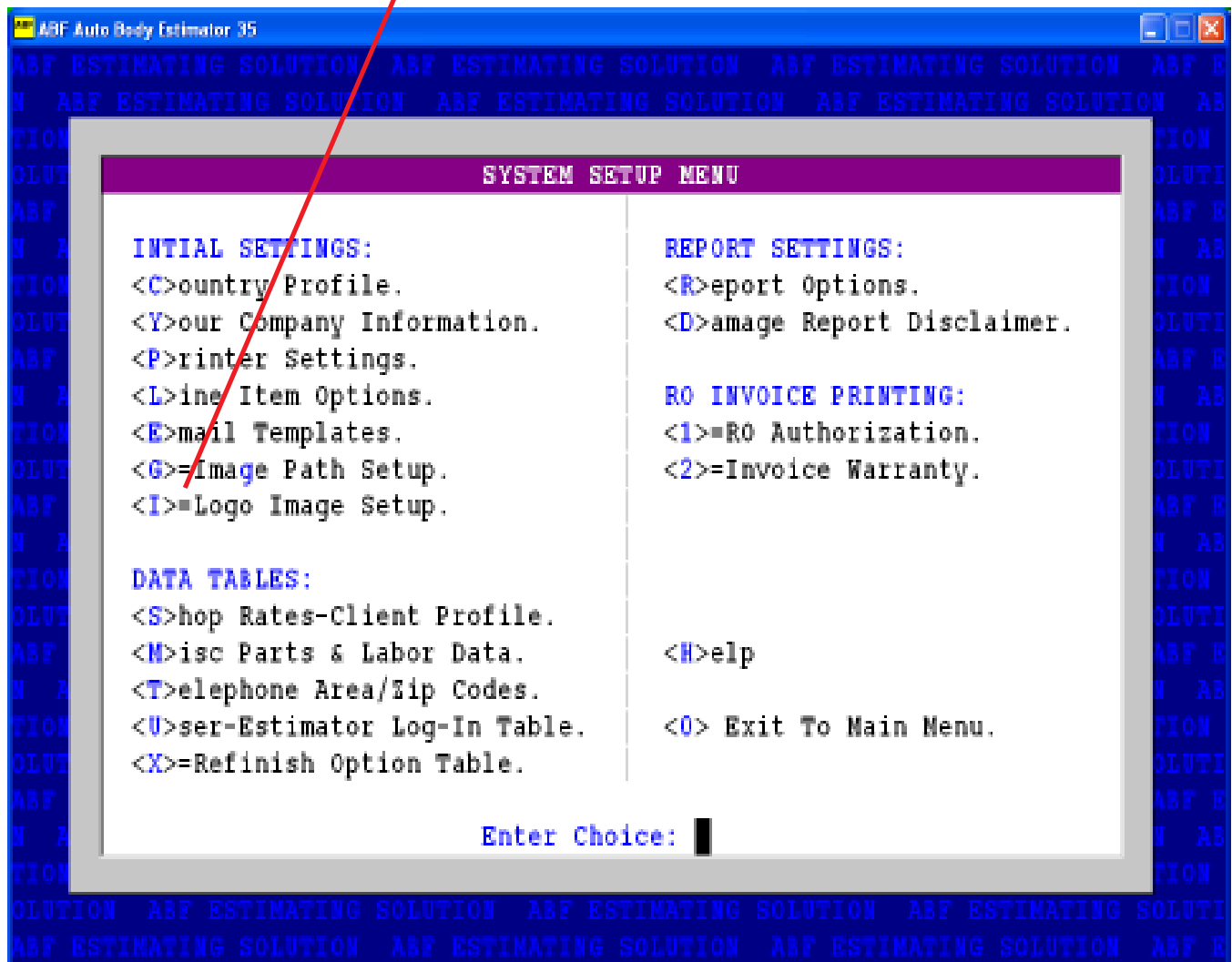


## Logo Image Setup

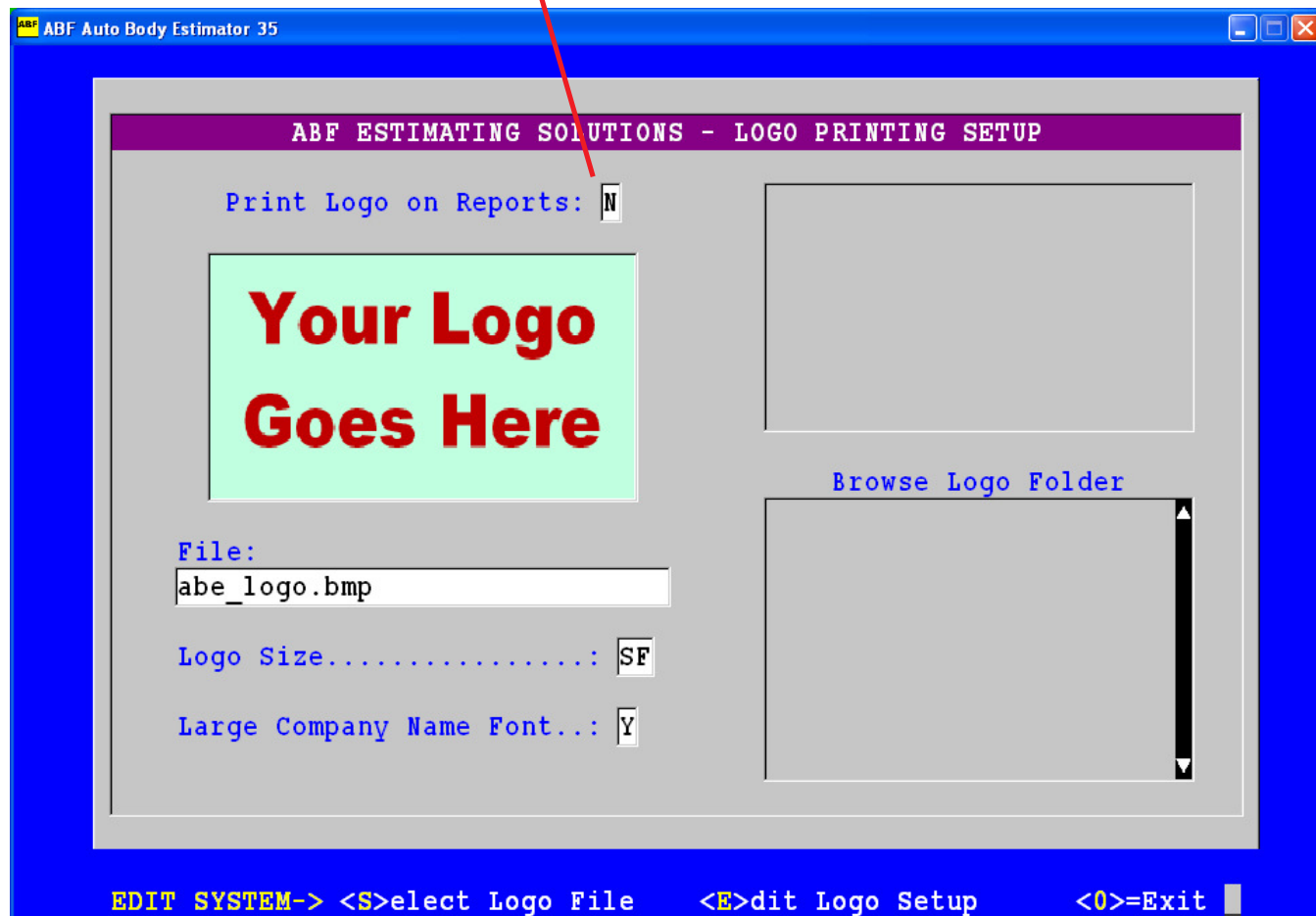
- 1) From the Main Menu, Press the "S" Key for Setup.
- 2) At the Setup Menu (Shown Below), Press the "I" Key for Logo Image Setup.



## Setting the "Print Logo Flag"

3) Now press the "E" Key to **Edit** your Logo Setup. Use the "N" Key for **NO** and the "Y" Key for **YES**.

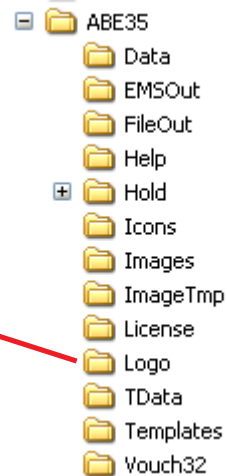
If you do not use a logo or do not want it printed out on your Damage Report, you must change the Logo Flag to "N" for No. Otherwise, press the "Y" Key to Print your logo.



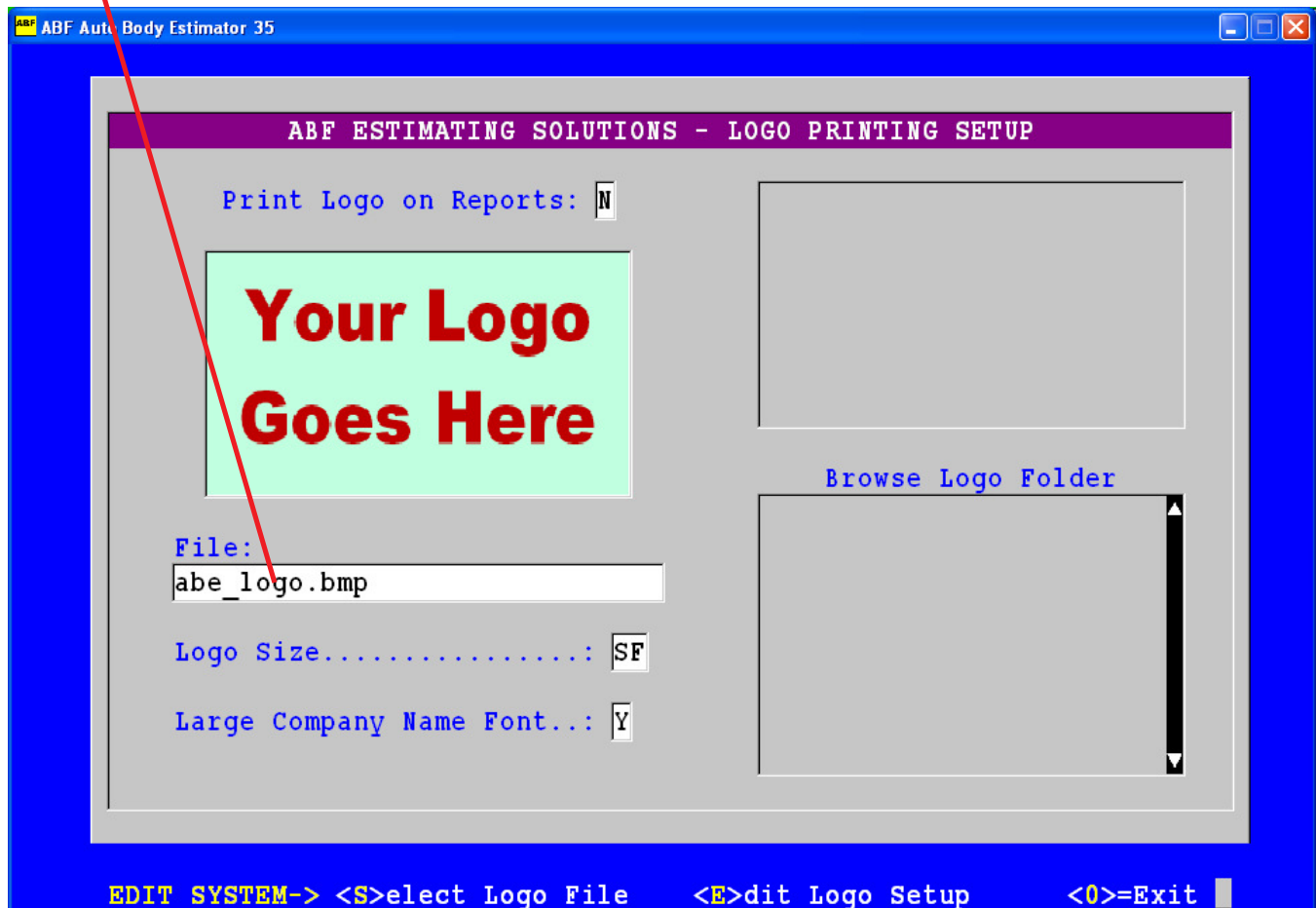
## Custom Logo Setup

4) Now you will be prompted to Enter or Edit your Logo Image File name. It can be a Bitmap(.bmp) or JPEG (.jpg) file. Be sure you copy the file into the Logo Sub-Folder.

Copy your Logo Image File  
Here: C:\ABE35\Logo\

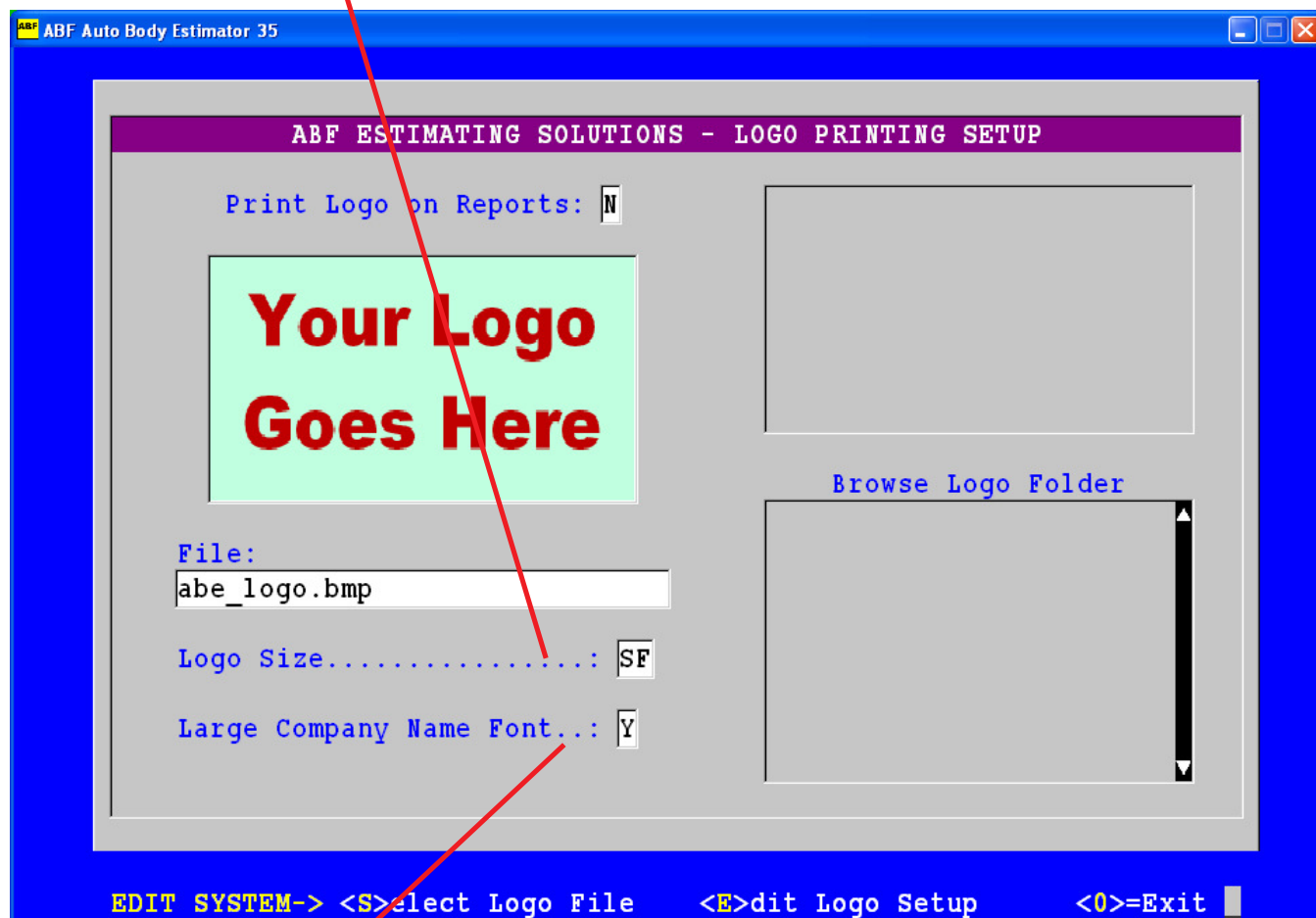


Be sure to enter the exact file name here.



## Custom Logo Size & Company Name Font

5) Now Select the Image Size.



6) Now you will be prompted to Select your Company Name Font Size. Press the "Y" Key to for Normal Size Font or "N" Key for a reduced size font (Select N if your Logo contains your business name).

7) Return to the Main Menu and you are ready to Print Damage Reports.