

MICROBIO.-PHARMACY T.I

NORTHBAY MEDICAL CENTER

1200 B. GALE WILSON BLVD.

FAIRFIELD CA 94533

FIRE ALARM SYSTEM

ALARM SERVICE CONTRACTOR: EQUIPMENT PROVIDER:

EDWARDS SYSTEMS TECHNOLOGY
5666 LA RIBERA STREET, SUITE E
LIVERMORE, CALIFORNIA 94550
CONTRACTOR # 890931
UL # S3204

CarterBrothers Fire & Life Safety

A Division of Carter Brothers, Inc.

5666 LA RIBERA STREET, SUITE A
LIVERMORE, CALIFORNIA 94550
TEL. (925) 371-3100 FAX (925) 245-1298

MONITORING INFORMATION

ZONE	PROTECTED PREMISES
1	ALARM
2	TROUBLE

CALIF. SECURITY ALARMS
1009 S. CLAREMOUNT ST.
SAN MATEO, CALIF.
94402
UL# 244872-003

CIRCUIT INFORMATION

CLASS	STYLE	DESCRIPTION
B	Y	POWER LIMITED AUDIO AND VISUAL CIRCUIT
B	4	POWER LIMITED ADDRESSABLE DEVICES DATA CIRCUIT

ALL CIRCUIT POWER SUPPLIES ARE POWER LIMITED

BUILDING INFORMATION

BUILDING HAS FIRE SPRINKLER PROTECTION

OCCUPANCY CLASSIFICATION: I-1.1 HOSPITAL
BUILDING CONSTRUCTION TYPE: TYPE V -1 HR
BUILDING HEIGHT: ONE FLOOR

SHEET INDEX

FA-0 COVER SHEET
FA-1 INSTALLATION INFORMATION
FA-2 CALCULATIONS & RISER DIAGRAM
FA-3 DEVICE DETAILS
FA-4.1 FLOOR PLAN
FA-4.2 ROOF PLAN

SCOPE OF WORK

INSTALL NEW DEVICES TO BRING AREA OF WORK UP TO CURRENT
FIRE CODE PER NFPA-72, CBC, NEC, OSHPD AND LOCAL CODES
FIRE ALARM DEVICES SHALL BE ADDED TO AN EXISTING FIRE ALARM
SYSTEM.

- INSTALLATION OF (12) NEW GENESIS SERIES SPEAKER STROBES.
- INSTALLATION OF (2) NEW 405 SERIES STROBES.
- INSTALLATION OF (4) NEW SIGA-IPHS SMOKE DETECTORS.
- INSTALLATION OF (6) NEW SIGA-CR CONTROL RELAY.
- INSTALLATION OF (4) NEW SIGA-PS SMOKE DETECTORS.
- INSTALLATION OF (4) NEW SIGA-DH DUCT DETECTOR HOUSING.

OSHPD CHECKLIST

OSHPD FIRE ALARM PLAN CHECK REQUIREMENTS

- SCOPE OF PROJECT. (SEE FA-0)
- FLOOR PLAN SHOWING FIRE ALARM DEVICES. (SEE FA-4)
- SINGLE LINE RISER DIAGRAM. (SEE FA-2)
- POINT TO POINT DIAGRAM. (SEE FA-2)
- CSFM LISTINGS SHEET SHOWING EXPIRATION DATE FOR COMPONENTS. (SEE SUBMITTAL BOOKS)
- MANUFACTURES' SPECIFICATION SHEET ON ALL FIRE ALARM EQUIPMENT (SEE SUBMITTAL BOOKS)
- OSHPD PROJECT NUMBER. (ALL SHEETS) (NOT ASSIGNED)
- BATTERY CALCULATIONS. (SEE FA-2)
- VOLTAGE DROP CALCULATIONS (SEE FA-2)
- SYMBOL OF ALL FIRE ALARM DEVICES BEING INSTALLED. (SEE FA-0)
- ELEVATION DETAIL OF MANUAL PULL STATION AND VISUAL DEVICES. (SEE FA-1)
- LOCATION OF FIRE / SMOKE BARRIER WALLS ON FLOOR PLAN. (SEE TO FA-4)
- IDENTIFICATION OF TYPE OF WIRING USED (SEE-FA-4)
- DESIGN NUMBER AND DETAIL OF THROUGH PENETRATION FIRE STOP SYSTEM (FA-1)
- FLOOR PLAN SHOWING ROOM IDENTIFICATION. (SEE FA-4)
- DETAILS ON SUPPORT AND ANCHORAGE OF FIRE ALARM EQUIPMENT WEIGHING OVER 20 POUNDS. NEW BOOSTER PANEL WEIGHT IS LESS THAN 20 LBS.
- SEQUENCE OF OPERATION / EVENTS WHEN ALARM SYSTEM IS ACTIVATED. (SEE FA-0)

SEQUENCE OF OPERATION

		OUTPUT												MONITOR
		ANNUNCIATE ALARM AT FAC	ANNUNCIATE TROUBLE AT FAC	ANNUNCIATE SUPERVISORY CONDITION AT FAC	ANNUNCIATE PATIENT ROOM SMOKE ALARM AT FAC	ANNUNCIATE PATIENT ROOM SMOKE ALARM AT FAC	ANNUNCIATE PATIENT ROOM SMOKE ALARM AT FAC	ANNUNCIATE PATIENT ROOM SMOKE ALARM AT FAC	ANNUNCIATE PATIENT ROOM SMOKE ALARM AT FAC	ANNUNCIATE PATIENT ROOM SMOKE ALARM AT FAC	ANNUNCIATE PATIENT ROOM SMOKE ALARM AT FAC	ANNUNCIATE PATIENT ROOM SMOKE ALARM AT FAC	ANNUNCIATE PATIENT ROOM SMOKE ALARM AT FAC	
ALARM SIGNALS	AREA SMOKE / HEAT DETECTOR	X												X
	FIRE ALARM MANUAL PULL STATION	X												X
	WATER FLOW SWITCH	X												X
	DUCT DETECTOR	X												X
SUPERVISORY SIGNALS	VALVE SUPERVISORY TAMPER SWITCH			X										X
	POST INDICATOR VALVE			X										X
TROUBLE SIGNAL	SYSTEM TROUBLE		X											X
	AC POWER FAILURE		X											X
	BACK UP BATTERY FAILURE		X											X
	DEVICES OR CIRCUIT TROUBLE		X											X
	REMOTE BOOSTER POWER SUPPLY TROUBLE		X											X

GENERAL NOTES

- All requirements of contract specifications and drawings apply.
- Installation shall conform to all requirements of applicable electrical codes.
- Wiring methods and materials shall conform with all applicable sections of CEC Article 760.
- See EST Field Wiring Specifications for additional installation requirements.
- 120VAC 60 Hz input power for fire alarm controls shall be a dedicated, locking breaker properly labeled "FACP". Label shall be red.
- All wiring, including shields, must be dry and free of shorts and grounds.
- Provide EST with one copy of "as built" drawings so that accurate documentation can be maintained.
- 120VAC is not permitted in same conduit with low voltage wiring.
- Do not apply power except in the presence of a factory trained EST technical representative.
- Any smoke detector head installed before building is cleaned and accepted shall be covered to protect from dust. Any false alarms due to dirt-contaminated heads shall be the responsibility of the electrical contractor.
- There will be no conduit entry allowed 18" or lower on the side panels or through the bottom of all control equipment backboxes.
- Conduit and junction boxes are diagrammatic only. Exact location may vary due to field conditions. Actual installation locations shall be determined by the installer contractor.
- Signaling circuit wire runs are critical. Any increase in length of wire may effect circuit configuration.
- Do not locate smoke detectors within 3 feet of supply air vents.
- OSHPD Fire Marshal shall witness final test.
- The Fire Alarm System shall conform to Article 760 of the California Electrical Code. Include 2007 edition of NFPA72 and California amendments.
- Upon completion of the installation of the Fire Alarm System, a satisfactory test of the entire system shall be made in the presence of the O.S.H.P.D. Fire Marshal.
- A minimum of 48 hours notice shall be required for any inspection and/or testing.
- All devices of the Fire Alarm System shall be approved and listed by the California State Fire Marshal.
- A stamped set of approved Fire Alarm Plans shall be on the job site and used for installation. Any deviation from approved plans, including the substitution of devices, shall be approved by the O.S.H.P.D. Fire Marshal.
- Any discrepancies between the drawings and the code or recognized standards shall be brought to the attention of the inspector of record.
- A certificate of compliance shall be prepared by the installer and given to the O.S.H.P.D. Fire Marshal upon completion of the installation.

SYMBOLS LIST

SYMBOL	QTY NEW	QTY (E)	EDWARDS CATALOG #	DESCRIPTION	CSFM#
(E) FACP	1	1	IRC-3	EXISTING FIRE CONTROL PANEL	7165-1657:147
BPS	2	2	BPS6A	BOOSTER POWER SUPPLY	7300-1657:229
ANN	1	1	LSRA	ANNUNCIATOR	7120-1657:196
2	4	4	SIGA-IPHS	4D SMOKE DETECTOR	7272-1657:123
1	3	3	SIGA-SB	STANDARD BASE	7300-1657:120
1	3	3	SIGA-HRS	4D SMOKE DETECTOR	7270-1657:125
1	3	3	SIGA-SB	STANDARD BASE	7300-1657:120
1	4	4	SIGA-DH	DUCT DETECTOR HOUSING	3240-1657:108
1	4	4	SIGA-PS	PHOTOELECTRIC DETECTOR	7272-1657:126
1	4	4	SIGA-SB	STANDARD BASE	7300-1657:120
1	2	2	RUSKIN FSD60	PROVIDED BY OTHERS	--
1	1	1	CC-S7VM	CEILING SPKR/STRBE	7320-1657:211
1	12	12	G4-S7VM	WALL SPKR/STRBE	7320-1657:211
1	5	5	405-7A-T	WALL STROBE	7125-1657:184
1	2	2	757-1A-SS70	SPEAKER	7125-1657:183
1	3	3	SIGA-CR	RELAY MODULE	7300-1657:121
1	1	1	SIGA-CC15	AUTO SYNC OUTPUT MODULE	7300-1657:121
1	1	1	BY OTHERS	JUNCTION BOX	--
1	1	1	BY OTHERS	EXISTING WATER FLOW SWITCH	--
1	1	1	BY OTHERS	EXISTING TAMPER SWITCH	--
1	1	1	BY OTHERS	END OF LINE RESISTOR	--

- NOTE:
- STROBES ARE SYNCHRONIZED.
 - THESE DEVICES ARE NEW UNLESS OTHERWISE SPECIFIED.
 - CSFM LISTINGS PROVIDED WITH PRODUCT DATA SHEETS.

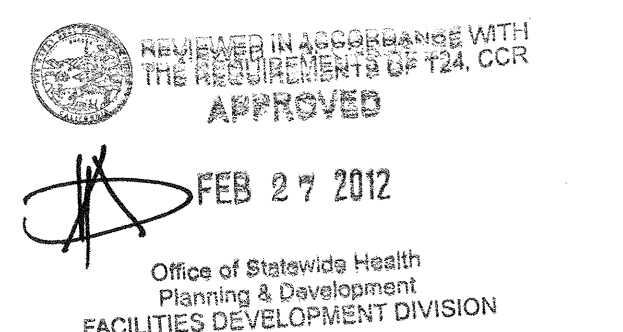
WRNSSTUDIO, LP

601 SECOND STREET
4TH FLOOR, STE. 402
SAN FRANCISCO
CALIFORNIA 94107
415.489.2224 TEL
415.358.9100 FAX
WWW.WRNSSTUDIO.COM

**CarterBrothers
Fire & Life Safety**

5666 LA RIBERA STREET, SUITE A
LIVERMORE, CALIFORNIA 94550
TEL. (925) 371-3100
FAX (925) 245-1298

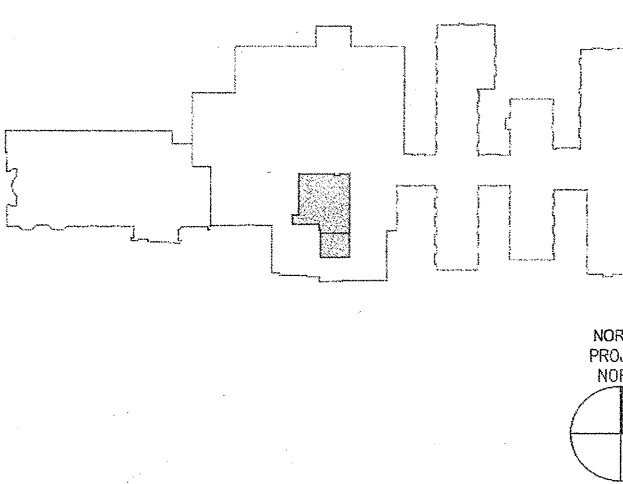
NO. ISSUES/REVISIONS
100% CRITERIA DESIGN 06/07/2011
50% DETAILED DESIGN 12/02/2011
100% DETAILED DESIGN 12/21/2011
50% IMPLEMENTATION DOCUMENTS 01/14/2012
100% IMPLEMENTATION DOCUMENTS 02/22/2012
OSHPD 1ST ROUND BACKCHECK 07/08/2012
OSHPD 2ND ROUND BACKCHECK 10/26/2012



**NORTH BAY™
HEALTHCARE**

NORTHBAY MEDICAL CENTER
PHARMACY/MICROBIOLOGY
RENOVATION

KEY PLAN



PROJECT NO.: 09017.02 DRAWN BY: K.C.
DATE: 12/15/2010 CHECKED BY:
SCALE: NA

SHEET TITLE:

COVER SHEET

FA-O

SHEET NO:

All drawings and written material appearing herein constitute original and unpublished work of the Architect/Engineer and may not be duplicated, used or disclosed without consent of Architect/Engineer.

If this drawing is not 30"x42", then the drawing has been revised from its original size. Noted scales must be adjusted. This line should be equal to one inch.