

1

ROOFSCREEN SPECIFICATIONS:

- P PANEL: 7.2 RIB, 24 GA., ORIENT HORIZONTAL, FASTEN TO VERTICAL TUBE W/ #12-14 X 1" LONG T/3 TH SCREW - ROOFSCREEN P/N "S16" AT 7.2" OC AND AT EACH DOWN FLUTE AND PER MANF SPECS.

TUBE STEEL: ASTM A500

- T10** HSS 2.500 OD X .065 (16 GA), FY=40 ksi

PROPRIETARY CONNECTORS: ASTM A1008. WELDING SHALL BE DONE BY WELDERS CERTIFIED FOR THE WELDS TO BE MADE USING E70XX ELECTRODES IN CONFORMANCE WITH THE REQUIREMENTS OF AISC SPECS AND CODE OF STANDARD PRACTICE AND AWS D1.1. SEE FABRICATION DRAWINGS BELOW.

- | | |
|------|--|
| C8 | CRIMPED END: (ALTERNATE TO END CONNECTOR)
CONN TO FIELD CONN W/ $\frac{1}{2}$ " DIA ANIS 18-8 STAINLESS STEEL BOLT. |
| C28 | END CONNECTOR:
CONN TO TUBE W/ #12-14 X 1" LONG T/3 TEK® SCREWS- ROOFSCREEN P/N "S10". (2) EA SIDE TYP.
(4) TOTAL. |
| C12 | FIELD CONNECTOR:
CONN TO BASE CONN (OR FIELD CONN) W/ $\frac{1}{2}$ " DIA ANIS 18-8 STAINLESS STEEL BOLT. |
| C11 | FIELD CONNECTOR:
CONN TO TUBE W/ #12-14 X 1" LONG T/3 TEK® SCREWS- ROOFSCREEN P/N "S10". (2) EA SIDE TYP.
(4) TOTAL. |
| C11 | BASE CONNECTOR:
CONN TO TUBE W/ #12-14 X 1" LONG T/3 TEK® SCREWS- ROOFSCREEN P/N "S10". (2) EA SIDE TYP.
(4) TOTAL. CLAMP TIGHT W/ $\frac{1}{8}$ " DIA ANIS 18-8 STAINLESS STEEL BOLT. (2) TOTAL. |
| C10 | BASE CAP:
CONN TO BASE CONNECTOR $\frac{1}{2}$ " DIA GALVANIZED A325 BOLT W/ LOAD INDICATING WASHER.
CONN TO BASE SUPPORT $\frac{1}{2}$ " DIA ANIS 18-8 STAINLESS STEEL BOLT- ROOFSCREEN P/N "B11". (8) TOTAL. |
| BS11 | BASE SUPPORT: 9" HIGH
ALIGN BASE SUPPORT OVER NEW BLOCKING OR EXISTING FRAMING BELOW. SEE MIN BLOCKING OR EXISTING FRAMING REQUIREMENTS BELOW. CUSTOMER TO SUPPLY NEW BLOCKING WHEN SUPPORT IS NOT LOCATED DIRECTLY OVER EXISTING FRAMING OF SUFFICIENT THICKNESS OR QUALITY. |
| BLK | BLOCKING:
MIN 4X10 NEW BLOCKING OR EXISTING FRAMING MEMBER, DOUGLAS FIR #2 OR BETTER. DESIGN AND SUPPLY OF BLOCKING AND BLOCKING CONNECTION TO EXISTING FRAMING SHALL BE PROVIDED BY CUSTOMER. |
| ATCH | ROOF ATTACHMENT:
CONN BASE SUPPORT TO BLOCKING OR EXISTING FRAMING WITH 3/8" X 6" LAG SCREWS & ROOFSCREEN P/N "U14". (2) TOTAL PER BASE SUPPORT. SEE FRAME DETAIL FOR CONNECTOR EDGE DISTANCE AND END DISTANCE REQUIREMENTS. |

ROOFSCREEN BASE REACTIONS:

EVALUATION OF THE ROOF SHEATHING, BLOCKING, BLOCKING CONNECTION, ROOF FRAMING, AND BUILDING FOR NEW MECHANICAL EQUIPMENT AND SCREEN LOADS SHALL BE PERFORMED BY OTHERS. ANALYSIS SHALL BE DONE BY A LICENSED PROFESSIONAL ENGINEER. ROOFSCREEN BASE REACTIONS PROVIDED ARE BASED ON THE DESIGN CRITERIA ON SHEET RS-0. THE MAXIMUM SERVICE REACTIONS AT THE BASES ARE AS FOLLOWS:

WIND

- N1 Rx = +/- 145 lbs AND (Ry = -322 lbs TENSION OR Ry = 320 lbs COMPRESSION)

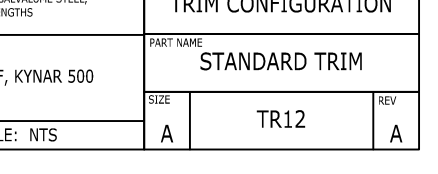
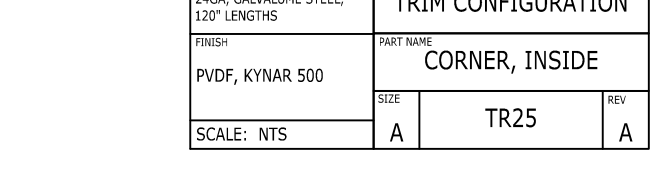
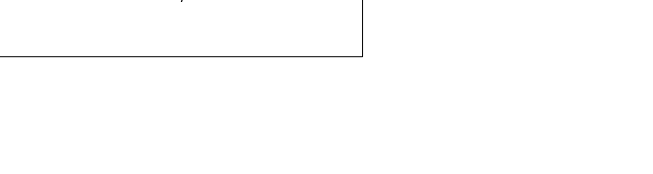
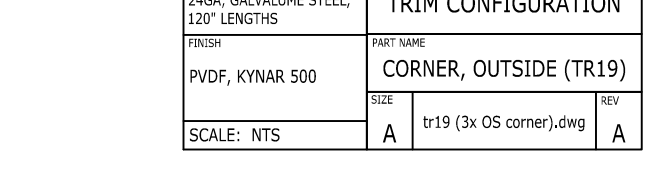
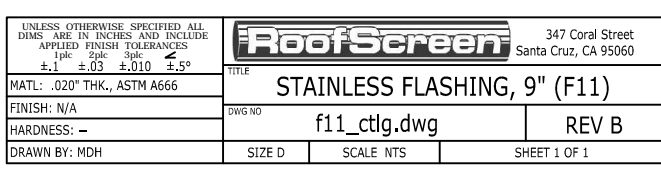
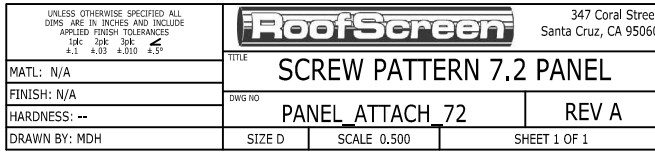
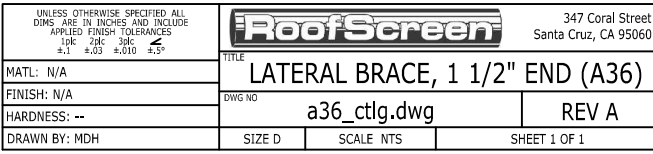
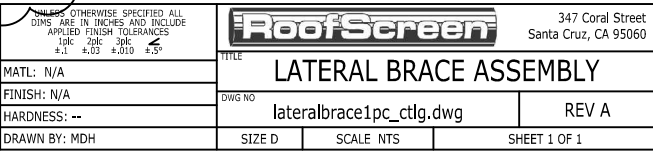
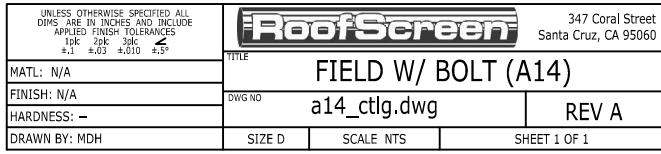
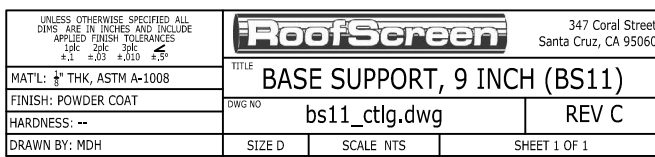
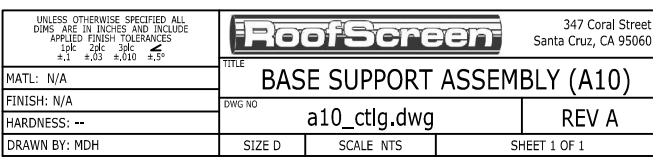
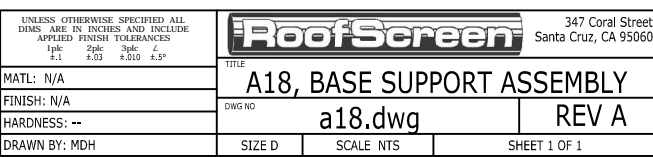
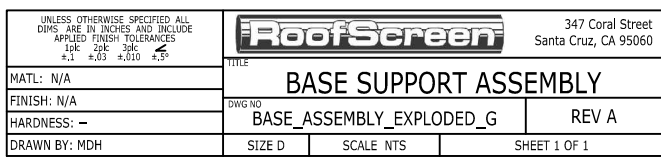
DEAD:

- N1 Ry = 78 lbs COMPRESSION
- N2 Ry = 0 lbs COMPRESSION

R EXISTING ROOF FRAMING: 1/2" PLYWOOD OVER 2X10 AT 12" OC. (FIELD VERIFY 1/2" PLYWOOD THICKNESS.)

MAXIMUM HEIGHT REFERS TO MAXIMUM HEIGHT ABOVE AVERAGE LEVEL OF ADJOINING GROUND ADJACENT TO THE BUILDINGS.

ALL OTHER ARRANGEMENTS REQUIRE ENGINEER'S APPROVAL



REV.	DESCRIPTION	BY	DATE
1	CONSTRUCTION DOCUMENTS	JAB	05/11/11
2	OSHPD 2ND ROUND BACKCHECK	JAB	10/24/11
3			
4			

Jennifer Bennett P.E.
120 Redwood St
Santa Cruz, CA 95060
(831) 420-0529
jbennettpe@gmail.com



NORTHBAY MEDICAL CENTER PHARMACY
1800 PENNSYLVANIA AVE., FAIRFIELD, CA 94533



RoofCorporation

ROOFSCREEN FRAME DETAILS, PARTS AND ASSEMBLIES

DRAWN BY: JA

CHECKED BY: JA

JOB NUM: 1013/RMI # 207

ARS-103

ARS-103