

NO. ISSUES/REVISIONS DATE
 OSHPD SUBMITTAL 03/03/10
 SOLENO CO. DRW SUBMITTAL 09/10/10
 OSHPD 2ND ROUND BACKCHECK RESPONSES 10/29/10
 OSHPD 3RD ROUND BACKCHECK RESPONSES 04/29/11

APPROVED
 Fixed Equipment Anchorage
 OPA-0485 November 14, 2002
 Valid for 3 Years Maximum

I. S. A. T.
 International Seismic Application Technology
 6000 Arroyo Boulevard, Suite 100, CA 94020
 877-899-4728 (T.S.) 714-964-6333 714-523-0445 (FAX)
 www.isat.com

Original
 Nov-02
 Page B1.3

APPROVED
 Fixed Equipment Anchorage
 OPA-0485 November 14, 2002
 Valid for 3 Years Maximum

I. S. A. T.
 International Seismic Application Technology
 6000 Arroyo Boulevard, Suite 100, CA 94020
 877-899-4728 (T.S.) 714-964-6333 714-523-0445 (FAX)
 www.isat.com

Original
 Nov-02
 Page B1.3

APPROVED
 Fixed Equipment Anchorage
 OPA-0485 November 14, 2002
 Valid for 3 Years Maximum

I. S. A. T.
 International Seismic Application Technology
 6000 Arroyo Boulevard, Suite 100, CA 94020
 877-899-4728 (T.S.) 714-964-6333 714-523-0445 (FAX)
 www.isat.com

Original
 Nov-02
 Page B2.3

APPROVED
 Fixed Equipment Anchorage
 OPA-0485 November 14, 2002
 Valid for 3 Years Maximum

I. S. A. T.
 International Seismic Application Technology
 6000 Arroyo Boulevard, Suite 100, CA 94020
 877-899-4728 (T.S.) 714-964-6333 714-523-0445 (FAX)
 www.isat.com

Original
 Nov-02
 Page B2.3.1

APPROVED
 Fixed Equipment Anchorage
 OPA-0485 November 14, 2002
 Valid for 3 Years Maximum

I. S. A. T.
 International Seismic Application Technology
 6000 Arroyo Boulevard, Suite 100, CA 94020
 877-899-4728 (T.S.) 714-964-6333 714-523-0445 (FAX)
 www.isat.com

Original
 Nov-02
 Page B4.6

APPROVED
 Fixed Equipment Anchorage
 OPA-0485 November 14, 2002
 Valid for 3 Years Maximum

I. S. A. T.
 International Seismic Application Technology
 6000 Arroyo Boulevard, Suite 100, CA 94020
 877-899-4728 (T.S.) 714-964-6333 714-523-0445 (FAX)
 www.isat.com

Original
 Nov-02
 Page B27.1

APPROVED
 Fixed Equipment Anchorage
 OPA-0485 November 14, 2002
 Valid for 3 Years Maximum

I. S. A. T.
 International Seismic Application Technology
 6000 Arroyo Boulevard, Suite 100, CA 94020
 877-899-4728 (T.S.) 714-964-6333 714-523-0445 (FAX)
 www.isat.com

Original
 Nov-02
 Page B27.2

APPROVED
 Fixed Equipment Anchorage
 OPA-0485 November 14, 2002
 Valid for 3 Years Maximum

I. S. A. T.
 International Seismic Application Technology
 6000 Arroyo Boulevard, Suite 100, CA 94020
 877-899-4728 (T.S.) 714-964-6333 714-523-0445 (FAX)
 www.isat.com

Original
 Nov-02
 Page B27.3

ATR Dia.	1/2" Max.	3/4" Max.	1" Max.	1 1/4" Max.	1 1/2" Max.
1/2"	0'	1'-1 1/2"	0'	1'-1 1/2"	1'-0"
3/4"	0'	1'-0"	0'	1'-0"	1'-0"
1"	0'	0'-6"	0'	0'-6"	0'-6"
1 1/4"	0'	0'-6"	0'	0'-6"	0'-6"
1 1/2"	0'	0'-6"	0'	0'-6"	0'-6"

APPROVED
 Fixed Equipment Anchorage
 OPA-0485
 WEDNESDAY, JUNE 13, 2007

I. S. A. T.
 International Seismic Application Technology
 6000 Arroyo Boulevard, Suite 100, CA 94020
 877-899-4728 (T.S.) 714-964-6333 714-523-0445 (FAX)
 www.isat.com

Original
 Nov-02
 Page B27.4

ATR Dia.	1/2" Max.	3/4" Max.	1" Max.	1 1/4" Max.	1 1/2" Max.
1/2"	0'	1'-1 1/2"	0'	1'-1 1/2"	1'-0"
3/4"	0'	1'-0"	0'	1'-0"	1'-0"
1"	0'	0'-6"	0'	0'-6"	0'-6"
1 1/4"	0'	0'-6"	0'	0'-6"	0'-6"
1 1/2"	0'	0'-6"	0'	0'-6"	0'-6"

APPROVED
 Fixed Equipment Anchorage
 OPA-0485
 WEDNESDAY, JUNE 13, 2007

I. S. A. T.
 International Seismic Application Technology
 6000 Arroyo Boulevard, Suite 100, CA 94020
 877-899-4728 (T.S.) 714-964-6333 714-523-0445 (FAX)
 www.isat.com

Original
 Nov-02
 Page B27.5

ATR Dia.	1/2" Max.	3/4" Max.	1" Max.	1 1/4" Max.	1 1/2" Max.
1/2"	0'	1'-1 1/2"	0'	1'-1 1/2"	1'-0"
3/4"	0'	1'-0"	0'	1'-0"	1'-0"
1"	0'	0'-6"	0'	0'-6"	0'-6"
1 1/4"	0'	0'-6"	0'	0'-6"	0'-6"
1 1/2"	0'	0'-6"	0'	0'-6"	0'-6"

APPROVED
 Fixed Equipment Anchorage
 OPA-0485
 WEDNESDAY, JUNE 13, 2007

I. S. A. T.
 International Seismic Application Technology
 6000 Arroyo Boulevard, Suite 100, CA 94020
 877-899-4728 (T.S.) 714-964-6333 714-523-0445 (FAX)
 www.isat.com

Original
 Nov-02
 Page B27.6

ATR Dia.	1/2" Max.	3/4" Max.	1" Max.	1 1/4" Max.	1 1/2" Max.
1/2"	0'	1'-1 1/2"	0'	1'-1 1/2"	1'-0"
3/4"	0'	1'-0"	0'	1'-0"	1'-0"
1"	0'	0'-6"	0'	0'-6"	0'-6"
1 1/4"	0'	0'-6"	0'	0'-6"	0'-6"
1 1/2"	0'	0'-6"	0'	0'-6"	0'-6"

APPROVED
 Fixed Equipment Anchorage
 OPA-0485
 TUESDAY, JUNE 12, 2007

I. S. A. T.
 International Seismic Application Technology
 6000 Arroyo Boulevard, Suite 100, CA 94020
 877-899-4728 (T.S.) 714-964-6333 714-523-0445 (FAX)
 www.isat.com

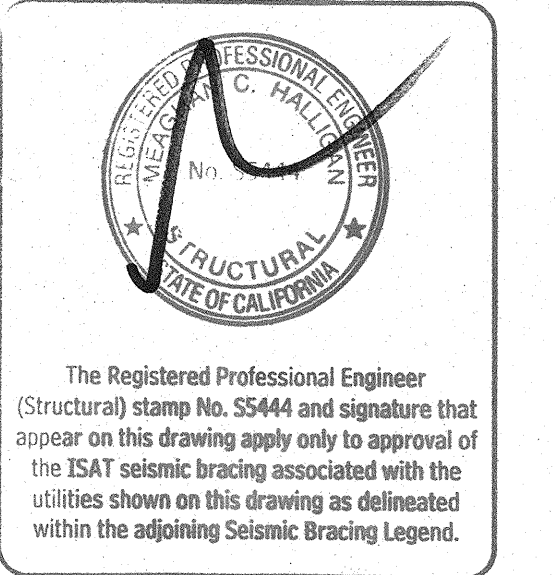
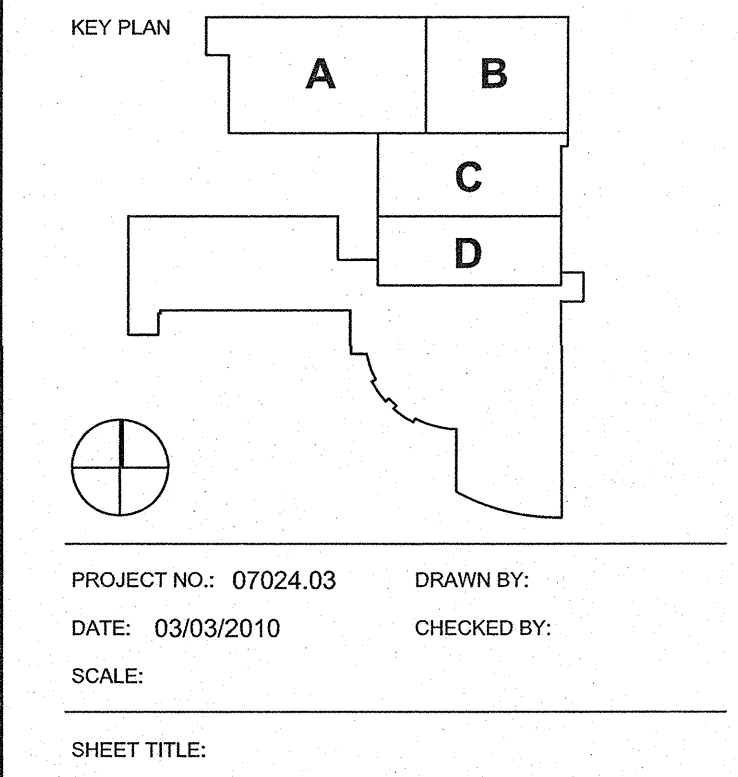
Original
 Nov-02
 Page B27.8

North Bay Healthcare
 THORNTON TOMASETTI, INC.
 NO EXCEPTIONS
 EXCEPTIONS NOTED
 REJECTED

THIS SUBMITTAL CONCERNS ITEMS NOT DESIGNED BY THE ENGINEER. REVIEW IS LIMITED TO ASSURING THAT THE SUBMITTAL COMPLIES WITH THE REQUIREMENTS OF THE LOCAL CODES AND THE DESIGN AND CONSTRUCTION OF THE PROJECT. THE ENGINEER'S REVIEW IS LIMITED TO THE TECHNICAL ASPECTS OF THE SUBMITTAL AND DOES NOT CONSTITUTE AN ENDORSEMENT OF THE SUBMITTAL OR A GUARANTEE OF THE ACCURACY OF THE INFORMATION PROVIDED. THE ENGINEER'S REVIEW IS LIMITED TO THE TECHNICAL ASPECTS OF THE SUBMITTAL AND DOES NOT CONSTITUTE AN ENDORSEMENT OF THE SUBMITTAL OR A GUARANTEE OF THE ACCURACY OF THE INFORMATION PROVIDED.

APR 28 2011

NORTH BAY HEALTHCARE
 VACAVALLEY HOSPITAL
 EXPANSION PROJECT
 PACKAGE 3
 OSHPD No. HS081331



SEISMIC DETAIL SHEET
SEISMIC BRACING MEP
B-SERIES-ALTERNATE
OPTIONAL DETAILS