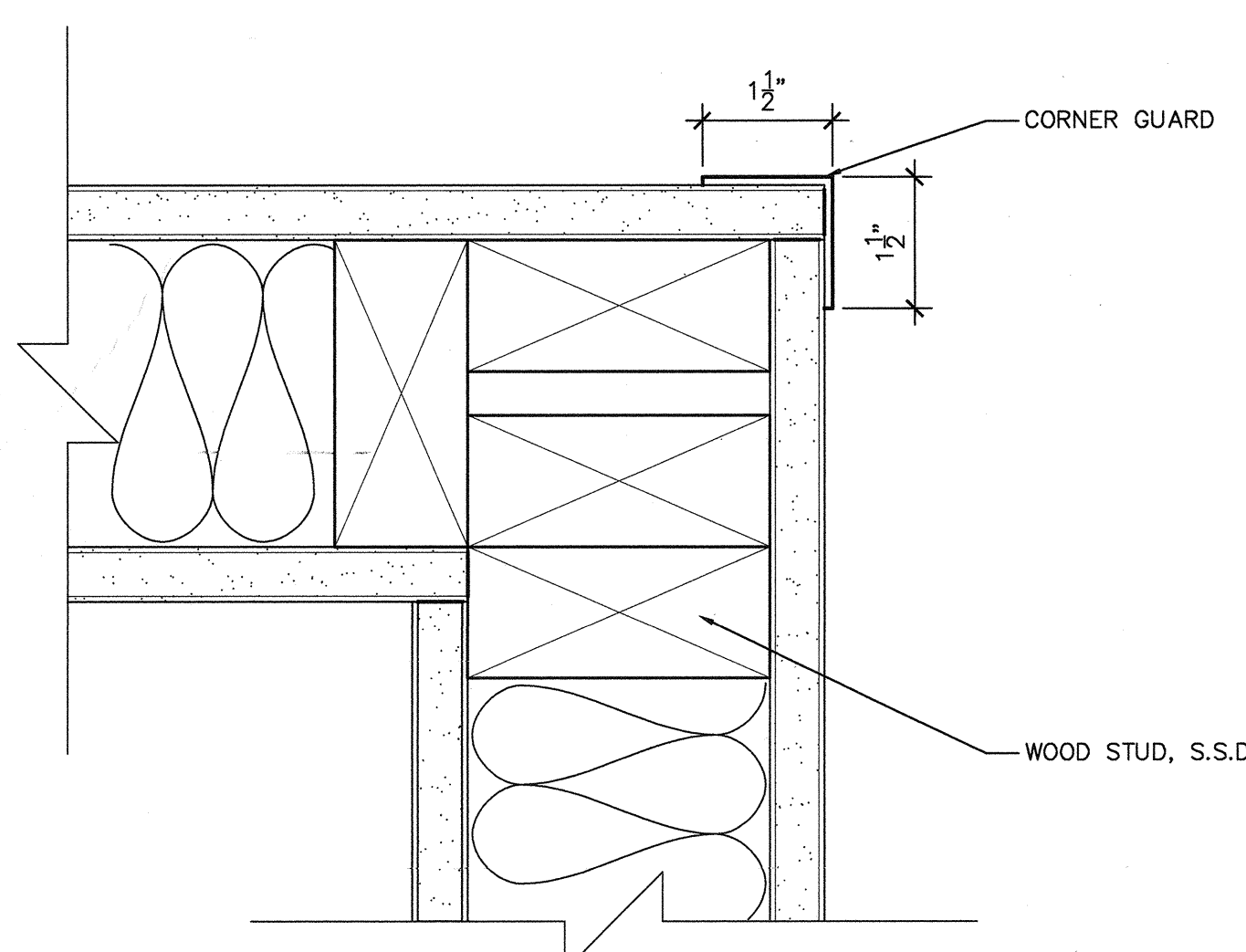
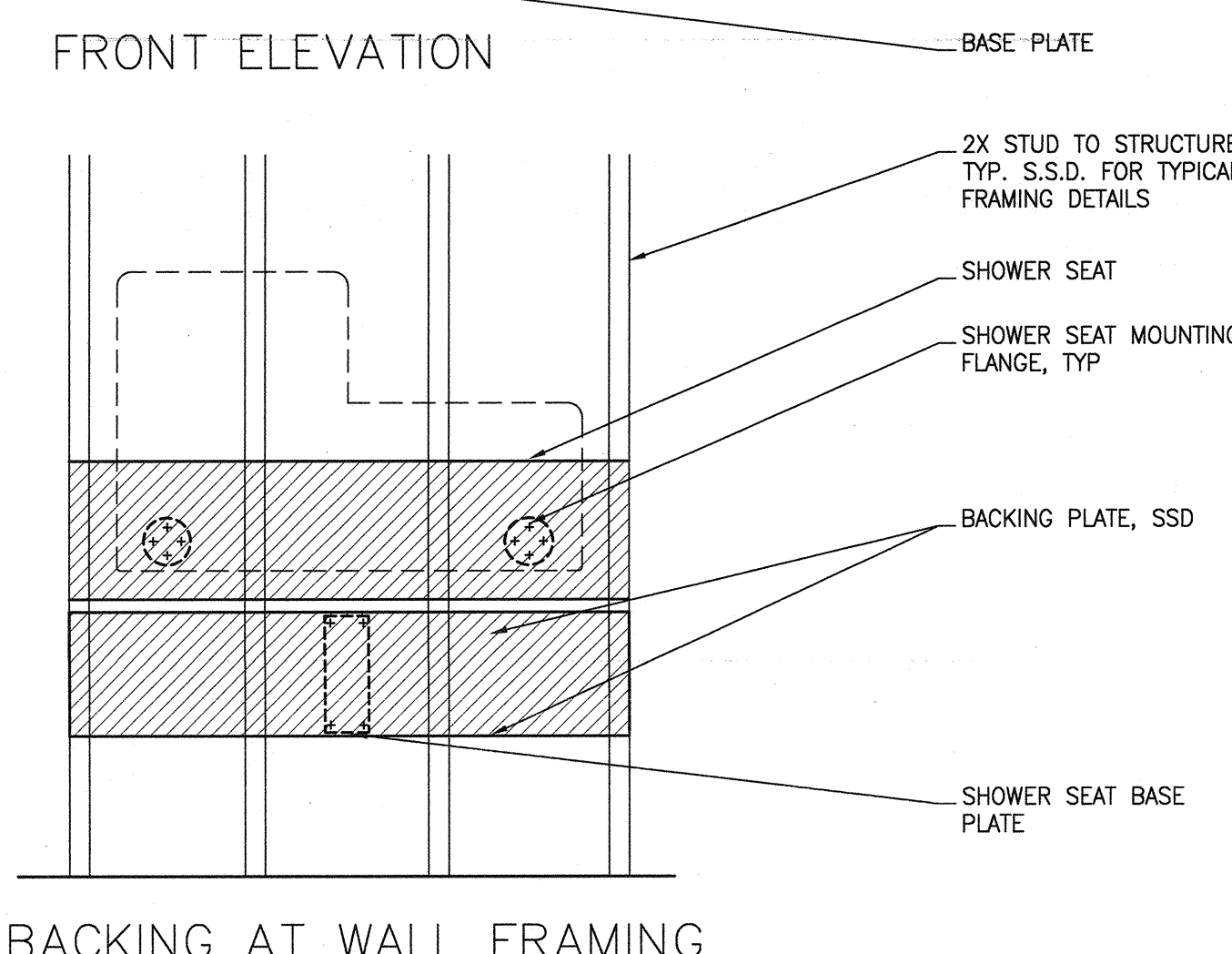
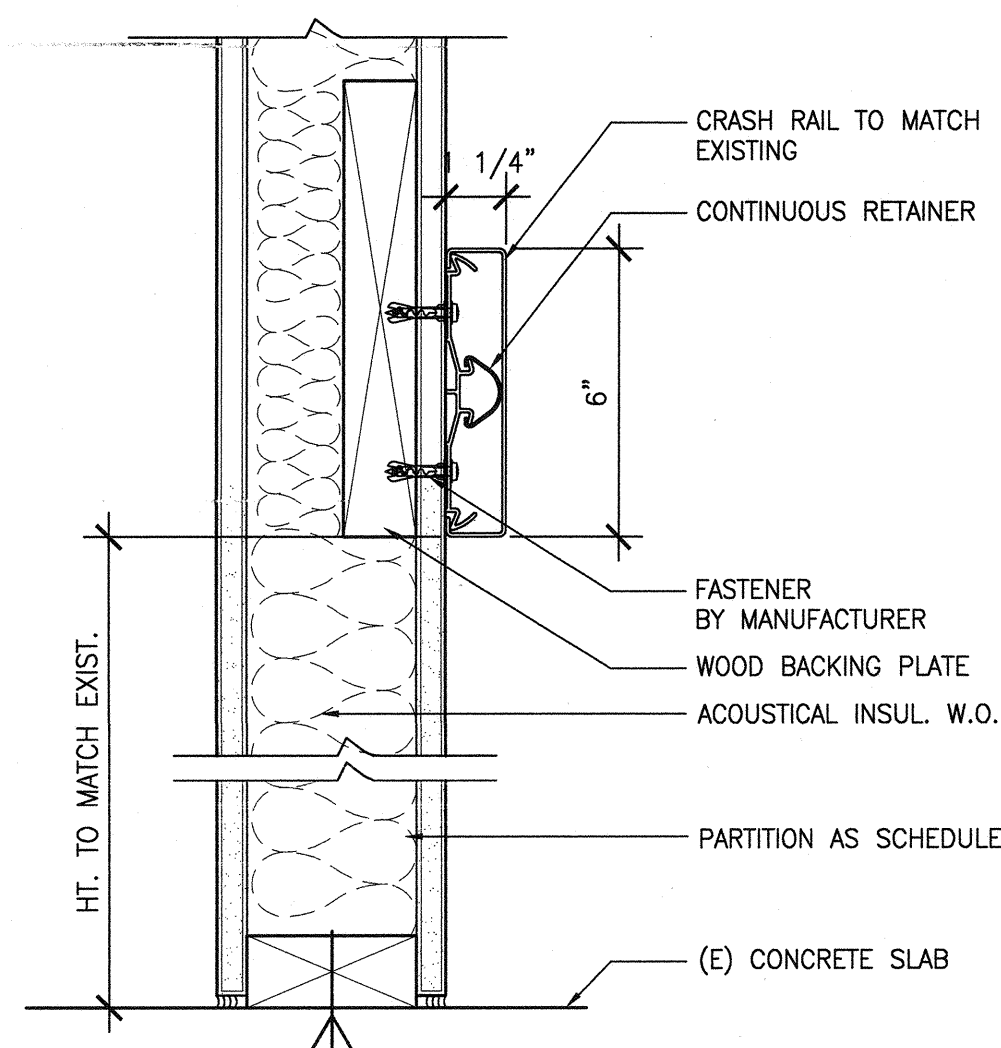
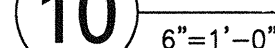
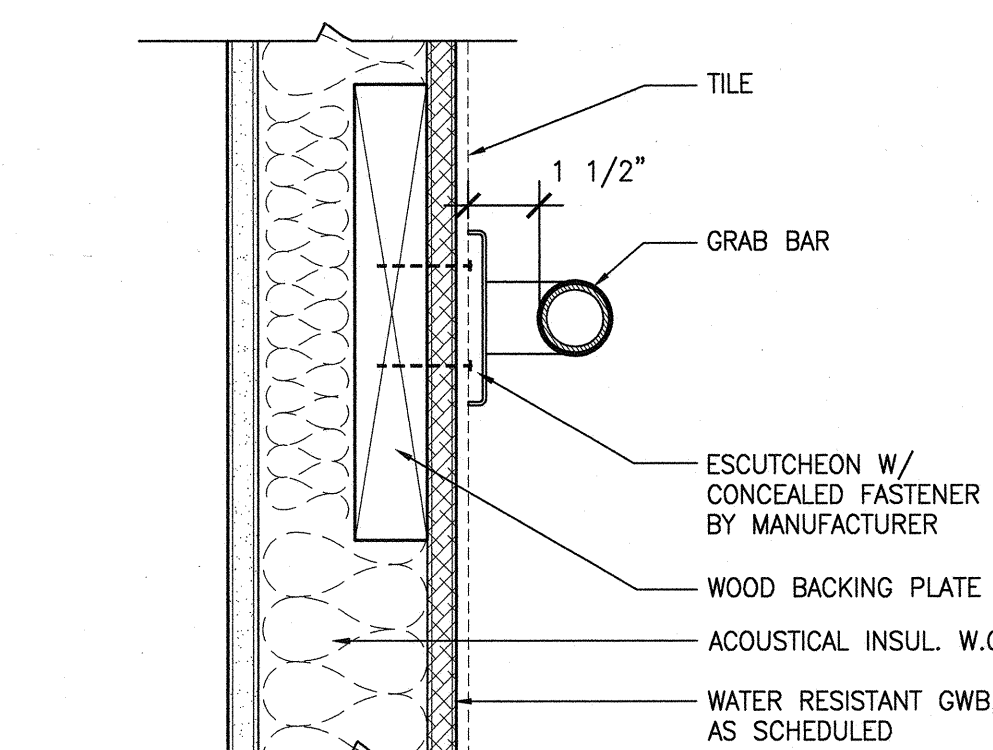


16 3" = 1'-0"

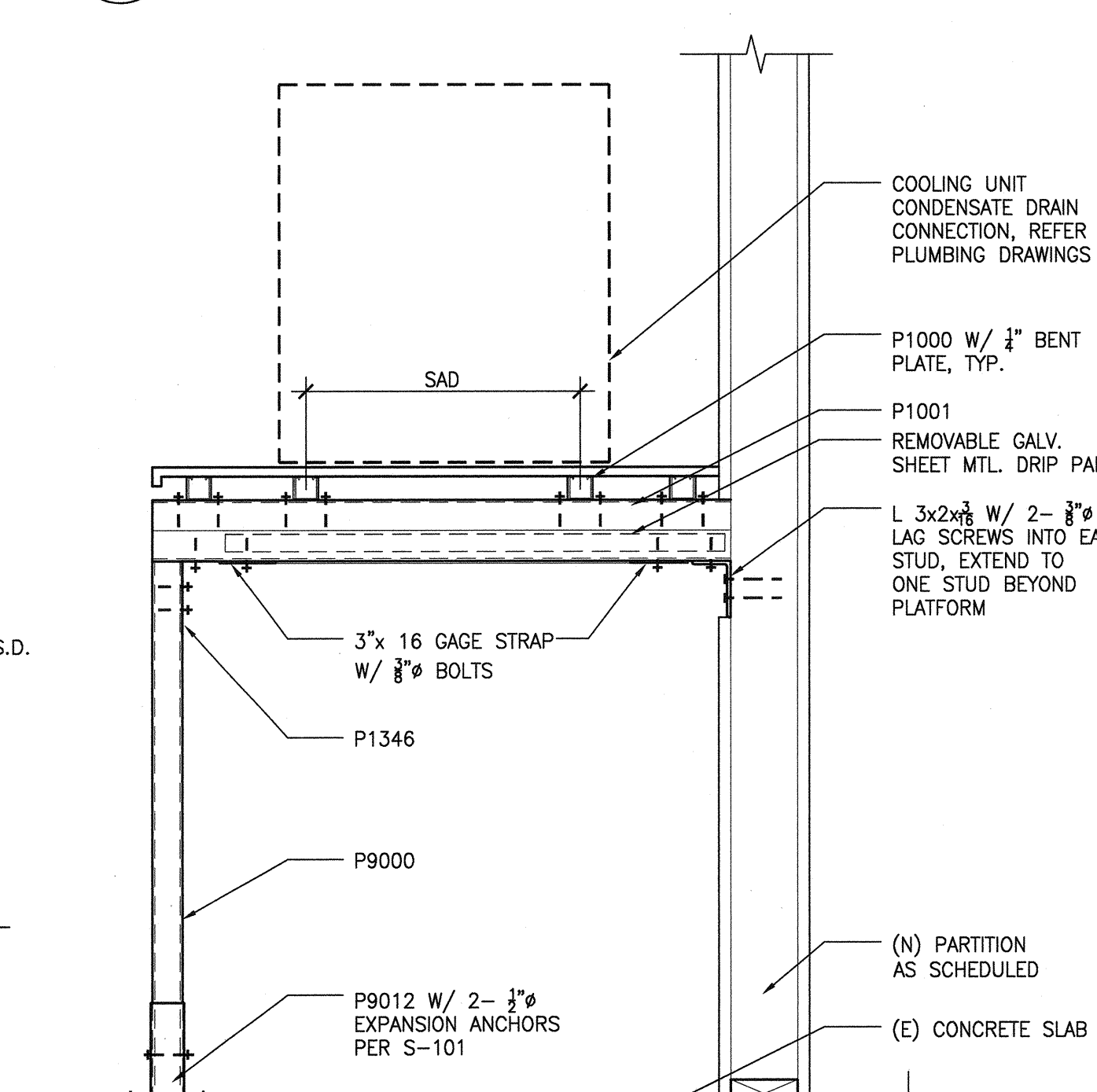
17 $6'' - 1' = 0$ 

20 NTS

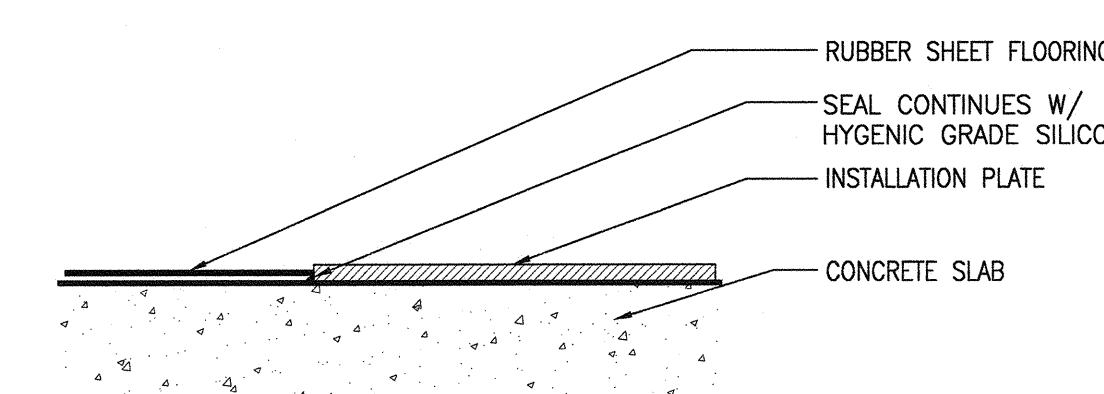
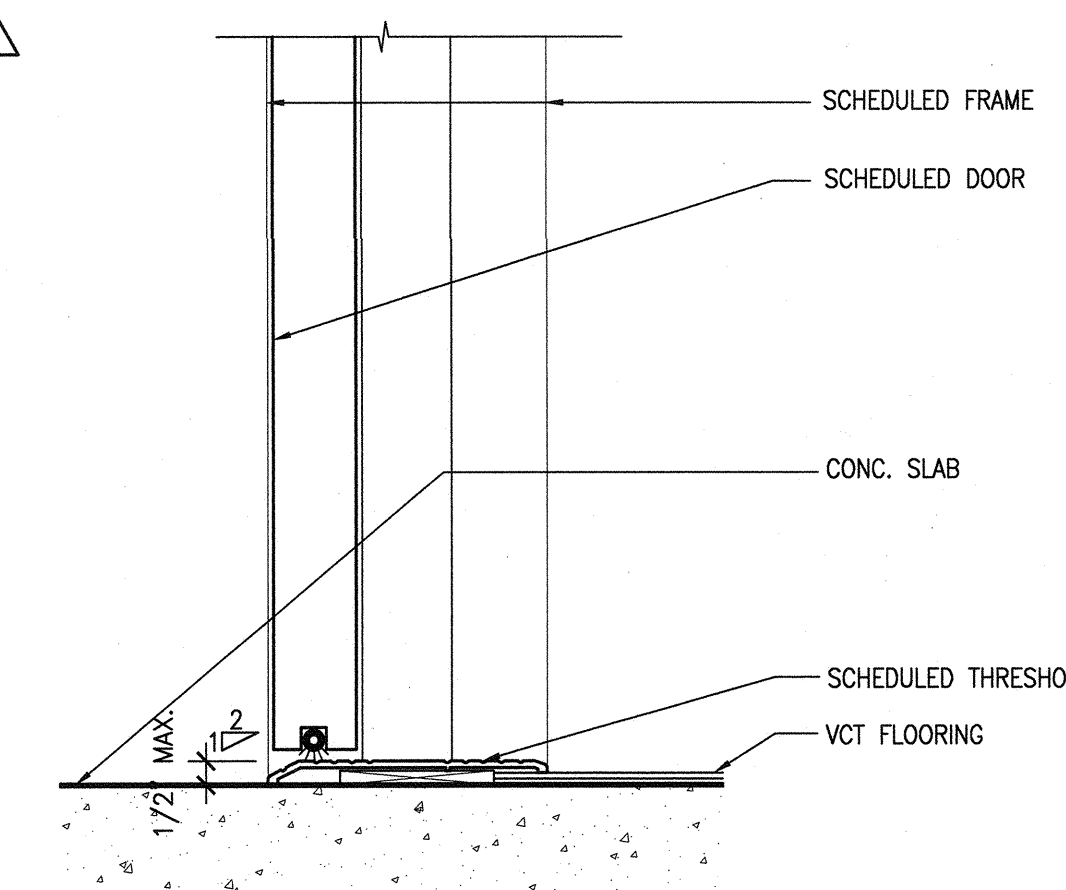

$$3'' = 1' - 0''$$


12 $\frac{27-12}{3} = 1' = 0$

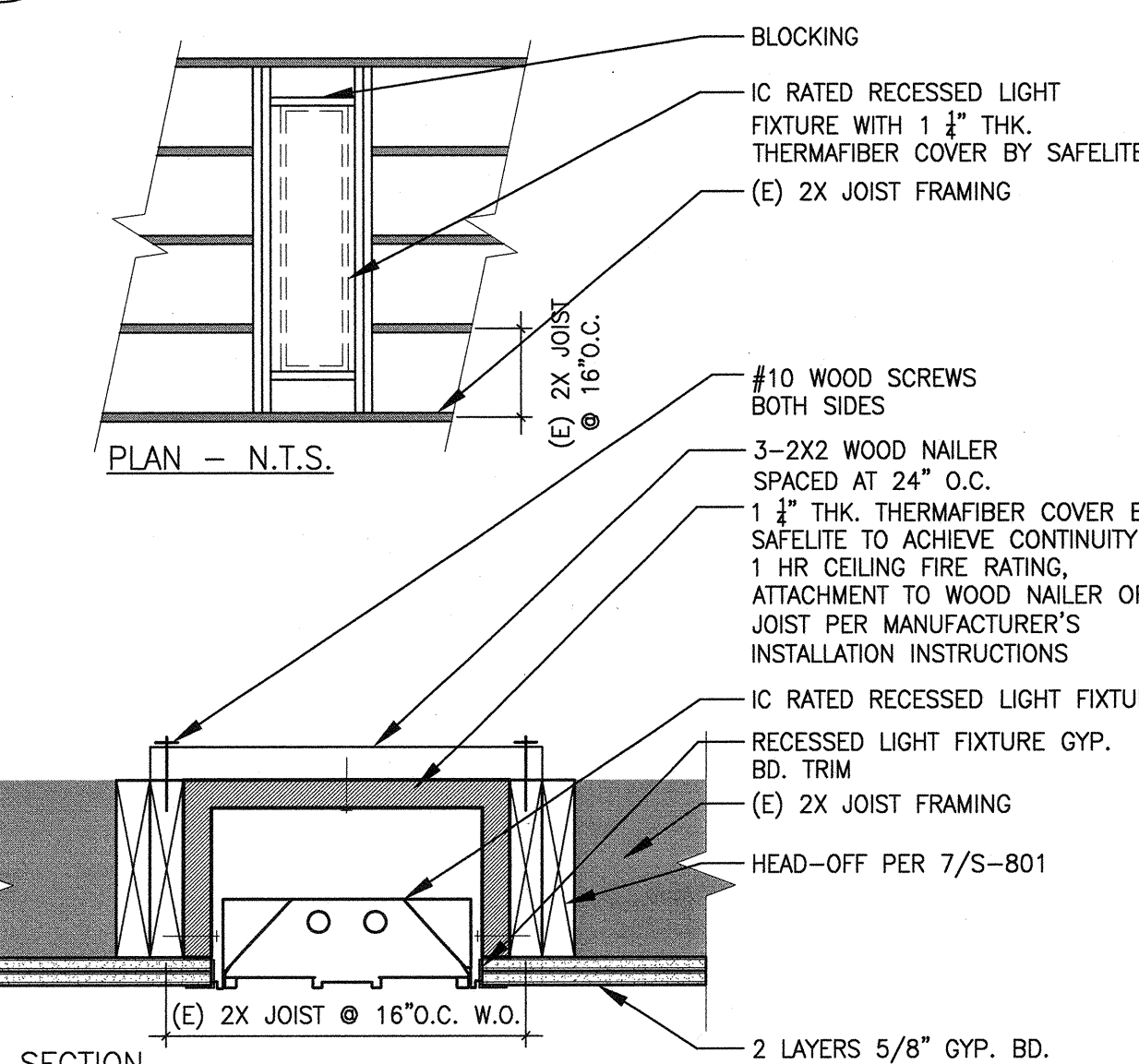
5 NT



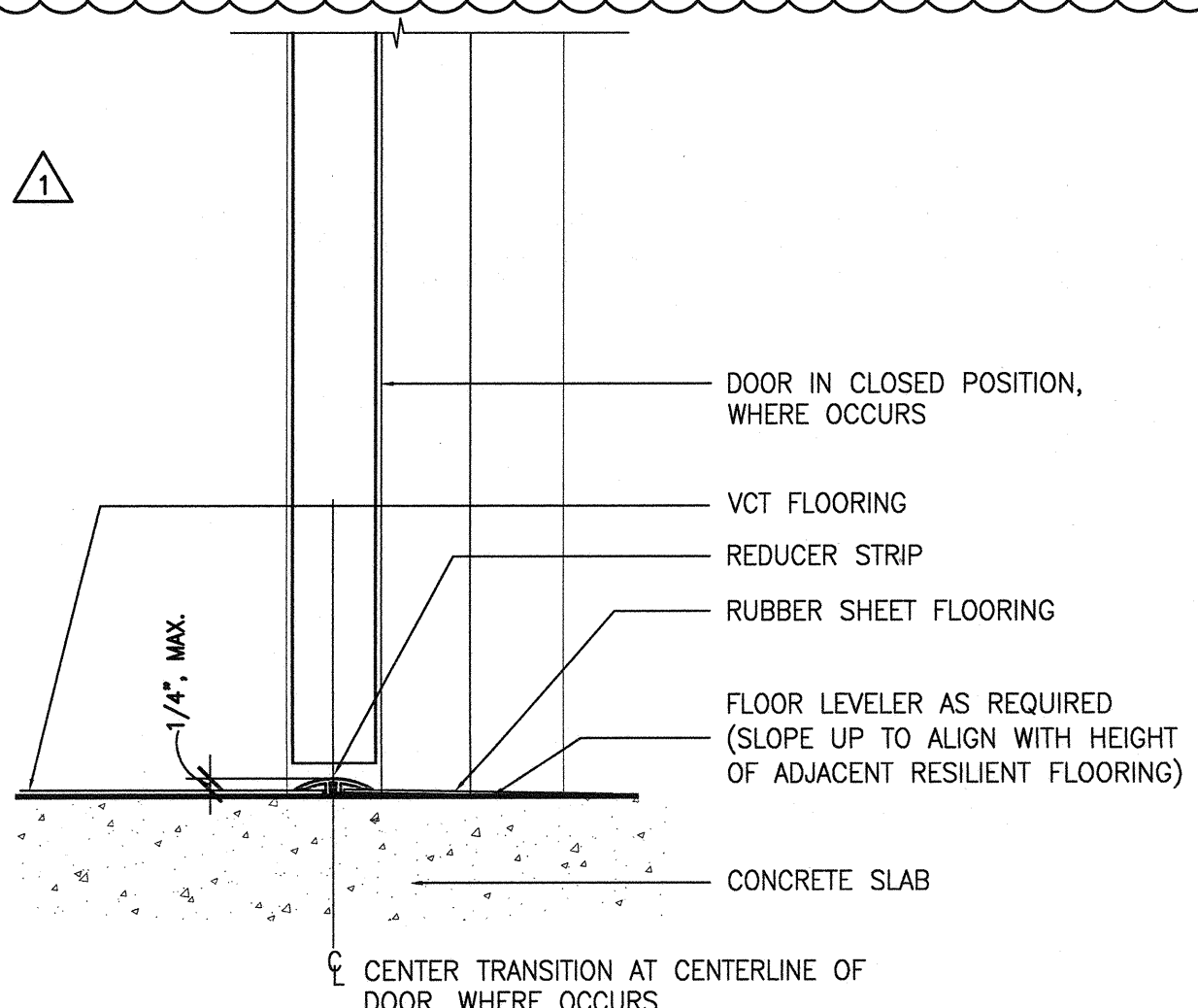
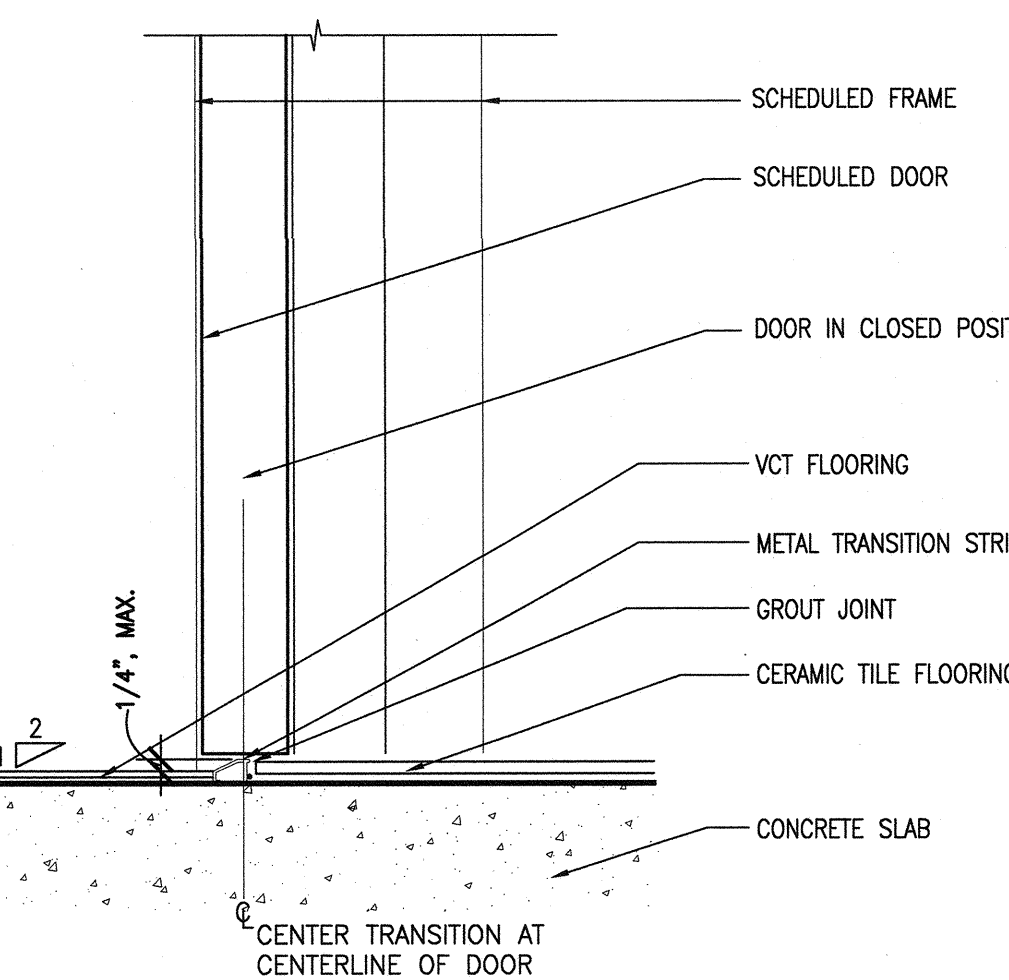
6 NT


$$3^0 = 1^0 - 0^0$$

$$3'' = 1' - 0''$$

SCALE: N



SCALE: M

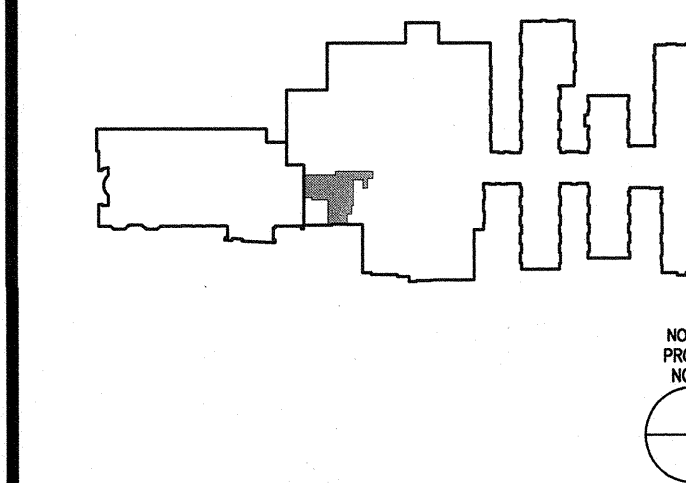

$$3^{20} - 1 =$$

$$4) \quad \overline{3'' = 1'}$$

NO.	ISSUES/REVISIONS	DATE
	100% CRITERIA DESIGN	06/07/20
	50% DETAILED DESIGN	12/02/20
	100% DETAILED DESIGN	12/21/21
	50% IMPLEMENTATION DOCUMENTS	01/14/22
	100% IMPLEMENTATION DOCUMENTS	02/04/22
⚠	OSHPD 1ST ROUND BACKCHECK RESPONSES	07/08/22
⚠	OSHPD 2ND ROUND BACKCHECK RESPONSES	10/18/22

NORTHBAY MEDICAL CENTER
CATH LAB RENOVATION II

OSHPD NO. HS101811-48

KEY PLAY



PROJECT NO.: 09017.01 DRAWN BY:
DATE: 06/07/2010 CHECKED BY:
SCALE: AS INDICATED

SHEET TITLE:

DETAILS

SHEET N

A-901