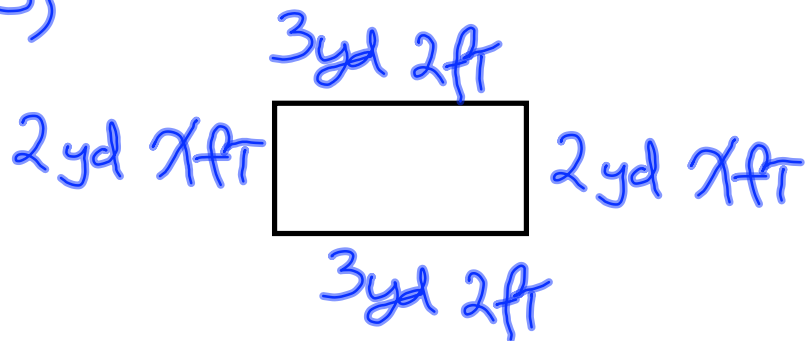
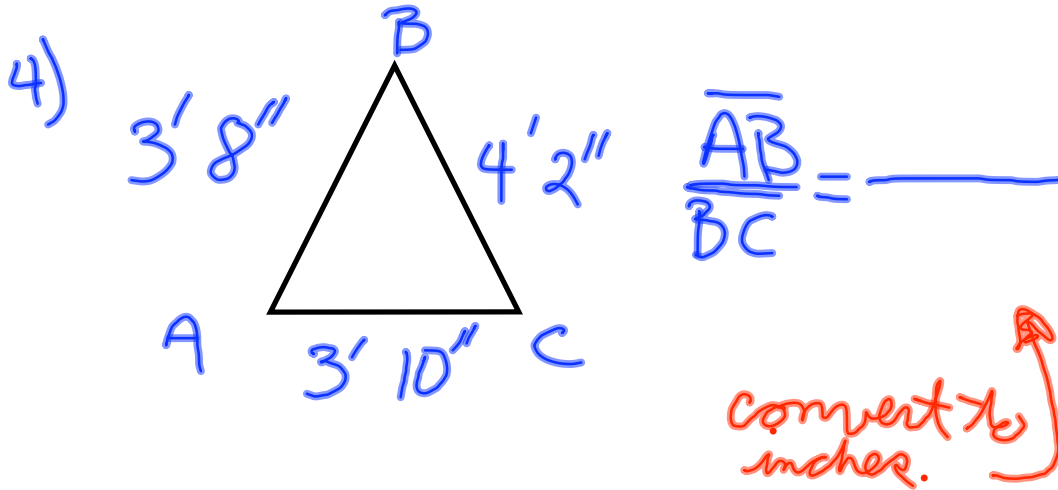


Chapter 4 book test.  
(review)

Hi  
Abbie ☺

3)





$$\begin{aligned} 5) \quad d &= r * T & d &= 250 \text{ mi} \\ & & r &= 55 \text{ mph} \\ & & T &= x \end{aligned}$$

7) hint: They give the scale in inches AND miles. Change the scale to be completely inches.

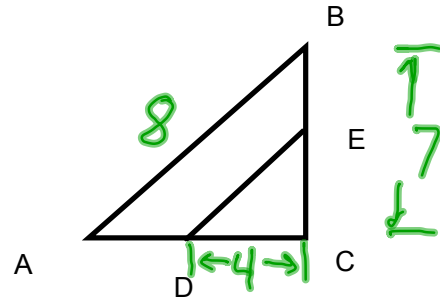
8) Look on page 166.

$$9) \frac{65 \text{ wds}}{1 \text{ min}} \times \frac{480 \text{ min}}{8 \text{ hrs}} =$$

10) use the cross product process we learned earlier.

12)  $\triangle ABC \sim \triangle DEC$

find the ratio  
of the perimeter.



hint: the ratio of the  
perimeter of  $\sim \triangle$ 's and the  
ratio of their corresponding  
sides, are the same.

for example. Side  $\overline{BC}$   
corresponds to side  $\overline{EC}$   
above.

We'll be having  
an "opportunity" later  
this week. (probably  
on Thursday.)