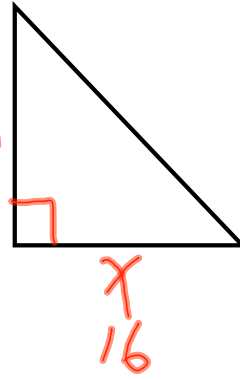
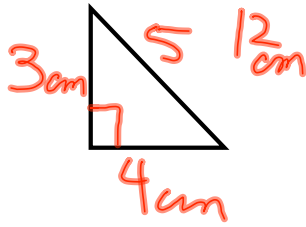


4.6

6)



$$\frac{3}{4} = \frac{12}{x}$$

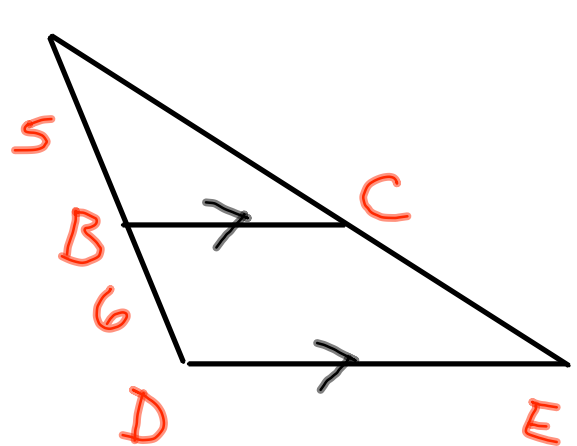
$$\frac{3x}{3} = \frac{48}{3}$$

$$1x = 16 \text{ cm.}$$

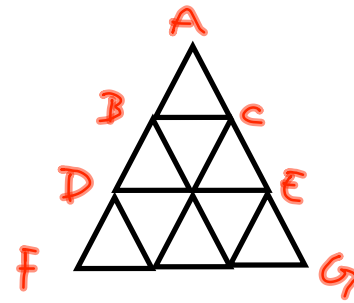
$$\overline{QR} = 16 \text{ cm.}$$

8) $\overline{AC} \sim \overline{CE}$?

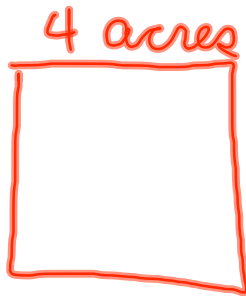
$5:6$



9) a $\overline{AB} : \overline{AF}$
 $1:3$

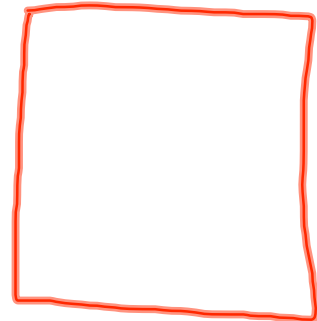


10)



worth \$90,000

tax \$3,000



worth \$12,000

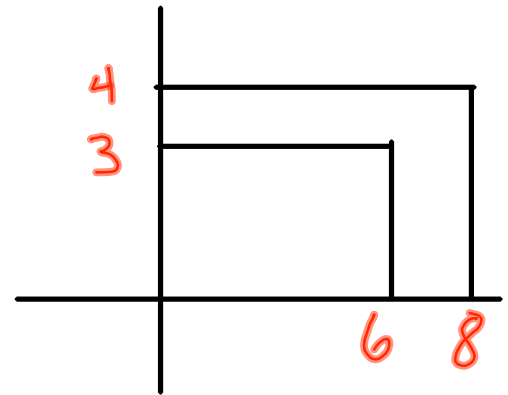
tax = X

$$\frac{90,000}{3,000} = \frac{12,000}{X} \text{ same}$$



11) a) find the ratio
of the sides

$3:4$ or $4:3$

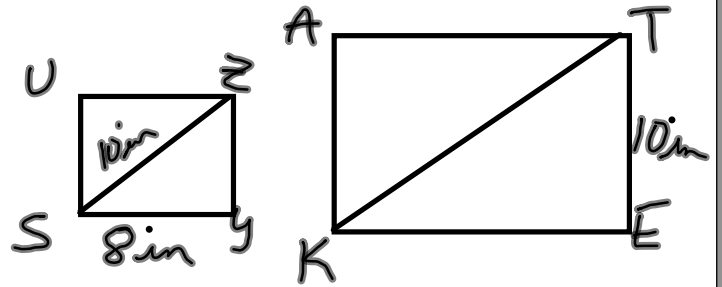


b) yoyo

c) yoyo

13)a find \overline{YZ}

hint: use
 $a^2 + b^2 = c^2$



13)b hint: now use ratios
 and cross product.

15)a hint: use ratios and cross product.