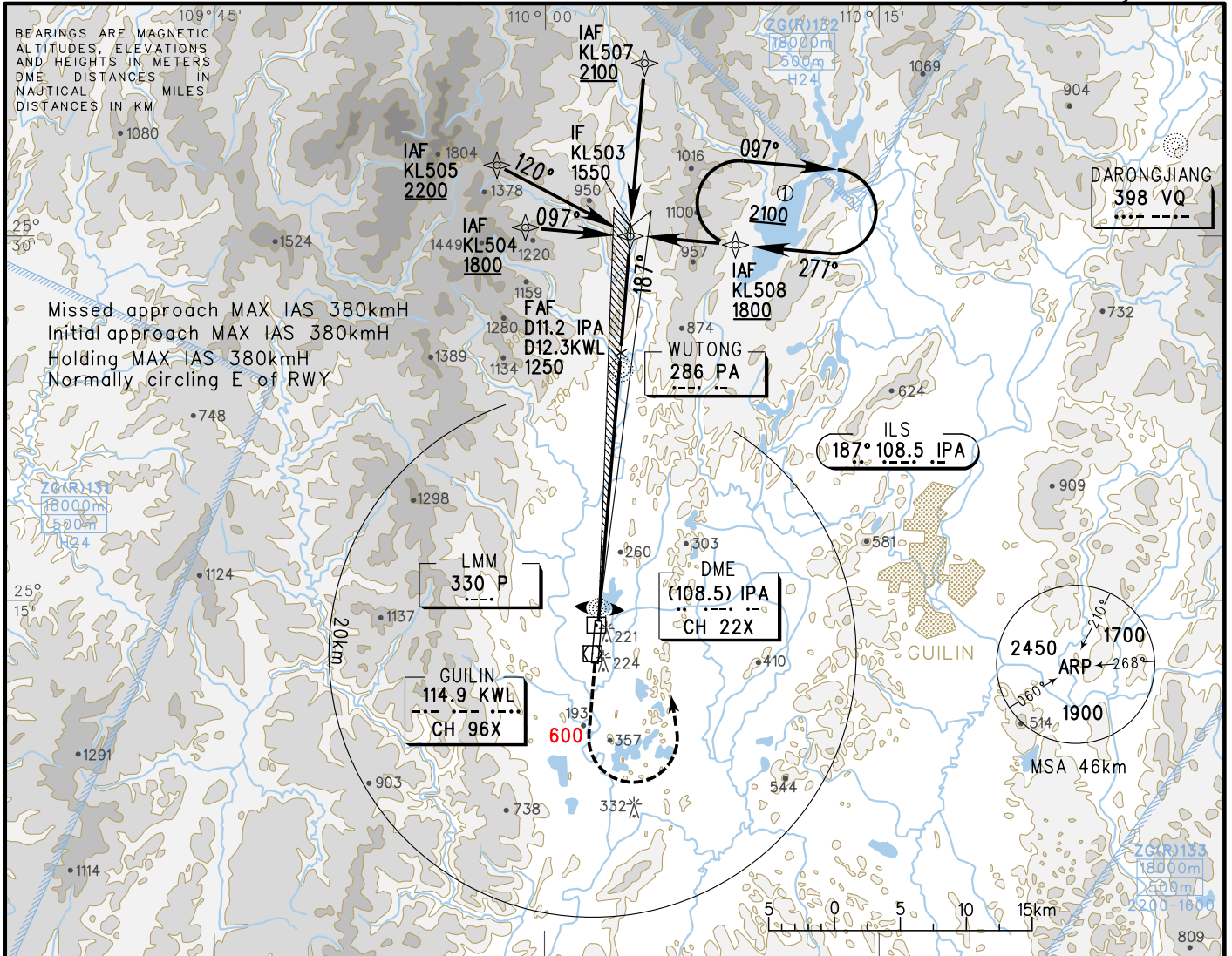


INSTRUMENT APPROACH CHART-ICAO

ATIS 126.45
 AERODROME ELEV 174 APP 120.85(124.65)
 VAR 2° W THR RWY19 ELEV 172.8 TWR 118.0 (118.7)

ZGKL GUILIN/Liangjiang

RNAV ILS/DME y RWY19



GP INOP	DME (IPA) (NM)	2	4	6	8	10	11		
	ALT (m)	365	559	753	947	1141	1238		

MISSED APPROACH
 Climb straight ahead to 600, turn LEFT to PA at 1800, join in approach or holding procedure.

TL 3600
 TA 3000
 3300(QNH>1031hPa)
 2700(QNH<=979hPa)

		A	B	C	D	FAF-MAPt(GP INOP) 19.3km								
ILS/DME	DA(H) RVR/VIS	233(60) 550/800			238(65) 550/800									
	GP INOP	MDA(H) VIS												
CIRCLING	MDA(H) VIS	A	365(191) 2600	370(196) 2600	440(266) 3600	445(271) 4400	GS in	kt	80	100	120	140	160	180
		B	365(191) 2600	460(286) 2600	585(411) 4400	780(606) 5000	kmH	150	185	220	260	295	335	
							Time	min:sec	7:49	6:15	5:13	4:28	3:54	3:28
							Rate of descent	m/s	2.2	2.7	3.2	3.8	4.3	4.9

Note: A East of RWY
 B West of RWY
 Changes: Landing minima for circling(E).