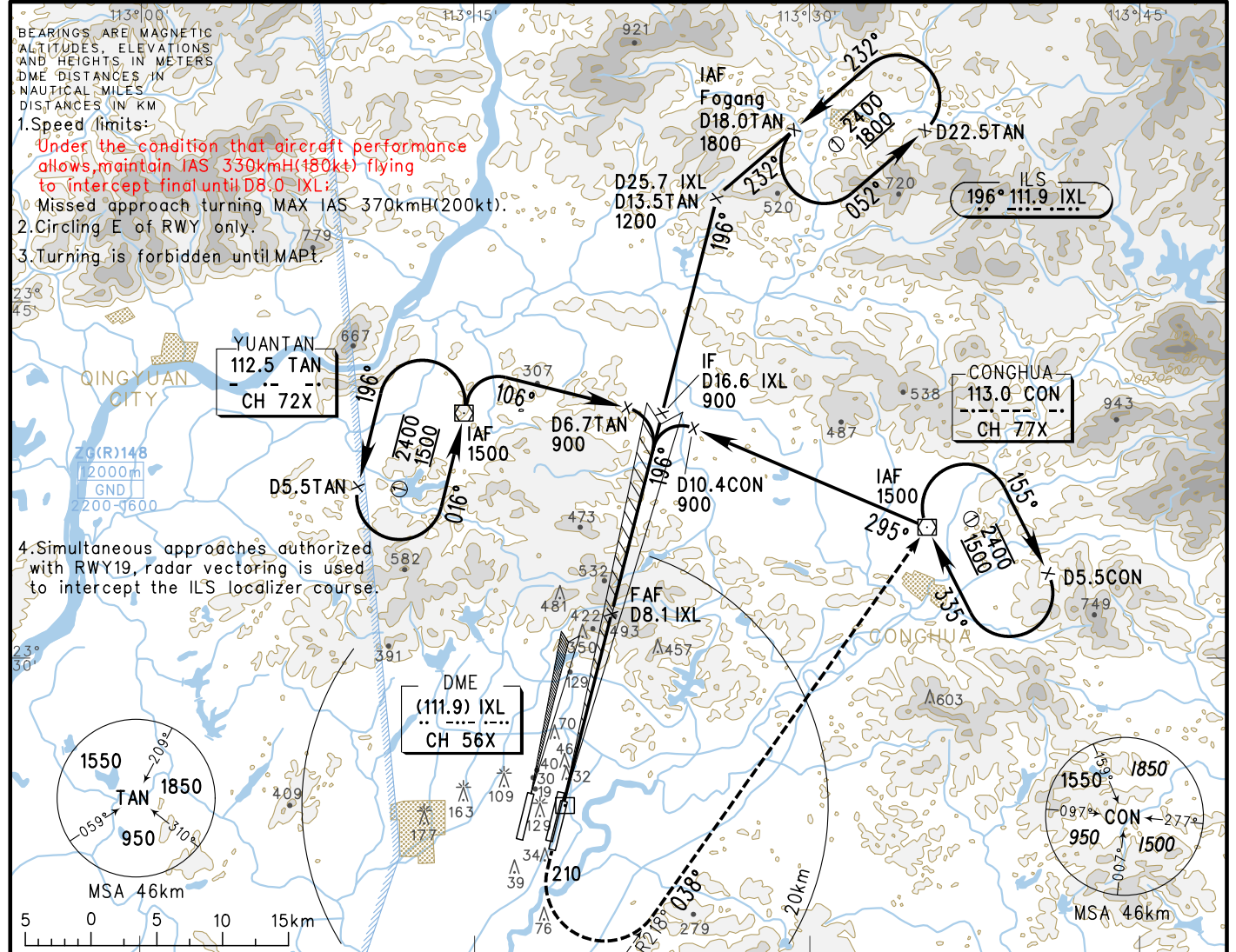


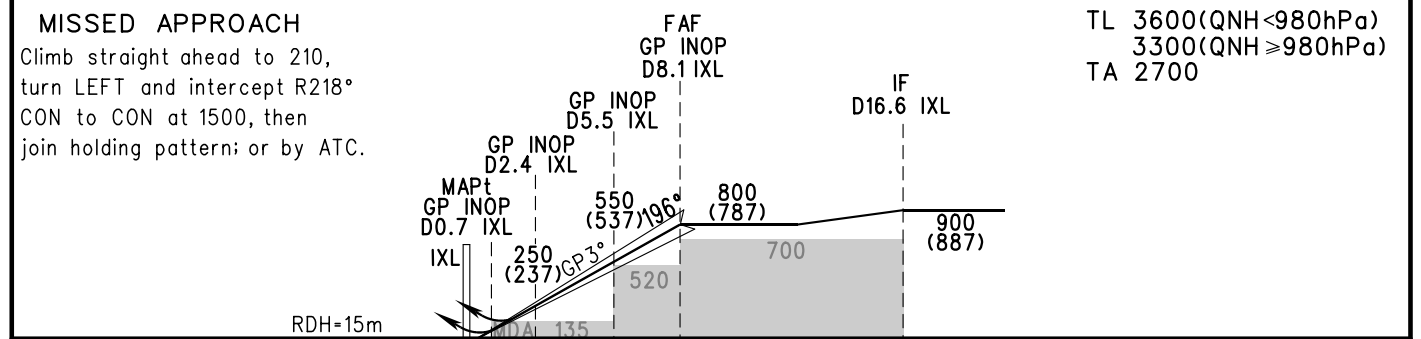
INSTRUMENT APPROACH CHART-ICAO

D-ATIS 128.6	APP 126.55(127.75)/AP01 119.70(127.75)/AP02 126.35(119.60)/AP03 121.05(124.20)/AP04 120.40(124.20)/AP05 121.175(127.75)/AP06
AERODROME ELEV 15 THR RWY20L ELEV 13.5	TWR 118.25(124.3)

ZGGG
GUANGZHOU/Baiyun
ILS/DME y RWY20L



GP INOP	DME (IXL) (NM)	1	2	3	4	5	6	7	8
	ALT (m)		208	305	402	499	596	693	790



ILS/DME	DA(H)	74(60)				FAF-MAPt(GP INOP) 13.7km						
	RVR/VIS	550/800				GS in kt	80	100	120	140	160	180
GP INOP	MDA(H)	130(117)				kmH	150	185	220	260	295	335
	VIS	1400				Time min:sec	5:33	4:26	3:42	3:10	2:46	2:28
CIRCLING	MDA(H)	220(205)	255(240)	355(340)	355(340)	Rate of descent m/s	2.2	2.7	3.2	3.8	4.3	4.9
	VIS	2300	2300	4400	5000		Changes: Notes.					