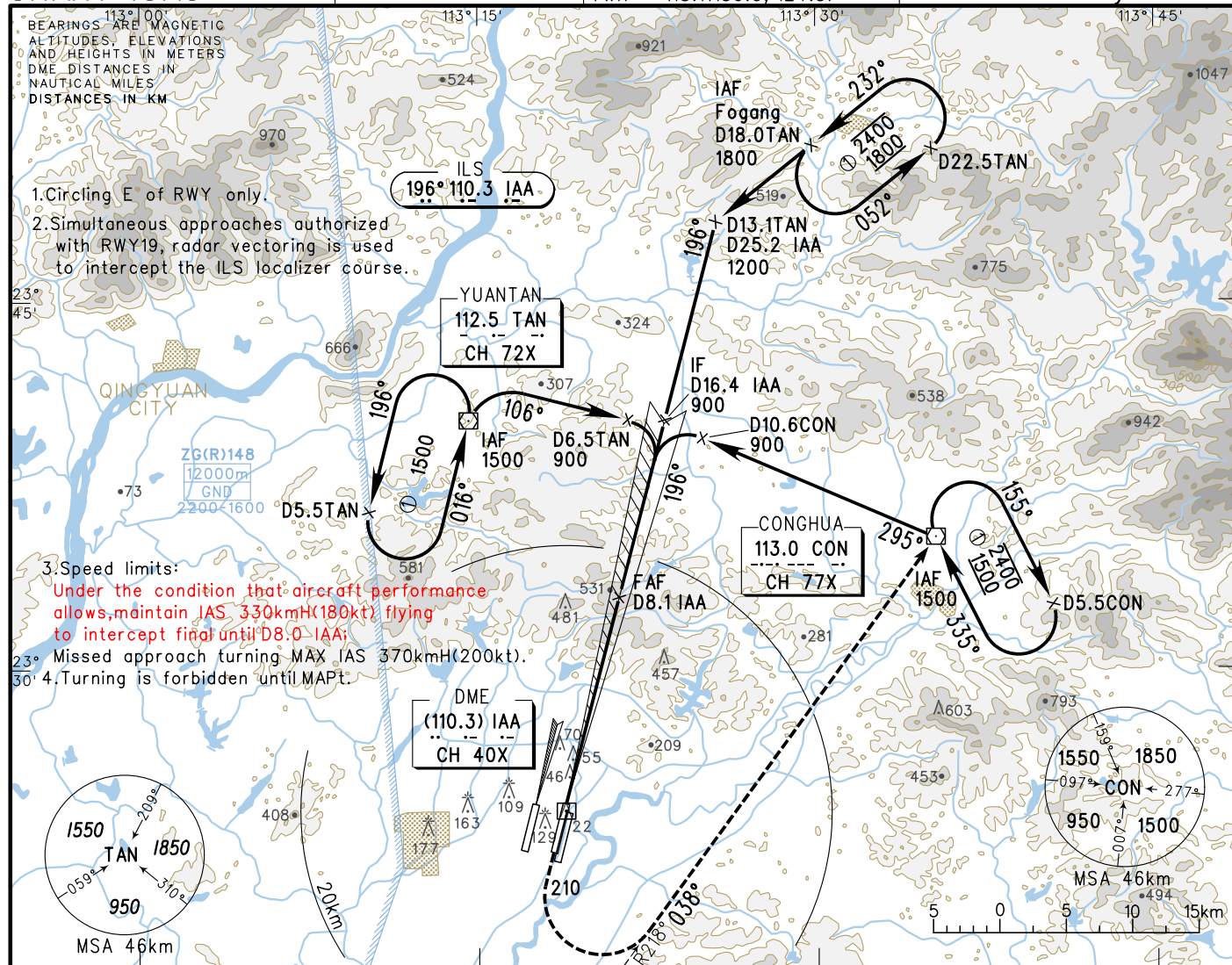


# INSTRUMENT APPROACH CHART-ICAO

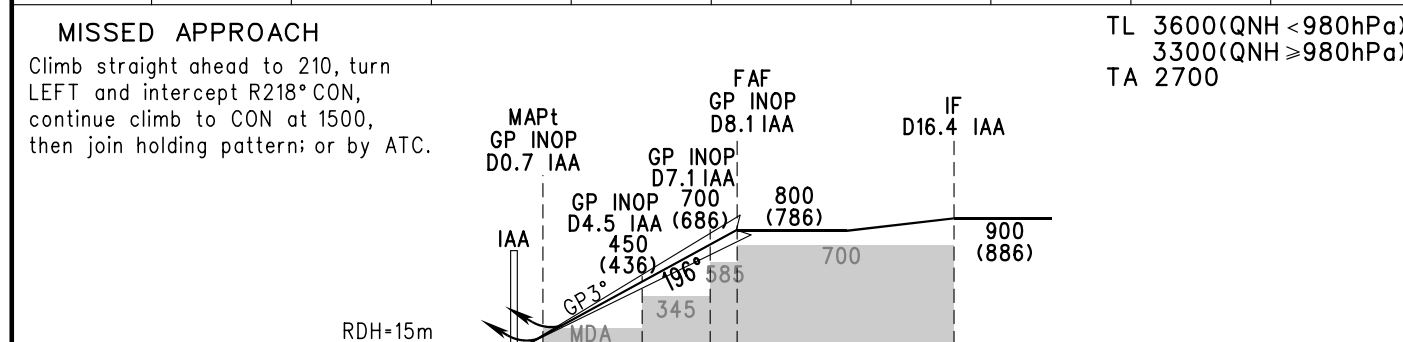
VAR2° W

D-ATIS 128.6	APP 126.55(127.75)/AP01 119.70(127.75)/AP02 126.35(119.60)/AP03 121.05(124.20)/AP04 120.40(124.20)/AP05 121.175(127.75)/AP06
AERODROME ELEV 15 THR RWY20R ELEV 14.5	TWR 118.1(130.0, 124.3)

ZGGG  
GUANGZHOU/Baiyun  
ILS/DME y RWY20R



GP INOP	DME (IAA) (NM)	2	3	4	5	6	7	8	9
	ALT (m)	206	303	400	498	595	692	789	



(THR displaced 200m inwards) 0 1.0 8.0 12.8 14.7 30.0km

ILS/DME	DA(H)	75(60)			
	RVR/VIS	550/800			
GP INOP	MDA(H)	130(115)			
	VIS	1300			
CIRCLING	MDA(H)	220(205)	255(240)	355(340)	355(340)
	VIS	2300	2300	4400	5000

FAF-MAPt(GP INOP) 13.7km						
GS in kt	80	100	120	140	160	180
kmH	150	185	220	260	295	335
Time min:sec	5:33	4:26	3:42	3:10	2:46	2:28
Rate of descent m/s	2.2	2.7	3.2	3.8	4.3	4.9

Changes: Notes.