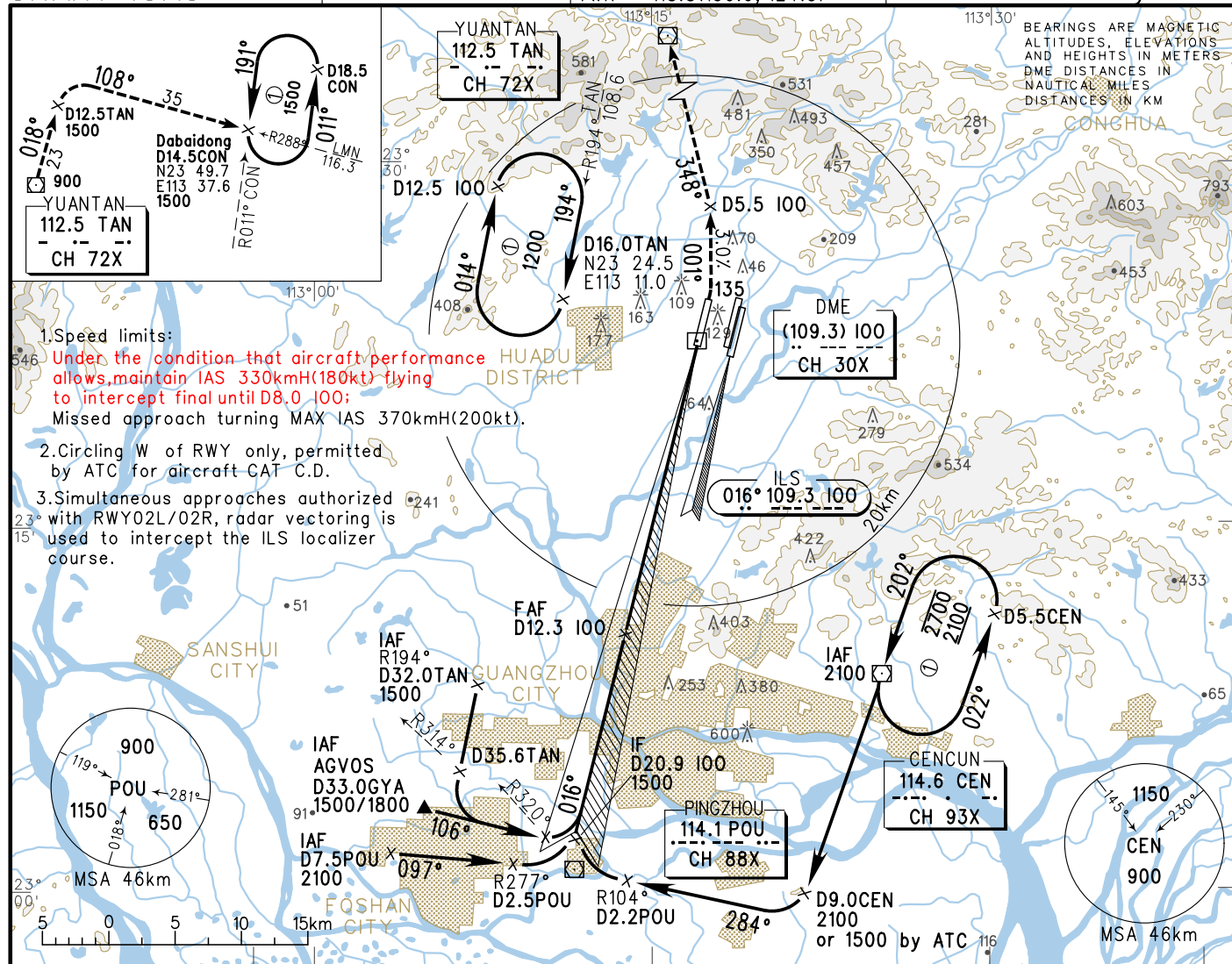


# INSTRUMENT APPROACH CHART-ICAO

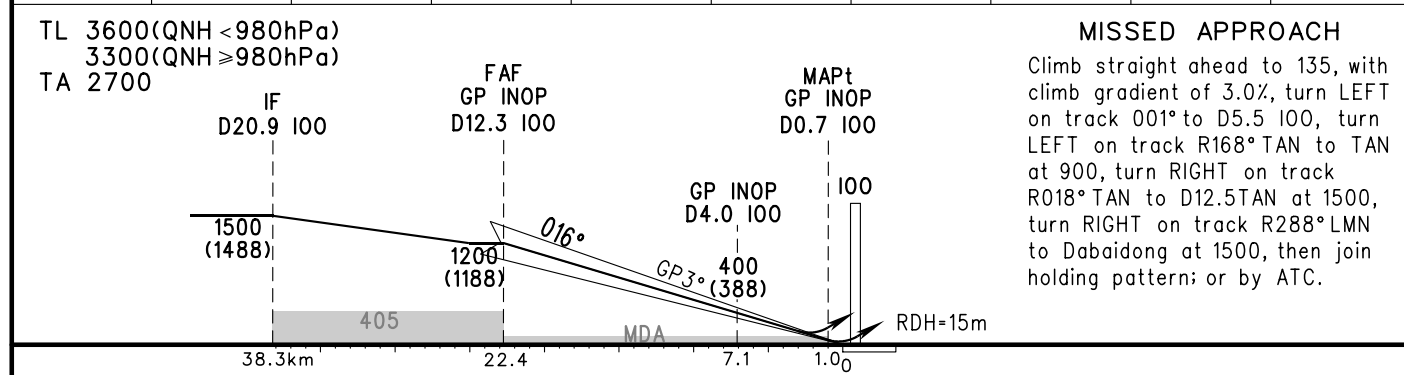
D-ATIS 128.6	APP 126.55(127.75)/AP01 119.70(127.75)/AP02 126.35(119.60)/AP03 121.05(124.20)/AP04 120.40(124.20)/AP05 121.175(127.75)/AP06
AERODROME ELEV 15 THR RWY01 ELEV 12.4	TWR 118.8(130.0, 124.3)

**ZGGG**  
**GUANGZHOU/Baiyun**  
ILS/DME y RWY01



- Speed limits:  
Under the condition that aircraft performance allows, maintain IAS 330kmH(180kt) flying to intercept final until D8.0 100;  
Missed approach turning MAX IAS 370kmH(200kt).
- Circling W of RWY only, permitted by ATC for aircraft CAT C.D.
- Simultaneous approaches authorized with RWY02L/02R, radar vectoring is used to intercept the ILS localizer course.

GP INOP	DME (100) (NM)	12	10	8	6	4	2	1	
	ALT (m)	1175	981	787	593	400	205		



	A	B	C	D	FAF-MAPt(GP INOP) 21.4km						
ILS/DME DA(DH) RVR/VIS	72(60) 550/800				GS in kt	80	100	120	140	160	180
GP INOP MDA(H) VIS	115(103) 1100		115(103) 1200		kmH	150	185	220	260	295	335
CIRCLING MDA(H) VIS	220(205) 2300	255(240) 2300	355(340) 4400	355(340) 5000	Time min:sec	8:40	6:56	5:47	4:57	4:20	3:51
					Rate of descent m/s	2.2	2.7	3.2	3.8	4.3	4.9