

# Sustainable & Organic

—  
2021



Organic | Recycled | Regenerated | Sustainable

T-Shirts	25 - 32
Performance	33
Polos	33 - 34
Sweats	36 - 38
Hoods	38 - 43
Shirts	44
Aprons & tea towel	44 - 45
Knitwear	46
Childrens	47 - 53
Headwear	54 - 55
Bags	55 - 59
Regatta Honestly Made	60 - 64
Result Genuine Recycled	65 - 69

# Just Hoods®

ORGANIC & RECYCLED  
**SUSTAINABLE**  
 Recycled

**JH230**  
 Organic  
 Sweatshirt  
 XS-XXL  
 P36

**JH201**  
 Organic  
 Hoodie  
 XS-3XL  
 P39

**JH250**  
 Organic  
 Zoodie  
 XS-XXL  
 P41

# NEW & ORGANIC

C O L L E C T I O N

80% organic cotton / 20% recycled polyester

**AWDis**

{ PETA - APPROVED  
 VEGAN }





03564

SOL'S  
the fair spirit

NEW

**03564 SOL'S  
Unisex Epic Organic T-Shirt**

100% OCS certified organic cotton.  
Ribbed collar.  
Tubular body.  
Twin needle stitching.  
Unbranded size label at neckline.

Weight: 135 gsm



<b>Size:</b>	XS	S	M	L	XL	XXL	3XL	4XL
<b>Chest (to fit):</b>	35/36	36/38	38/40	41/42	43/44	45/47	47/49	50/52



AM10

ANTHEM®

NEW

**AM10 Anthem  
Organic T-Shirt**

100% organic combed ringspun cotton.\*  
Fashion fit. Ribbed collar. Taped neck.  
Side seams. Twin needle stitching.  
Unbranded size label at neckline.

Weight: 145 gsm



<b>Size:</b>	XS	S	M	L	XL
<b>Chest (to fit):</b>	30/32	34/36	38/40	42/44	46/48
<b>Size:</b>	XXL	3XL	4XL	5XL	6XL
<b>Chest (to fit):</b>	50/52	54/56	58/60	62/64	66/68

\*Marl colours 60% organic combed ringspun cotton/40% polyester.

**T1100 Tee Jays  
Power T-Shirt**

100% supercarded OCS certified organic cotton.  
Narrow ribbed collar with elastane.  
Taped neck and shoulders. Tubular body.  
Twin needle stitching. Tear out label.

Weight: 140 gsm



<b>Size:</b>	XS	S	M	L	XL
<b>Chest (to fit):</b>	35/36	36/38	38/40	41/42	43/44
<b>Size:</b>	XXL	3XL	4XL	5XL	
<b>Chest (to fit):</b>	45/47	47/49	50/52	53/55	

**03254 RTP Apparel  
Tempo 145 Organic T-Shirt**

100% OCS certified organic ringspun semi-combed cotton.\*  
This style can only be ordered in packs of 10 or cartons of 50. Singles cannot be ordered. Packs and cartons are non-returnable. Pre-treated front body area ready for DTG - requires gentle handling (do not rub or stretch). Enzyme washed. Modern fit. Ribbed collar. Taped neck. Tubular body. Twin needle stitching. Unbranded size label at neckline. To be stored in a dust-free environment, in temperatures lower than 30°C.

Weight: 145 gsm



<b>Size:</b>	S	M	L	XL	XXL	3XL
<b>Chest (to fit):</b>	34/35	36/37	38/40	41/42	43/44	45/46
<b>Print area (cm):</b>	49 x 34	51 x 36	52 x 38	52 x 40	55 x 42	58 x 44

Decoration for illustration purposes only.  
\*Grey melange 85% cotton/15% viscose.



T1100

TEE JAYS®

NEW  
COLOURS

03254

RTP®  
APPAREL •

03255 P30



03256 P47

NEW

## 26 T-SHIRTS

EA001

écologie.  
by AWD is

EA001F P30



EA001B P47

**EA001 Ecologie  
Cascades Organic T-Shirt**

100% organic cotton.  
Single jersey. Fashion fit. Ribbed collar. Taped neck.  
Side seams. Twin needle sleeves and hem.  
Unbranded size label at neckline.

Weight: 150 gsm

Size:	S	M	L	XL	XXL
Chest (to fit):	36	40	44	48	52

**M80 Mantis  
Roll Sleeve T-Shirt**

100% OCS certified organic cotton.\*  
Modern fit. 1x1 ribbed collar.  
Bar tack stitched rolled sleeves.  
Twin needle hem. Tear out label.

Weight: 150 gsm

Size:	S	M	L	XL
Chest (to fit):	36/38	39/41	42/44	45/47

\*Charcoal marl 60% organic cotton/40% polyester.



03582

SOL'S  
the fair spirit

NEW

**03582 SOL'S  
Crusader Organic T-Shirt**

100% OCS certified organic  
semi-combed cotton.  
1x1 ribbed collar. Taped neck.  
Tubular body. Twin needle stitching.  
Unbranded size label at neckline.

Weight: 150 gsm

Size:	XS	S	M	L
Chest (to fit):	35/36	36/38	38/40	41/42
Size:	XL	XXL	3XL	4XL*
Chest (to fit):	43/44	45/47	47/49	50/52

\*Available in 4XL.

**03259 RTP Apparel  
Cosmic 155 Organic T-Shirt**

100% OCS certified organic combed  
ringspun cotton.\* This style can only be ordered in packs of 5 or cartons of 50. Singles  
cannot be ordered. Packs and cartons are non-returnable. Pre-treated front body area  
ready for DTG - requires gentle handling (do not rub or stretch). Enzyme washed. Modern  
fit. Ribbed collar. Taped neck. Tubular body. Twin needle stitching. Unbranded size label at  
neckline. To be stored in a dust-free environment, in temperatures lower than 30°C.

Weight: 155 gsm

Size:	S	M	L	XL	XXL	3XL
Chest (to fit):	34/35	36/37	38/40	41/42	43/44	45/46
Print area (cm):	49 x 34	51 x 36	52 x 38	52 x 40	55 x 42	58 x 44

Decoration for illustration purposes only. \*Grey melange 85% cotton/15% viscose.



M80

mantis



03259

RTP®  
APPAREL •

03260 P30



03261 P47



NEW





02076

SOL'S  
the fair spirit

02077 P135

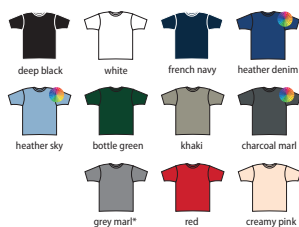


02078 Online

**02076 SOL'S  
Milo Organic T-Shirt**

100% organic cotton.\*  
Enzyme washed. Ribbed collar.  
Taped neck. Tubular body.  
Twin needle sleeves and hem.  
Unbranded size label at neckline.

Weight: 155 gsm



Size:	XS	S	M	L	XL	XXL	3XL
Chest (to fit):	35/36	36/38	38/40	41/42	43/44	45/47	47/49

\*Grey marl 85% organic cotton/15% viscose.



EA002

écologie.  
byAWDis

EA002F P32

**EA002 Ecologie  
Daintree EcoViscose T-Shirt**

70% Lenzing™ Ecovero™/30% organic cotton.  
Soft touch fabric derived from sustainably managed  
wood sources. Fashion fit. Ribbed collar. Taped neck.  
Side seams. Twin needle sleeves and hem.  
Unbranded size label at neckline.

Weight: 160 gsm



Size:	S	M	L	XL	XXL
Chest (to fit):	36	40	44	48	52

**KB371 Kariban  
Organic Crew Neck T-Shirt**

100% OCS certified organic cotton.\*  
Fashion slim fit. Ribbed collar. Side seams.  
Twin needle stitching.  
Unbranded size label at neckline.

Weight: 155 gsm



Size:	S	M	L	XL	XXL
Chest (to fit):	34/36	38	40	42	44/46

\*Heathers 80% OCS certified organic cotton/20% polyester.

\*\*Grey heather 70% OCS certified organic cotton/30% viscose.

**M01 Mantis  
Essential Organic T-Shirt**

100% OCS certified organic cotton.  
Modern fit. Narrow fine ribbed collar. Taped neck.  
Side seams. Twin needle straight hem. Tear out label.

Weight: 160 gsm



Size:	XS	S	M	L
Chest (to fit):	34/36	36/38	39/41	42/44
Size:	XL	XXL	3XL	
Chest (to fit):	45/47	48/49	50/52	



KB371

KARIBAN



KB391 Online



M01

mantis



M02 P30

## 28 T-SHIRTS

FB1901

ORIGINAL  
**FNB****FB1901 Original FNB  
Unisex Organic T-Shirt**

100% certified organic ringspun combed cotton.  
Pre-shrunk. Ribbed collar. Taped neck. Side seams.  
Twin needle stitching. Tear out label.

Weight: 175 gsm

Size:	XXS	XS	S	M	L	XL	XXL	3XL
Chest (to fit):	32/34	35/36	37/38	39/40	41/42	43/44	45/47	48/50

**108M Russell  
Pure Organic T-Shirt**

100% certified organic ringspun combed cotton.\*  
Shaped fit. Narrow ribbed collar with Lycra®.  
Taped neck and shoulders. Side seams.  
Twin needle sleeves and hem.  
Unbranded size label at neckline.

Weight: 160 gsm

Size:	XS	S	M	L	XL	XXL	3XL
Chest (to fit):	34/36	36/38	38/40	40/42	42/44	44/46	46/48

\*Light oxford 93% organic cotton/7% viscose.



108M



108F P31



108B P47



03565

SOL'S®  
the fair spirit

NEW

**03565 SOL'S  
Pioneer Organic T-Shirt**

100% OCS certified organic semi-combed cotton.  
1x1 ribbed collar.  
Taped neck. Tubular body.  
Twin needle stitching.  
Unbranded size label at neckline.

Weight: 175 gsm



Size:	XS	S	M	L	XL	XXL	3XL	4XL*
Chest (to fit):	35/36	36/38	38/40	41/42	43/44	45/47	47/49	50/52

\*Available in 4XL.

**03270 RTP Apparel  
Tempo 185 Organic T-Shirt**

100% OCS certified organic ringspun cotton.\*  
This style can only be ordered in packs of 10 or cartons of 50. Singles cannot be ordered.  
Packs and cartons are non-returnable. Pre-treated front body area ready for DTG - requires gentle handling (do not rub or stretch). Enzyme washed. Modern fit. Ribbed collar. Taped neck. Tubular body. Twin needle stitching. Unbranded size label at neckline.  
To be stored in a dust-free environment, in temperatures lower than 30°C.

Weight: 185 gsm

Size:	S	M	L	XL	XXL	3XL
Chest (to fit):	34/35	36/37	38/40	41/42	43/44	45/46
Print area (cm):	49 x 34	51 x 36	52 x 38	52 x 40	55 x 42	58 x 44

Decoration for illustration purposes only.  
\*Grey melange 85% cotton/15% viscose.



03270

RTP®  
APPAREL •

03257 P31



03258 P47







EA021

écologie.  
by AWDiS

### EA021 Ecologie Erawan Organic Long Sleeve T-Shirt

100% organic cotton.  
Single jersey. Soft touch. Fashion fit.  
Ribbed collar. Taped neck. Side seams.  
Twin needle sleeves and hem. Unbranded size label.

Weight: 150 gsm



Size:	XS	S	M	L	XL	XXL
Chest (to fit):	32	36	40	44	48	52



AM11

ANTHEM®

NEW

### AM11 Anthem Organic Long Sleeve T-Shirt

100% organic combed ringspun cotton.\*  
Fashion fit. Ribbed collar. Taped neck. Side seams with mitred vents.  
1x1 ribbed cuffs. Twin needle stitching. Unbranded size label at neckline.

Weight: 145 gsm



Size:	XS	S	M	L	XL
Chest (to fit):	30/32	34/36	38/40	42/44	46/48
Size:	XXL	3XL	4XL**	5XL**	6XL**
Chest (to fit):	50/52	54/56	58/60	62/64	66/68

\*Grey marl 60% organic combed ringspun cotton/40% polyester.  
\*\*Available in 4XL, 5XL and 6XL.



### 100M Russell Pure Organic Long Sleeve T-Shirt

100% certified organic ringspun combed cotton.  
Shaped fit. Narrow ribbed collar with Lycra®.  
Taped neck and shoulders. Side seams.  
Twin needle sleeves and hem. Unbranded size label.

Weight: 160 gsm



Size:	XS	S	M	L	XL	XXL	3XL
Chest (to fit):	34/36	36/38	38/40	40/42	42/44	44/46	46/48



### M136 One By Mantis Unisex Long Sleeve Breton Stripe T-Shirt

100% OCS certified organic combed ringspun cotton.  
Yarn dyed stripes. Soft stretch fabric. Side vents.  
Drop tail. Twin needle stitching. Tear out label.

Weight: 200 gsm



100M

R  
russell  
pure organic



M136

one  
by mantis

## 30 T-SHIRTS

03255

RTP®  
APPAREL •

NEW

**03255 RTP Apparel  
Ladies Tempo 145 Organic T-Shirt**

100% OCS certified organic ringspun semi-combed cotton.\* This style can only be ordered in packs of 10 or cartons of 50. Singles cannot be ordered. Packs and cartons are non-returnable. Pre-treated front body area ready for DTG - requires gentle handling (do not rub or stretch). Enzyme washed. Modern fit. Ribbed collar. Taped neck. Side seams. Twin needle stitching. Unbranded size label at neckline. To be stored in a dust-free environment, in temperatures lower than 30°C. Also available in mens 03254 and kids 03256.

Weight: 145 gsm

Size:	XS	S	M
Ladies size:	4/6	8	10
Chest (to fit):	32/33	34/35	36/37
Print area (cm):	41 x 26	42 x 28	44 x 29
Size:	L	XL	XXL
Ladies size:	12	14	16/18
Chest (to fit):	26/27	28/29	30/31
Print area (cm):	46 x 30	47 x 32	48 x 33

Decoration for illustration purposes only.

\*Grey melange 85% cotton/15% viscose.

M193



mantis

**M193 Mantis  
Ladies The Boyfriend T-Shirt**

100% OCS certified organic combed ringspun cotton.\*  
Relaxed fit. Self fabric bound neckline. Drop shoulder. Bar tack stitched rolled sleeves. Side seams. Twin needle hem. Tear out label.

Weight: 150 gsm

Size:	S	M	L	XL
Chest (to fit):	32/34	35/37	38/40	41/43

\*Heather marl 85% organic cotton/15% viscose.



03260

RTP®  
APPAREL •

NEW

**03260 RTP Apparel  
Ladies Cosmic 155 Organic T-Shirt**

100% OCS certified organic combed ringspun cotton.\* This style can only be ordered in packs of 5 or cartons of 50. Singles cannot be ordered. Packs and cartons are non-returnable. Pre-treated front body area ready for DTG - requires gentle handling (do not rub or stretch). Enzyme washed. Modern fit. Ribbed collar. Taped neck. Side seams. Twin needle stitching. Unbranded size label at neckline. To be stored in a dust-free environment, in temperatures lower than 30°C. Also available in mens 03259 and kids 03261.

Weight: 155 gsm

Size:	XS	S	M
Ladies size:	4/6	8	10
Chest (to fit):	26/27	28/29	30/31
Print area (cm):	41 x 26	42 x 28	44 x 29
Size:	L	XL	XXL
Ladies size:	12	14	16/18
Chest (to fit):	32/33	34/35	36/37
Print area (cm):	46 x 30	47 x 32	48 x 33

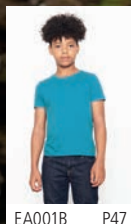
Decoration for illustration purposes only.

\*Grey melange 85% cotton/15% viscose.

EA001F

écologie.  
by AWDiS

EA001 P26



EA001B P47

**EA001F Ecologie  
Ladies Cascades Organic T-Shirt**

100% organic cotton.  
Single jersey. Fashion fit. Ribbed collar. Taped neck. Side seams. Twin needle sleeves and hem. Unbranded size label at neckline.

Weight: 150 gsm

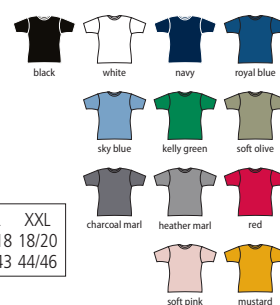
Size:	XS	S	M	L	XL
Ladies size:	8	10	12	14	16

**M02 Mantis  
Ladies Essential Organic T-Shirt**

100% OCS certified organic cotton.  
Modern fit. Narrow fine ribbed collar. Taped neck. Side seams. Twin needle straight hem. Tear out label.

Weight: 160 gsm

Size:	XS	S	M	L	XL	XXL
Ladies size:	8	8/10	12	14	16/18	18/20
Chest (to fit):	30/32	32/34	35/37	38/40	41/43	44/46



M02

mantis



M01 P27







03257

RTP®  
APPAREL

03270 P28



03258 P47

NEW

## 03257 RTP Apparel

## Ladies Tempo 185 Organic T-Shirt

100% OCS certified organic ringspun cotton.\*

This style can only be ordered in packs of 10 or cartons of 50. Singles cannot be ordered. Packs and cartons are non-returnable. Pre-treated front body area ready for DTG - requires gentle handling (do not rub or stretch). Enzyme washed. Modern fit. Ribbed collar. Taped neck. Side seams. Twin needle stitching. Unbranded size label at neckline. To be stored in a dust-free environment, in temperatures lower than 30°C.

Weight: 185 gsm

Size:	XS	S	M	L	XL	XXL
Ladies size:	4/6	8	10	12	14	16/18
Chest (to fit):	26/27	28/29	30/31	32/33	34/35	36/37
Print area (cm):	41 x 26	42 x 28	44 x 29	46 x 30	47 x 32	48 x 33

Decoration for illustration purposes only.

\*Grey melange 85% cotton/15% viscose.



## 108F Russell

## Ladies Pure Organic T-Shirt

100% certified organic ringspun combed cotton.\*

Shaped fit. Narrow ribbed collar with Lycra®. Taped neck and shoulders. Side seams. Twin needle sleeves and hem. Unbranded size label at neckline.

Weight: 160 gsm

Size:	XS	S	M	L	XL	XXL
Ladies size:	8	10	12	14	16	18
Chest (to fit):	30/32	32/34	34/36	36/38	38/40	40/42

\*Light oxford 93% organic cotton/7% viscose.



## M129 Mantis

## Flash Dance T-Shirt

100% OCS certified organic combed ringspun cotton.

Loose fit. Raglan sleeves. Wide, off the shoulder neckline.

Raw edge neckline and sleeves. Side vents. Drop tail. Tear out label.

Weight: 150 gsm

Size:	S	M	L	XL
Ladies size:	8/10	12	14	16/18
Chest (to fit):	32/34	35/37	38/40	41/43



## M91 Mantis

## Ladies Loose Fit T-Shirt

100% OCS certified organic combed cotton.\*

Loose fit. Wide neckline. Longer length.

Twin needle sleeves and hem. Curved hem. Tear out label.

Weight: 125 gsm

Size:	XS*	S	M	L	XL	XXL**
Ladies size:	8	8/10	12	14	16/18	18/20
Chest (to fit):	30/32	32/34	35/37	38/40	41/43	44/46

\*Heather marl 85% organic cotton/15% viscose. \*\*Charcoal marl 60% organic cotton/40% polyester.

\*Natural marl 80% organic cotton/20% polyester. \*\*Available in XS and XXL. \*Available in XXL.



M91

mantis



M129

mantis



M96



## mantis

**M96 Mantis**  
**Ladies Organic Cropped T-Shirt**

100% OCS certified organic combed ringspun cotton.\*  
Fashion, loose fit. Drop shoulders.  
1x1 ribbed collar. Rolled sleeves.  
Twin needle hem. Tear out label.

Weight: 150 gsm

Size:	XS	S	M	L
Ladies size:	8	8/10	12	14
Chest (to fit):	30/32	32/34	35/37	38/40

\*Heather marl 85% organic cotton/15% polyester.

NEW  
COLOURS

M147



## mantis

**M147 Mantis**  
**Ladies Loose Fit V Neck T-Shirt**

100% OCS certified organic cotton.\*  
Loose fit.  
Wide, self fabric bound deep V neckline.  
Longer length.  
Twin needle curved back hem.  
Tear out label.

Weight: 125 gsm

Size:	S	M	L	XL
Ladies size:	8/10	12	14	16/18
Chest (to fit):	32/34	35/37	38/40	41/43

\*Heather marl 85% organic cotton/15% viscose.



M133

one  
by mantis**M133 One By Mantis**  
**Unisex Drop Armhole Vest Top**

100% OCS certified organic cotton.\*  
Fashion fit.  
Narrow bound neckline and armholes.  
Drop armholes.  
High back.  
Tear out label.

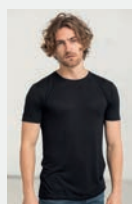
Weight: 150 gsm

Size:	XS	S	M	L	XL
Chest (to fit):	33/35	36/38	39/41	42/44	45/47

\*Heather marl 85% organic cotton/15% viscose.



EA002F

écologie.  
by AWDiS

EA002 P27

**EA002F Ecologie**  
**Ladies Daintree EcoViscose**  
**Cropped T-Shirt**

70% Lenzing™ Ecovero™/30% organic cotton.  
Soft touch fabric derived from sustainably managed wood sources. Fashion fit. Ribbed collar. Taped neck.  
Side seams. Cropped length. Curved back hem. Twin needle sleeves and hem.  
Unbranded size label at neckline.

Weight: 160 gsm

Size:	XS	S	M	L	XL
Ladies size:	8	10	12	14	16

**M92 Mantis**  
**Ladies Loose Fit Vest**

100% OCS certified organic combed ringspun cotton.\*  
Loose fit. Lower front and back neck. Bound neckline and armholes. Longer length. Twin needle curved hem. Tear out label.

Weight: 125 gsm

Size:	XS <sup>▲</sup>	S	M	L	XL	XXL <sup>▲</sup>
Ladies size:	8	8/10	12	14	16/18	18/20
Chest (to fit):	30/32	32/34	35/37	38/40	41/43	44/46

\*Charcoal marl 60% organic cotton/40% polyester.

\*\*Natural marl 80% organic cotton/20% polyester.

▲Available in XS and XXL.



M92

## mantis







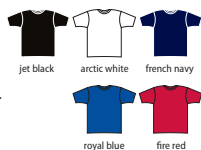
EA004F P33

**EA004 Ecologie  
Ambaro Recycled Sports T-Shirt**

100% recycled polyester.  
Textured birdseye knit. Fashion fit. Ribbed collar. Taped neck.  
Side seams. Twin needle sleeves and hem.  
Unbranded size label at neckline.

Weight: 140 gsm

Size:	S	M	L	XL	XXL
Chest (to fit):	36	40	44	48	52

**03566 SOL'S  
Planet Organic Piqué Polo Shirt**

100% OCS certified organic cotton.  
Regular fit. Ribbed collar and cuffs. Taped neck.  
Two self colour button placket.  
Twin needle hem. Unbranded size label at neckline.

Weight: 170 gsm

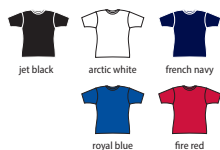
Size:	S	M	L	XL	XXL	3XL	4XL	5XL
Chest (to fit):	36/38	38/40	41/42	43/44	45/47	47/49	50/52	53/55

**EA004F Ecologie  
Ladies Ambaro Recycled Sports T-Shirt**

100% recycled polyester.  
Textured birdseye knit. Fashion fit. Ribbed collar.  
Taped neck. Side seams. Twin needle sleeves and hem.  
Unbranded size label at neckline.

Weight: 140 gsm

Size:	XS	S	M	L	XL
Ladies size:	8	10	12	14	16

**EA011 Ecologie  
Etosha Organic Piqué Polo Shirt**

100% organic cotton.  
Fashion fit. Narrow knitted collar and cuffs. Taped neck. Two button placket.  
Side seams. Twin needle sleeves and hem. Unbranded size label.

Weight: 170 gsm

Size:	XS	S	M	L	XL	XXL
Chest (to fit):	32	36	40	44	48	52



EA004 P33



## 34 POLOS

KB209

KARIBAN



KB210 Online

**KB209 Kariban  
Organic Piqué Polo Shirt**

100% OCS certified organic cotton.\*

Ribbed collar and cuffs. Taped neck and side vents. Three self colour button placket. Unbranded size label at neckline.

Weight: 220 gsm

<b>Size:</b>	S	M	L	XL	XXL
<b>Chest (to fit):</b>	34/36	38	40	42	44/46

\*Heathers 80% OCS certified organic cotton/20% polyester.

\*\*Grey heather 70% OCS certified organic cotton/30% viscose.



H465

HENBURY

CUT-OUT LABEL



NEW

**H465 Henbury  
Recycled Polyester Piqué Polo Shirt**

100% recycled polyester. Double piqué.

Quick drying fabric with wicking properties. Regular fit. 1x1 ribbed collar and cuffs. Three self colour button placket. Twin needle hem. Cut out label.

Suitable for sublimation printing.

Weight: 180 gsm

<b>Size:</b>	XS	S	M	L	XL	XXL	3XL	4XL
<b>Chest (to fit):</b>	34/36	36/38	38/40	42	44/46	48	50/52	54

**M191 Mantis  
The Tipped Polo Shirt**

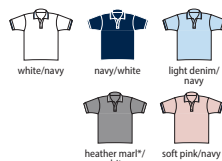
100% OCS certified organic cotton.\*

Micro piqué. Ribbed collar and cuffs with contrast tipping. Taped neck. Narrow two button placket with coconut shell buttons. Side vents. Drop tail. Tear out label.

Weight: 200 gsm

<b>Size:</b>	S	M	L	XL	XXL
<b>Chest (to fit):</b>	36/38	39/41	42/44	45/47	48/49

\*Heather marl 85% organic cotton/15% viscose.

**M192 Mantis  
Ladies The Tipped Polo Shirt**

100% OCS certified organic cotton.\*

Micro piqué. Ribbed collar and cuffs with contrast tipping. Taped neck. Narrow two button placket with coconut shell buttons. Side vents. Drop tail. Tear out label.

Weight: 200 gsm

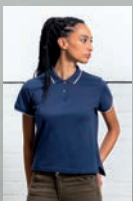
<b>Size:</b>	S	M	L	XL
<b>Chest (to fit):</b>	32/34	35/37	38/40	41/43

\*Heather marl 85% organic cotton/15% viscose.



M191

mantis

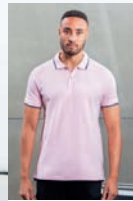


M192 P34



M192

mantis



M191 P34

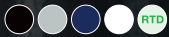




# ORIGINAL FNB

SOCIALLY  
CONSCIOUS  
STREETWEAR

**FB1901** Unisex  
Original T-Shirt



P28



**READY TO DYE** is a new concept for independent brands and the imprint market – garments constructed ready to accept 'local' dyeing whilst retaining size and shape.





# 36 SWEATS

JH230

**JustHoods**  
AWDis



NEW

## JH230 AWDIs Organic Sweatshirt

80% organic cotton/20% recycled polyester.\*  
Soft cotton faced fabric. Brushed back fleece. Drop shoulder style. Fashion fit. Ribbed collar, cuffs and hem. Taped neck. Twin needle stitching. Tear out label.

Weight: 280 gsm

Size:	XS	S	M	L	XL	XXL
Chest (to fit):	34	36	40	44	48	52

\*Heather grey 75% organic cotton/25% recycled polyester.



03574

**SOL'S**  
the fair spirit



NEW

## 03574 SOL'S Unisex Comet Organic Sweatshirt

80% OCS certified organic cotton/20% recycled polyester. Cotton faced fabric. Unbrushed fleece. Drop shoulder style. 2x2 ribbed collar, cuffs and hem. Herringbone taped neck. Half moon back yoke. Unbranded size label at neckline.

Weight: 280 gsm

Size:	XS	S	M	L	XL	XXL	3XL	4XL
Chest (to fit):	35/36	36/38	38/40	41/42	43/44	45/47	47/49	50/52



## EA030 Ecologie Unisex Banff Regen Sweatshirt

70% regenerated cotton/30% recycled polyester.  
French terry. Drop shoulder style. Fashion fit. Ribbed collar, cuffs and hem. Taped neck. Angled cuff detail. Unbranded size label at neckline. Regenerated cotton is made from 100% pre-consumer waste.

Weight: 260 gsm

Size:	XS	S	M	L	XL	XXL
Chest (to fit):	32	36	40	44	48	52



## M194 Mantis The Sweatshirt

80% OCS certified organic cotton/20% recycled PET french terry.\* Drop shoulder style. Ribbed collar, cuffs and hem. Herringbone taped neck. Locker patch. Tear out label.

Weight: 280 gsm

Size:	XS	S	M	L	XL	XXL
Chest (to fit):	33/35	36/38	39/41	42/44	45/47	48/49



\*Heather marl 71% organic cotton/21% recycled PET french terry/8% viscose.



EA030

**écologie.**  
by AWDIs



M194

**mantis**







208M

### 208M Russell Pure Organic Reversible Sweatshirt

100% certified organic ringspun combed cotton. Ultra soft face with unbrushed terry twill reverse. Drop shoulder style. Ribbed collar, cuffs and hem with Lycra®. Taped neck and shoulders. Overlock stitched seams. Leather-look patch above left hem. Unbranded size label on waistband which tucks away into small pocket.

Weight: 300 gsm

Size:	XS	S	M	L	XL	XXL	3XL
Chest (to fit):	34/36	36/38	38/40	40/42	42/44	44/46	46/48



FB1902

### FB1902 Original FNB Unisex Organic Sweatshirt

80% certified organic combed cotton/20% recycled polyester.\* Pre-shrunk. Brushed back fleece. Drop shoulder style. Ribbed collar, cuffs and hem. Taped neck. Tear out label.

Weight: 320 gsm

Size:	XS	S	M	L	XL	XXL	3XL
Chest (to fit):	35/36	37/38	39/40	41/42	43/44	45/47	48/50

\*Ready To Dye 100% cotton.



### M76 Superstar by Mantis Raglan Sweatshirt

80% OCS certified organic cotton/20% polyester. Brushed back fleece. Stitched V detail at neck. Ribbed collar, cuffs, hem and side panels. Double taping detail at back neck. Tear out label.

Weight: 330 gsm

Size:	S	M	L	XL	XXL
Chest (to fit):	36/38	39/41	42/44	45/47	48/49



### M128 Mantis Flash Dance Sweatshirt

Black and white 80% OCS certified organic cotton/20% recycled PET french terry. Heather marl 85% OCS certified cotton/8% recycled PET french terry/7% viscose. Loose fit. Raglan sleeves. Wide, off the shoulder raw edge neckline. 3/4 length roll-up sleeves. Straight open hem. Tear out label.

Weight: 300 gsm

Size:	S	M	L	XL
Ladies size:	8/10	12	14	16/18
Chest (to fit):	32/34	35/37	38/40	41/43



M76



M128

## 38 SWEATS

03567

SOL'S  
the fair spirit

NEW



## 03567 SOL'S

## Unisex Space Organic Raglan Sweatshirt

80% OCS certified organic cotton/20% recycled polyester.  
Cotton faced fabric. Brushed back fleece.  
2x2 cotton/elastane ribbed collar, cuffs and hem. Taped neck.  
Half moon back yoke. Unbranded size label at neckline.

Weight: 280 gsm



Size:	XXS	XS	S	M	L	XL	XXL	3XL
Chest (to fit):	32/34	35/36	36/38	38/40	41/42	43/44	45/47	47/49

KB480 Kariban  
Organic Raglan Sweatshirt

80% OCS certified organic cotton/20% polyester.  
Ribbed collar, cuffs and hem. Taped neck.  
Stitched V detail at front neck.  
Unbranded size label at neckline.

Weight: 300 gsm



Size:	S	M	L	XL	XXL
Chest (to fit):	34/36	38	40	42	44/46



Sedex



KB480

KARIBAN



KB481 Online



03568

SOL'S  
the fair spirit

NEW



## 03568 SOL'S

## Unisex Stellar Organic Hoodie

80% OCS certified organic cotton/20% recycled polyester.  
Cotton faced fabric. Brushed back fleece.  
Raglan sleeves. Lined hood with self colour round drawcord. Metal eyelets and drawcord tips. Taped neck. Half moon back yoke.  
Front pouch pocket. 2x2 cotton/elastane ribbed cuffs and hem. Unbranded size label at neckline.

Weight: 280 gsm



Size:	XS	S	M	L	XL	XXL	3XL
Chest (to fit):	35/36	36/38	38/40	41/42	43/44	45/47	47/49

KB482 Kariban  
Organic Hoodie

80% OCS certified organic cotton/20% polyester.  
Brushed back fleece. Drop shoulder style.  
Double fabric hood with ribbed edge. Self colour drawcord.  
Taped neck. Stitched V detail at front neck. Ear phone access on neck and front pocket. Two front pockets with piping. Deep ribbed cuffs and hem.  
Unbranded size label at neckline.

Weight: 300 gsm



Size:	S	M	L	XL	XXL
Chest (to fit):	34/36	38	40	42	44/46



Sedex



KB482

KARIBAN



KB483 Online







JH201

Just Hoods  
by AWDiS

JH201B P50

NEW

**JH201 AWDiS  
Organic Hoodie**

80% organic cotton/20% recycled polyester.\*  
Soft cotton faced fabric. Brushed back fleece.  
Drop shoulder style. Double fabric hood with  
self colour drawcord. Front pouch pocket.  
Ribbed cuffs and hem. Twin needle stitching.  
Tear out label.

Weight: 280 gsm

Size:	XS	S	M	L
Chest (to fit):	34	36	40	44
Size:	XL	XXL	3XL	
Chest (to fit):	48	52	56	

\*Heather grey 75% organic cotton/25% recycled polyester.



Sedex { AN APPROVED VEGAN }

**FB1904 Original FNB  
Unisex Organic Hoodie**

80% certified organic combed cotton/  
20% recycled polyester.\* Pre-shrunk.  
Drop shoulder style. Two panel lined hood with self colour drawcord. Metal eyelets and  
drawcord tips. Ready to dye has polyester stitched drawcord tips in gunmetal colour.  
Taped neck. Front pouch pocket. Ribbed cuffs and hem. Tear out label.

Weight: 320 gsm

Size:	XS	S	M	L	XL	XXL	3XL
Chest (to fit):	35/36	37/38	39/40	41/42	43/44	45/47	48/50

\*Ready To Dye 100% cotton.



Sedex



FB1904

ORIGINAL  
FNBécologie.  
by AWDiS**EA040 Ecologie  
Unisex Lusaka Regen Hoodie**

70% regenerated cotton/30% recycled polyester.  
French terry. Drop shoulder style. Fashion fit.  
Hood with no drawcord. Taped neck. Front pouch  
pocket. Ribbed angled cuffs and hem.  
Unbranded size label at neckline.  
Regenerated cotton is made from 100%  
pre-consumer waste.

Weight: 260 gsm

Size:	XS	S	M	L	XL	XXL
Chest (to fit):	32	36	40	44	48	52



Sedex

{ AN APPROVED VEGAN }



EA040

écologie.  
by AWDiS**EA041 Ecologie  
Corcovado Organic Hoodie**

100% organic cotton.\*  
Soft peached fabric with brushed inner.  
Drop shoulder style. Fashion fit.  
Hood with no drawcord. Taped neck.  
Front pouch pocket. Ribbed angled cuffs  
and hem. Unbranded size label.

Weight: 270 gsm

Size:	XS	S	M	L	XL	XXL
Chest (to fit):	32	36	40	44	48	52

\*Heather grey 90% organic cotton/10% viscose.



{ AN APPROVED VEGAN }



EA041

mantis

**M142 Mantis  
Ladies Hoodie Dress**

80% OCS certified organic cotton/20% recycled  
PET french terry.  
Drop shoulder style. Loose fit. Lightweight.  
Three panel unlined hood with extra long  
drawcord. Long length. Deep ribbed cuffs with  
thumbholes. Side vents. Twin needle hem.  
Tear out label.

Weight: 150 gsm

Size:	S	M	L	XL
Ladies size:	8/10	12	14	16/18
Chest (to fit):	32/34	35/37	38/40	41/43



{ AN APPROVED VEGAN }



M142

DIGITAL PRINTING

# RTP

APPAREL

PICK.  
PRINT.  
CURE.

**STOP PRE-TREATING. START PRINTING.**  
The first and only pre-treated organic cotton  
t-shirts ready to be printed.\*



03270 RTP Apparel  
Tempo 185 Organic T-Shirt  
P28

03257 RTP Apparel Ladies  
Tempo 185 Organic T-Shirt  
P31



**READY TO PRINT**

\*T-shirts sold without decoration



by **SOLO**  
Group





AM01

ANTHEM®



AM03 P41

NEW

**AM01 Anthem Organic Hoodie**

80% organic cotton/20% recycled polyester.\*  
Soft cotton faced fabric.  
Brushed back fleece. Drop shoulder style.  
Double fabric hood with self colour drawcord.  
Metal eyelets and drawcord tips.  
Front pouch pocket. Ribbed cuffs and hem.  
Twin needle stitching. Tear out label.

Weight: 320 gsm

Size:	S	M	L
Chest (to fit):	36	40	44
Size:	XL	XXL	3XL
Chest (to fit):	48	52	56

\*Grey marl 73% organic cotton/21% recycled polyester/6% viscose.

\*\*Ash 78% organic cotton/21% recycled polyester/1% viscose.



Sedex { AN-APPROVED VEGAN }

**M140 Mantis Ladies Cropped Hoodie**

80% OCS certified organic cotton/20% recycled PET french terry.\*  
Drop shoulder style. Loose fit. Three panel unlined hood with extra long drawcord.  
Cropped length. Deep ribbed cuffs with thumbholes. Twin needle hem.  
Tear out label.

Weight: 300 gsm

Size:	XS	S	M	L	XL
Ladies size:	8	8/10	12	14	16/18
Chest (to fit):	30/32	32/34	35/37	38/40	41/43

\*Heather marl 71% organic cotton/21% recycled polyester/8% viscose.



Sedex { AN-APPROVED VEGAN } ORGANIC BLENDING

M140

mantis



JH250

JustHoods®  
AWDiS

NEW

**JH250 AWDiS Organic Zoodie**

80% organic cotton/20% recycled polyester.\*  
Soft cotton faced fabric. Brushed back fleece. Drop shoulder style.  
Double fabric hood with self colour drawcord. Full length metal YKK zip.  
Front pouch pockets. Ribbed cuffs and hem. Twin needle stitching.  
Tear out label.

Weight: 280 gsm

Size:	XS	S	M	L	XL	XXL
Chest (to fit):	34	36	40	44	48	52

\*Heather grey 75% organic cotton/25% recycled polyester.



Sedex { AN-APPROVED VEGAN }

**AM03 Anthem Ladies Organic Hoodie**

80% organic cotton/20% recycled polyester.\*  
Soft cotton faced fabric. Brushed back fleece. Drop shoulder style.  
Double fabric hood with self colour drawcord. Metal eyelets and drawcord tips. Front pouch pocket. Ribbed cuffs and hem. Twin needle stitching. Tear out label.

Weight: 320 gsm

Size:	XS	S	M	L	XL	XXL
Ladies size:	8	10	12	14	16	18

\*Grey marl 73% organic cotton/21% recycled polyester/6% viscose.



Sedex { AN-APPROVED VEGAN }

AM03

ANTHEM®



AM01 P41

NEW





# A Perfect Fit For The Planet

**1.1**

kWh of energy  
conserved

**365**

g of CO<sub>2</sub>  
emissions avoided

**1.3**

m<sup>2</sup> of land farmed  
without pesticides

**Dress for a sustainable future with Mantis.**

In 2019 we switched our entire cotton production to organic, and measured the impact of everything we make. Starting with the M01 and M02 Essential Organic Ts, every Mantis and Babybugz garment will soon have a QR code on the label, allowing you to access all the data and see how your t-shirt was made.



Scan the QR code to see for yourself the positive difference you can make by switching to organic.

\*Data refers to the  
M01 Essential Organic T-Shirt P27

# mantis

[www.mantisworld.com](http://www.mantisworld.com)



EA051

écologie.  
by AWDiS

### EA051 Ecologie Unisex Okavango Regen Zoodie

70% regenerated cotton/30% recycled polyester.  
Peached finish. Brushed back fleece.  
Drop shoulder style. Hood with contrast drawcord. Taped neck.  
Full length metal zip. Front pouch pockets. Contrast ribbed cuffs  
and hem. Unbranded size label at neckline.  
Regenerated cotton is made from 100% pre-consumer waste.

Weight: 330 gsm



Size:	XS	S	M	L	XL	XXL
Chest (to fit):	32	36	40	44	48	52



Sedex { VERIFIED VEGAN }

### KB484 Kariban Organic Zip Hoodie

80% OCS certified organic cotton/20% polyester  
french terry. Brushed back fleece. Drop shoulder style.  
Double fabric hood with ribbed edge and self colour  
drawcord. Taped neck. Full length metal zip.  
Ear phone access on neck and front pocket.  
Two front pockets. Deep ribbed cuffs and hem.  
Unbranded size label at neckline.

Weight: 300 gsm



Size:	S	M	L	XL	XXL
Chest (to fit):	34/36	38	40	42	44/46



KB484

KARIBAN



KB485 Online

AM02

ANTHEM



AM04 P43

NEW

### AM02 Anthem Organic Full Zip Hoodie

80% organic cotton/20% recycled polyester.\*  
Soft cotton faced fabric. Brushed back fleece.  
Drop shoulder style. Double fabric hood with self  
colour drawcord. Metal eyelets and drawcord tips.  
Full length metal zip. Front pouch pockets.  
Ribbed cuffs and hem. Twin needle stitching. Tear out label.

Weight: 320 gsm



Size:	S	M	L	XL	XXL	3XL
Chest (to fit):	36	40	44	48	52	56



\*Grey marl 73% organic cotton/21% recycled polyester/6% viscose.

Sedex { VERIFIED VEGAN }

### AM04 Anthem Ladies Organic Full Zip Hoodie

80% organic cotton/20% recycled polyester.\*  
Soft cotton faced fabric. Brushed back fleece. Drop shoulder style.  
Double fabric hood with self colour drawcord.  
Metal eyelets and drawcord tips. Full length metal zip.  
Front pouch pockets. Ribbed cuffs and hem. Twin needle stitching. Tear out label.

Weight: 320 gsm



Size:	XS	S	M	L	XL	XXL
Ladies size:	8	10	12	14	16	18



\*Grey marl 73% organic cotton/21% recycled polyester/6% viscose.

Sedex { VERIFIED VEGAN }

AM04

ANTHEM



AM02 P43

NEW



## 44 SHIRTS

920M


**RUSSELL** SINCE 1902  
COLLECTION

**920M Russell Collection  
Tailored Long Sleeve Washed  
Oxford Shirt**

100% certified organic cotton.  
Easy care fabric.  
Garment washed.  
Button down collar with contrast inner.  
Left chest pocket. Pearlised buttons.  
Removable accessory loop.  
Rounded two button adjustable cuffs with  
contrast inner. Curved hem.

Weight: 140 gsm

Size:	S	M	L	XL
Collar:	14.5/15	15.5	16/16.5	17/17.5
Chest (to fit):	36/38	38/40	40/42	42/44
Size:	XXL	3XL	4XL	
Collar:	18	18.5/19	19.5	
Chest (to fit):	44/46	46/48	48/50	


**PREMIER**
**PR113 Premier  
Fairtrade Certified Organic Cotton  
Denim Bib Apron**

100% Fairtrade certified organic cotton.  
Neck tie with gun metal adjustable  
buckle - brown denim has antique brass buckle.  
Two front pockets with contrast stitching.  
Self fabric 107cm ties.  
Width 72cm.  
Length 80cm.  
Domestic wash 30°C.

Weight: 245 gsm



Sedex



PR113



NEW

PR247



PR347 P44

**PREMIER**
**PR247 Premier  
Organic Fairtrade Certified Long  
Sleeve Chambray Shirt**

100% Fairtrade certified organic cotton.  
Modern fit.  
Button down collar on the underside.  
Button on back of the collar to secure an  
apron neatly in place.  
Two chest button pockets.  
Pen holder left chest pocket.  
Two button adjustable cuffs with button  
on cuff gauntlet. Curved hem.

Weight: 160 gsm

Size:	S	M	L	XL	XXL	3XL
Chest (to fit):	34	38	42	46	50	54



Sedex


**PREMIER**
**PR120 Premier  
Recycled and Organic Fairtrade  
Certified Bib Apron**

65% recycled polyester/35% organic cotton.  
Easy care fabric.  
Neck tie with black recycled adjustable buckle.  
Two side pockets with slanted entry.  
Self fabric 90cm ties.  
Width 72cm.  
Length 86cm.  
Domestic wash 40°C.

Weight: 270 gsm



Sedex



PR120



NEW

PR347



PR247 P44

**PREMIER**
**PR347 Premier  
Ladies Organic Fairtrade Certified  
Long Sleeve Chambray Shirt**

100% Fairtrade certified organic cotton.  
Modern fit.  
Button down collar on the underside.  
Button on back of the collar to secure an  
apron neatly in place. Two chest button pockets.  
Pen holder left chest pocket. Bust and back darts.  
Two button adjustable cuffs with button on cuff  
gauntlet. Curved hem.

Weight: 160 gsm

Size:	XS	S	M	L	XL	XXL	3XL
Ladies size:	8	10	12	14	16	18	20
Chest (to fit):	33	35	37	39	41	43	45



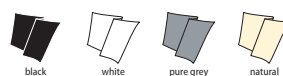
Sedex


**Westford Mill**
**W710 Westford Mill  
Organic Cotton Tea Towel**

100% OCS certified organic cotton.  
Superior print surface.  
Hanging loop.  
Tear out label.

Weight: 170 gsm

Dimensions: 50 x 70 cm



Tear Out



W710



NEW



DE100 [DP200]

Dennys  
LONDON®


### DE100 Dennys Polyester Bib Apron

Solid colours 100% recycled polyester.  
Stripe colours 100% polyester.  
Quick drying and crease resistant. Self fabric neck tie. Solid colours have a sliding adjustable buckle. Self fabric ties. Width 71cm. Length 91cm. Industrial or domestic wash 65°C. Branded tab on left.

Weight: 195 gsm



### DE105 Dennys Polyester Waist Apron

100% recycled polyester.  
Crease resistant.  
Self fabric ties.  
Width 71cm.  
Length 60cm.  
Industrial or domestic wash 65°C.  
Branded tab on left.

Weight: 195 gsm



DE105 [DP100]

Dennys  
LONDON®


DE101 [DP210]

Dennys  
LONDON®

### DE101 Dennys Polyester Bib Apron with Pocket

100% recycled polyester.  
Self fabric neck tie with sliding, adjustable buckle.  
Front pocket. Self fabric ties. Width 71cm. Length 91cm. Industrial or domestic wash 65°C. Branded tab on left.

Weight: 195 gsm



DE111 [DP97]

Dennys  
LONDON®

### DE111 Dennys Tabard with Pocket

100% recycled polyester.  
Large patch pocket. Elasticated stud side tabs.  
Self fabric bound edges. Domestic wash 65°C.  
Branding on left side tab.

Weight: 200 gsm

Size:	S/M	L/XL
Chest (to fit):	34	42
Length (cm):	74	76



DE106 [DP110]

Dennys  
LONDON®

### DE106 Dennys Polyester Waist Apron with Pocket

100% recycled polyester.  
Crease resistant. Front pocket. Self fabric ties.  
Width 71cm. Length 61cm. Industrial or domestic wash 65°C. Branded tab on left.

Weight: 195 gsm



## 46 KNITWEAR

EA060

écologie.  
by AWDiS



### EA060 Ecologie Unisex Arenal Regen Crew Neck Sweater

70% regenerated cotton/30% recycled polyester.  
12 gauge.  
Fashion fit.  
Set in sleeves.  
Rolled collar, cuffs and hem.  
Unbranded size label at neckline.  
Regenerated cotton is made from 100% pre-consumer waste.



Size:	XS	S	M	L	XL	XXL
Chest (to fit):	32	36	40	44	48	52

Sedex

AN APPROVED  
VEGAN

No Label

EA080

écologie.  
by AWDiS



### EA080 Ecologie Unisex Iguazu Regen Knitted Hoodie

70% regenerated cotton/30% recycled polyester.  
7 gauge. Chunky tuck stitch knit.  
Set in sleeves. Two tone marl effect.  
Fashion fit. Hood with drawcord.  
Ribbed cuffs and hem.  
Unbranded size label at neckline.  
Regenerated cotton is made from 100% pre-consumer waste.



Size:	XS	S	M	L	XL	XXL
Chest (to fit):	32	36	40	44	48	52

Sedex

AN APPROVED  
VEGAN

No Label

### EA062 Ecologie Unisex Taroko Regen Crew Neck Sweater

70% regenerated cotton/30% recycled polyester.  
7 gauge.  
Seed stitch. Fashion fit.  
Set in sleeves.  
Ribbed collar, cuffs and hem.  
Unbranded size label.  
Regenerated cotton is made from 100% pre-consumer waste.



Size:	XS	S	M	L	XL	XXL
Chest (to fit):	32	36	40	44	48	52

AN APPROVED  
VEGAN

No Label

### EA061 Ecologie Unisex Wakhan Zip Neck Regen Sweater

70% regenerated cotton/30% recycled polyester.  
7 gauge. Fashion fit. Set in sleeves.  
Ribbed collar, cuffs and hem.  
Unbranded size label at neckline.  
Regenerated cotton is made from 100% pre-consumer waste.



Size:	XS	S	M	L	XL	XXL
Chest (to fit):	32	36	40	44	48	52

Sedex

AN APPROVED  
VEGAN

No Label

EA062

écologie.  
by AWDiS



EA061

écologie.  
by AWDiS





03256

RTP®  
APPAREL •**03256 RTP Apparel  
Kids Tempo 145 Organic T-Shirt**

100% OCS certified organic ringspun semi-combed cotton.\* This style can only be ordered in packs of 10 or cartons of 50. Singles cannot be ordered. Packs and cartons are non-returnable. Pre-treated front body area ready for DTG - requires gentle handling (do not rub or stretch). Enzyme washed. Modern fit. Ribbed collar. Taped neck. Side seams. Twin needle stitching. Unbranded size label at neckline. To be stored in a dust-free environment, in temperatures lower than 30°C. Please note - this item runs small in comparison to some other brands. Also available in mens 03254 and ladies 03255.

Weight: 145 gsm

Age:	4	6	8	10	12
Height (cm):	96-104	106-116	118-128	130-140	142-152
Chest (to fit):	20/21	22/23	24/25	26/28	29/30
Print area (cm):	22 x 19	25 x 21	28 x 23	32 x 25	35 x 26

Decoration for illustration purposes only.  
\*Grey melange 85% cotton/15% viscose.



NEW



03261

RTP®  
APPAREL •**03261 RTP Apparel  
Kids Cosmic 155 Organic T-Shirt**

100% OCS certified organic combed ringspun cotton.\* This style can only be ordered in packs of 5 or cartons of 50. Singles cannot be ordered. Packs and cartons are non-returnable. Pre-treated front body area ready for DTG - requires gentle handling (do not rub or stretch). Enzyme washed. Modern fit. Ribbed collar. Taped neck. Side seams. Twin needle stitching. Unbranded size label at neckline. To be stored in a dust-free environment, in temperatures lower than 30°C. Please note - this item runs small in comparison to some other brands. Also available in mens 03259 and ladies 03260.

Weight: 155 gsm

Age:	4	6	8	10	12
Height (cm):	96-104	106-116	118-128	130-140	142-152
Chest (to fit):	20/21	22/23	24/25	26/28	29/30
Print area (cm):	22 x 19	25 x 21	28 x 23	32 x 25	35 x 26

Decoration for illustration purposes only.  
\*Grey melange 85% cotton/15% viscose.



NEW



03258

RTP®  
APPAREL •**03258 RTP Apparel  
Kids Tempo 185 Organic T-Shirt**

100% OCS certified organic ringspun cotton.\* This style can only be ordered in packs of 10 or cartons of 50. Singles cannot be ordered. Packs and cartons are non-returnable. Pre-treated front body area ready for DTG - requires gentle handling (do not rub or stretch). Enzyme washed. Modern fit. Ribbed collar. Taped neck. Side seams. Twin needle stitching. Unbranded size label at neckline. To be stored in a dust-free environment, in temperatures lower than 30°C. Please note - this item runs small in comparison to some other brands. Also available in mens 03270 and ladies 03257.

Weight: 185 gsm

Age:	4	6	8	10	12
Height (cm):	96-104	106-116	118-128	130-140	142-152
Chest (to fit):	20/21	22/23	24/25	26/28	29/30
Print area (cm):	22 x 19	25 x 21	28 x 23	32 x 25	35 x 26

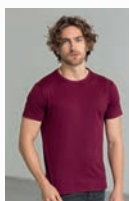
Decoration for illustration purposes only.  
\*Grey melange 85% cotton/15% viscose.



NEW



EA001B

écologie.  
by AWDiS

EA001 P26



EA001F P29

NEW

**EA001B Ecologie  
Kids Cascades Organic T-Shirt**

100% organic cotton.  
Single jersey. Fashion fit. Ribbed collar. Taped neck. Side seams. Twin needle sleeves and hem. Unbranded size label at neckline.

Weight: 150 gsm

Size:	XXS	XS	S	M	L	XL
Age:	1-2	3-4	5-6	7-8	9-11	12-13
Chest (to fit):	24	26	28	30	32	34



Sedex®

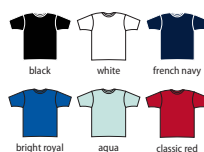
{ AN APPAREL  
VEGAN }**108B Russell  
Kids Pure Organic T-Shirt**

100% certified organic ringspun combed cotton.  
Narrow ribbed collar with Lycra®. Taped neck and shoulders. Side seams. Twin needle sleeves and hem. Unbranded size label at neckline.

Weight: 160 gsm

Age:	3-4	5-6	7-8	9-10	11-12	13-14*
Height (cm):	104	116	128	140	152	164
Chest (to fit):	22/25	25/28	28/30	30/32	32/34	34/36

\*13-14 subject to VAT.



108B

R  
russell  
pure organic

108M P28



108F P31

NEW

## LW620T

**LW620T Larkwood  
Baby/Toddler Organic T-Shirt**

100% organic cotton.  
Single jersey.  
Ribbed neck.  
Twin needle stitching.  
Tag free.

Weight: 160 gsm

Age:	0-3m	3-6m	6-12m
Height (cm):	62	62/68	68/80
Age:	12-18m	18-24m	24-36m
Height (cm):	80/86	86/92	92/98



Sedex



## BZ57

**BABYBUGZ****BZ57 BabyBugz  
Baby Dips T-Shirt**

100% OCS certified organic combed  
ring-spun cotton.  
Dip dyed design.  
Nickel free popper closure on left shoulder.  
Coverseamed collar, sleeves and hem.  
Tear out label.

Weight: 200 gsm

Age:	0-3m	3-6m	6-12m
Height (cm):	56-60	60-66	66-76
Age:	12-18m	18-24m	2-3y
Height (cm):	76-86	86-93	93-98



## BZ43

**BABYBUGZ****BZ43 BabyBugz  
Baby Long Sleeve Baseball T-Shirt**

100% OCS certified organic cotton.  
Contrast collar.  
Contrast raglan sleeves.  
Curved hem with contrast overlock stitching.  
Tear out label.

Weight: 150 gsm

Age:	6-12m	12-18m	18-24m
Height (cm):	66-76	76-86	86-93



## BZ02

**BABYBUGZ****BZ02 BabyBugz  
Baby T-Shirt**

100% OCS certified organic cotton.\*  
Ribbed collar.  
Two self colour popper closure on  
left shoulder. Side seams.  
Coverseam stitched cuffs and hem.  
Tear out label.

Weight: 200 gsm

Age:	0-3m	3-6m	6-12m
Height (cm):	56-60	60-66	66-76
Age:	12-18m	18-24m	2-3y
Height (cm):	76-86	86-93	93-98

\*Bubble gum pink, dusty blue, mint, nautical navy, orange, powder pink, red and soft yellow 100% standard cotton. \*\*Charcoal melange, heather blue and mocha 60% organic cotton/40% polyester. ▲Heather marl 85% organic cotton/15% polyester. ■Available in age 2-3.

**BZ11 BabyBugz  
Baby Long Sleeve T-Shirt**

100% OCS certified organic combed cotton.\*  
Ribbed collar. Two self colour popper  
closure on left shoulder.  
Coverseam stitched cuffs and hem.

Weight: 200 gsm

Age:	3-6m	6-12m	12-18m	18-24m
Height (cm):	60-66	66-76	76-86	86-93

\*Heather marl 85% organic cotton/15% viscose.



## BZ11

**BABYBUGZ**





BZ52

BABYBUGZ

### BZ52 BabyBugz Baby Breton Long Sleeve T-Shirt

100% OCS certified organic combed ringspun cotton.  
Yarn dyed stripes. Soft stretch fabric.  
Nickel free navy shoulder poppers.  
Side vents. Drop tail. Twin needle stitching.  
Tear out label.

Weight: 200 gsm

Age:	3-6m	6-12m	12-18m	18-24m
Height (cm):	60-66	66-76	76-86	86-93



white/naval navy


PETA - APPROVED  
VEGAN


Tear Out

### BZ47 BabyBugz Baby Striped Hooded T-Shirt

100% OCS certified organic cotton.\*  
Yarn dyed narrow stripes. Three panel double fabric hood.  
Front popper closure. Straight hem with side vents.  
Twin needle sleeves and hem. Tear out label.

Weight: 200 gsm

Age:	3-6m	6-12m	12-18m
Height (cm):	60-66	66-76	76-86

\*White/heather marl 92% organic cotton/8% viscose.


white/  
heather marl\*

white/  
naval navy

PETA - APPROVED  
VEGAN


Tear Out



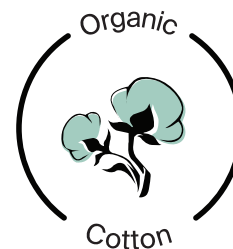
BZ47

BABYBUGZ

écologie.  
by AWDiS

NEW  
FOR  
2021


### EA001B Kids Cascades Organic T-Shirt / XXS-XL P47



Our 100% Organic Cotton garments have a super soft handfeel, guaranteeing quality while ensuring minimal impact on the environment.


PETA - APPROVED  
VEGAN



BZ31



BABYBUGZ

**BZ31 BabyBugz Baby Sweatshirt**

80% OCS certified organic cotton/20% polyester.\* Ribbed collar and cuffs. Stitched V detail at neck. Locker patch. Two self colour poppers on left shoulder. Side vents. Drop tail. Tear out label.

Weight: 280 gsm

Age:	6-12m	12-18m	18-24m
Height (cm):	66-76	76-86	86-93

\*Heather marl 71% organic cotton/21% recycled PET/8% viscose.



BZ32



BABYBUGZ

**BZ32 BabyBugz Baby Hoodie**

80% OCS certified organic cotton/20% polyester.\* Brushed back fleece. Single layer hood with mock natural colour drawcord. Natural herringbone taped neck and side vents. Full length zip. Front pouch pockets. Open cuffs and hem. Tear out label.

Weight: 250 gsm

Age:	6-12m	12-18m	18-24m
Height (cm):	66-76	76-86	86-93
Age:	2-3y	4-5y	
Height (cm):	93-98	104-110	

\*Heather marl 71% organic cotton/21% recycled PET/8% viscose.



BZ53



BABYBUGZ

**BZ53 BabyBugz Baby Rocks Denim Jacket**

100% OCS certified organic cotton. Nickel free front popper closure. Two chest pockets. Popper closure on cuffs. Tabs with poppers on rear hem. Jean style stitching. Tear out label.

Weight: 305 gsm

Age:	3-6m	6-12m	12-18m
Height (cm):	60-66	66-76	76-86
Age:	18-24m	2-3y	4-5y
Height (cm):	86-93	93-98	104-110



JH201B

JustHoods

AWDis



JH201 P39



NEW

JH201B AWDIs

**Kids Organic Hoodie**

80% organic cotton/20% recycled polyester.\* Soft cotton faced fabric. Brushed back fleece. Drop shoulder style. Double fabric hood. No drawcords to comply with EU regulations. Front pouch pocket. Ribbed cuffs and hem. Twin needle stitching. Tear out label.

Weight: 280 gsm

Size:	XXS	XS	S	M	L	XL
Age:	1-2	3-4	5-6	7-8	9-11	12-13
Chest (to fit):	24	26	28	30	32	34

\*Heather grey 75% organic cotton/25% recycled polyester.



BZ54 BabyBugz

**Baby Rocks Denim Trousers**

100% OCS certified organic cotton. Elasticated waistband. Stitched mock pockets and fly. Drop crotch. Straight hems. Tear out label.

Weight: 305 gsm

Age:	3-6m	6-12m	12-18m	18-24m	2-3y
Height (cm):	60-66	66-76	76-86	86-93	93-98



BZ54







BZ49

BABYBUGZ

**BZ49 BabyBugz  
Baby Leggings**

100% OCS certified organic cotton.\*  
Gently elasticated waistband.  
Slight drop crotch with gusset.  
Tear out label.

Weight: 200 gsm

Age:	3-6m	6-12m	12-18m	18-24m	2-3y
Height (cm):	60-66	66-76	76-86	86-93	93-98

\*Heather marl 85% organic cotton/15% viscose.

AN APPROVED  
VEGAN

Tear Out

**BZ56 BabyBugz  
Baby Rocks Denim Dungarees**

100% OCS certified organic cotton.  
Straps with adjustable popper closure.  
High back. Popper closure on sides. Drop crotch.  
Straight hems. Jean style stitching. Tear out label.

Weight: 305 gsm

Age:	3-6m	6-12m	12-18m	18-24m	2-3y
Height (cm):	60-66	66-76	76-86	86-93	93-98

AN APPROVED  
VEGAN

Tear Out



BZ56

BABYBUGZ

BABYBUGZ

**BZ46 BabyBugz  
Baby Striped Leggings**

100% OCS certified organic cotton.\*  
Yarn dyed narrow stripes.  
Gently elasticated waistband.  
Slight drop crotch with gusset.  
Tear out label.

Weight: 200 gsm

Age:	3-6m	6-12m	12-18m
Height (cm):	60-66	66-76	76-86

\*White/heather marl 92% organic cotton/8% viscose.

white/  
heather marl\*white/  
nautical navyAN APPROVED  
VEGAN

Tear Out



BZ46

BABYBUGZ

**BZ35 BabyBugz  
Baby Organic Sleepsuit with Mitts**

100% OCS certified organic combed cotton.  
Envelope neckline.  
Built in scratch mitts.  
Self colour popper closure around legs.  
Integrated feet.  
Tear out label.

Weight: 200 gsm

Age:	0-3m	3-6m	6-12m
Height (cm):	56-60	60-66	66-76



white



natural

AN APPROVED  
VEGAN

Tear Out



BZ35

**Larkwood**  
Baby and Toddler Collection
**LW650T Larkwood  
Organic Baby Sleepsuit**

100% organic cotton.  
Single jersey.  
Self colour bound neckline.  
YKK popper closure on shoulder and around legs.  
Shaped feet.  
Tag free.

Weight: 160 gsm

Age:	Newborn	0-3m	3-6m
Height (cm):	56	62	62/68
Age:	6-12m	12-18m	
Height (cm):	68/80	80/86	



white

Sedex®

X  
No Label

LW650T

LW655T



### LW655T Larkwood Organic Baby Bodysuit

100% organic cotton.  
Single jersey.  
Envelope neckline.  
Self colour bound neckline, cuffs and leg openings.  
YKK bottom popper closure.  
Tag free.

Weight: 160 gsm

Age:	Newborn	0-3m	3-6m
Height (cm):	56	62	62/68
Age:	6-12m	12-18m	
Height (cm):	68/80	80/86	



Sedex



BZ19



### BABYBUGZ

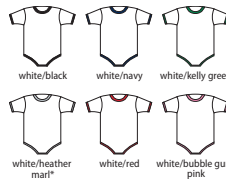
#### BZ19 BabyBugz Baby Ringer Bodysuit

100% OCS certified organic combed ring spun cotton.\*  
Contrast bound collar, cuffs and leg openings.  
Two self colour poppers on left shoulder.  
Bottom popper closure.

Weight: 200 gsm

Age:	3-6m	6-12m	12-18m
Height (cm):	60-66	66-76	76-86

\*White/heather marl 96% organic cotton/4% polyester.



{ AN APPROVED VEGAN }

BZ58



### BABYBUGZ

#### BZ58 BabyBugz Dips Bodysuit

100% OCS certified organic combed ring spun cotton. Dip dyed design.  
Bound envelope neck and sleeve ends.  
Coverseamed neck, sleeves and hem.  
Nickel free bottom popper closure.  
Tear out label.

Weight: 200 gsm

Age:	3-6m	6-12m	12-18m	18-24m
Height (cm):	60-66	66-76	76-86	86-93



{ AN APPROVED VEGAN }

BZ10

### BABYBUGZ



#### BZ10 BabyBugz Baby Bodysuit

100% OCS certified organic cotton.\*  
Envelope neckline.  
Self fabric bound neckline, cuffs and leg openings.  
Bottom popper closure.

Weight: 200 gsm

Age:	0-3m	3-6m	6-12m
Height (cm):	56-60	60-66	66-76
Age:	12-18m	18-24m	
Height (cm):	76-86	86-93	

\*Bubble gum pink, dusty blue, kelly green, nautical navy, powder pink, red and soft yellow 100% standard cotton. \*\*Charcoal melange, heather blue and mocha 60% organic cotton/40% polyester. \*Heather marl 85% organic cotton/15% polyester. \*Available in 18-24m.



{ AN APPROVED VEGAN }



#### BZ30 BabyBugz Baby Organic Long Sleeve Bodysuit

100% OCS certified organic combed ring spun cotton.\*  
Envelope neckline. Bound cuffs. Bottom popper closure. Tear out label.

Weight: 200 gsm

Age:	0-3m	3-6m	6-12m	12-18m
Height (cm):	56-60	60-66	66-76	76-86

\*Heather marl 85% organic cotton/15% polyester.



{ AN APPROVED VEGAN }



BZ30

### BABYBUGZ







BZ10S

BABYBUGZ

**BZ10S BabyBugz Baby Stripy Bodysuit**

100% OCS certified organic combed ringspun cotton.\* Yarn dyed stripe. Envelope neckline. Self fabric bound neck, cuffs and leg openings. Bottom popper closure.

Weight: 200 gsm

Age:	0-3m	3-6m	6-12m	12-18m
Height (cm):	56-60	60-66	66-76	76-86

\*Light grey marl/white 97% combed cotton/3% polyester.



BZ48

BABYBUGZ

**BZ48 BabyBugz Baby Short Sleeve Striped Bodysuit**

100% OCS certified organic cotton.\* Yarn dyed narrow stripes. Envelope neckline. Popper closure around legs. Short style leg length. Tear out label.

Weight: 200 gsm

Age:	3-6m	6-12m	12-18m
Height (cm):	60-66	66-76	76-86

\*White/heather marl 92% organic cotton/8% viscose.



BZ41

BABYBUGZ

**BZ41 BabyBugz Baby Baseball Playsuit**

100% OCS certified organic cotton.\* Raglan style. Contrast neckline and sleeves. Two red poppers on front left raglan seam. Short leg length. Red popper bottom closure. Tear out label.

Weight: 200 gsm

Age:	3-6m	6-12m	12-18m
Height (cm):	60-66	66-76	76-86

\*White/heather marl 94% organic cotton/6% polyester.



BABYBUGZ

**BZ59 BabyBugz Organic Single Layer Bib**

100% OCS certified organic combed ringspun cotton. Single layer fabric. Popper closure on back neck. Bound edges. Self fabric bound edges. Tear out label.

Weight: 200 gsm

Size: One size



BZ59

NEW

BABYBUGZ

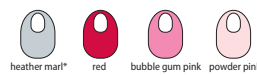
**BZ12 BabyBugz Baby Bib**

100% OCS certified organic cotton.\* Double fabric. Soft, white hook and loop closure on back neck. Self fabric bound edges.

Weight: 200 gsm

Size: One size

\*Heather marl 85% cotton/15% polyester.



BZ12

BABYBUGZ

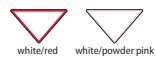
**BZ23 BabyBugz Reversible Bandana Bib**

100% OCS certified organic combed ringspun cotton.\* Reversible style. One side with contrast bound edges. Solid colour reverse. Two position popper closure on back neck. Tear out label.

Weight: 200 gsm

Size: One size

\*Heather marl 98% organic cotton/2% polyester.



BZ23

BABYBUGZ

**BZ55 BabyBugz Baby Rocks Denim Bandana Bib**

100% OCS certified organic cotton. Single layer. Adjustable nickel free popper closure. Bound edge. Jean style stitching. Tear out label.

Weight: 305 gsm

Size: One size



BZ55



## 54 HEADWEAR

BB70


**Beechfield®**  
ORIGINAL HEADWEAR

**BB70 Beechfield  
Recycled Pro-Style Cap**

100% recycled polyester.  
6 panel.  
Structured front panels.  
Stitched ventilation eyelets.  
Pre-curved peak.  
Self fabric strap with tri-glide buckle.  
Tear out label.


**Beechfield®**  
ORIGINAL HEADWEAR

**BB46 Beechfield  
Recycled Original Cuffed Beanie**

100% recycled polyester.  
Double layer knit.  
Cuffed design.  
Tear out label.



BB46



BB54


**Beechfield®**  
ORIGINAL HEADWEAR

**BB54 Beechfield  
Organic Cotton 6 Panel Cap**

100% organic cotton.  
6 panel. Mid profile.  
Structured front panel.  
Pre-curved peak.  
Self fabric strap with tri-glide buckle.  
Tear out label.


**FLEXFIT®**  
YUPOONG

**F62770C Flexfit  
Organic Cotton Cap**

98% organic cotton/2% elastane.  
6 panel.  
Mid profile.  
Stitched ventilation eyelets.  
Structured front panels.  
Pre-curved peak.  
Inner elasticated branded band.  
Authentic visor sticker.

Size: S/M L/XL



Sedex®



F62770C



BZ15


**BABYBUGZ**
**BZ15 BabyBugz  
Baby Knotted Hat**

100% OCS certified organic combed ring spun cotton.\* Deep double fabric comfort band.  
Single knot. Tear out label.

Weight: 200 gsm

\*Heather marl 85% organic cotton/  
15% polyester.

 NON-APPROVED  
VEGAN

**FLEXFIT®**  
YUPOONG

**F60890C Flexfit  
Organic Cotton Snapback Cap**

98% organic cotton/2% elastane.  
6 panel.  
High profile.  
Stitched ventilation eyelets.  
Structured front panels.  
Flat peak.  
Plastic snapback size adjuster.  
Authentic visor sticker.



Sedex®

F60890C



BZ51


**BABYBUGZ**
**BZ51 BabyBugz  
Little Hat with Ears**

100% OCS certified organic combed ring spun cotton.\*  
Narrow yarn dyed stripes.  
Soft stretch fabric.  
Wide hem band.  
Tear out label.

Weight: 200 gsm

\*Heather marl 92% organic  
cotton/8% viscose.


 NON-APPROVED  
VEGAN

**Beechfield®**  
ORIGINAL HEADWEAR

**BB60 Beechfield  
Organic Cotton Trucker Cap**

100% organic cotton front panel and peak.  
Polyester mesh rear panels.  
6 panel.  
Structured front panels.  
Pre-curved peak.  
Snapback size adjuster.  
Tear out label.



BB60





BB50

**Beechfield®**  
ORIGINAL HEADWEAR**BB50 Beechfield  
Organic Cotton Beanie**

100% organic cotton.  
Double layer knit.  
Lightweight breathable fabric.  
Cuffed design.  
Tear out label.



W825

**W825 EarthAware® Organic  
Spring Purse**

100% organic brushed cotton canvas.  
Premium heavyweight fabric.  
Zip closure.  
Capacity 0.25 litres.

Weight: 407 gsm

Dimensions: 11 x 14.5 cm  
Print area: 8 x 12 cm



EarthAware®

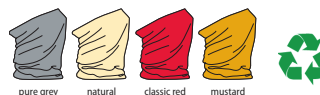


BB915

**Beechfield®**  
ORIGINAL HEADWEAR**Morf****BB915 Beechfield  
Morf® Recycled**

100% recycled polyester microfibre.  
Breathable fabric. Seam free for comfort.  
Machine washable/non iron. Multi-purpose use.

Dimensions: 50 x 25 cm



NEW



W820

**W820 EarthAware® Organic  
Spring Wristlet**

100% organic brushed cotton canvas.  
Premium heavyweight fabric. Wristlet strap (15cm long).  
Zip closure. Multi-purpose use.

Weight: 407 gsm

Size:	S	L
Dimensions (cm):	17 x 19	22 x 28
Print area (cm):	9 x 14	14 x 23
Embroidery (tubular hoop):	6	18
Capacity (litres):	1	2



BG282

**BagBase®****BG282 Recycled Belt Bag**

100% recycled 600D polyester.  
Adjustable webbing belt with clip closure.  
Cord zip pulls with reflective detail.  
Large main zip compartment.  
Rear zip pocket. Tear out label. Capacity 2.5 litres.

Dimensions: 14 x 38 x 8 cm  
Print area: 7 x 18 cm  
Embroidery: 9 tubular hoop



Tear Out



W830

**W830 EarthAware® Organic  
Accessory Pouch**

100% organic brushed cotton canvas. Premium heavyweight fabric. Self colour zip closure. Multi-purpose use.

Weight: 407 gsm

Size:	S	M	L
Dimensions (cm):	11.5 x 20	16 x 22.5	20 x 28
Print area (cm):	9 x 18	14 x 20	18 x 26
Embroidery (tubular hoop):	6	12	18
Capacity (litres):	0.5	1	2

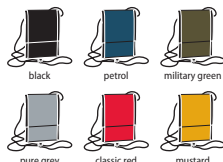


BG283

**BagBase®****BG283 Recycled Cross  
Body Pouch**

100% recycled 600D polyester.  
Adjustable neck cord. Rip-Strip™ closure.  
Small valuables pocket. Passport pocket.  
Tear out label. Capacity 0.5 litres.

Dimensions: 18 x 14 x 1 cm  
Print area: 9 x 9 cm  
Embroidery: 9 tubular hoop



Tear Out



W840

**W840 EarthAware® Organic  
Accessory Bag**

100% organic brushed cotton canvas. Premium heavyweight fabric. Self colour zip closure. Multi-purpose use.

Weight: 407 gsm



Size:	S	M	L
Dimensions (cm):	12. x 13.5 x 6	18 x 19 x 9	22.5 x 23 x 11
Print area (cm):	7 x 17	12 x 26	15 x 31
Embroidery (tubular hoop):	9	15	18
Capacity (litres):	1	3	5



NEW

## 56 BAGS

W151

**W151 Organic Cotton Mini Mesh Grocery Bag**

100% OCS certified organic cotton.  
Carry/shoulder straps (38cm long).  
Cotton panel for decoration.  
Capacity 7 litres.

**Dimensions:** 34 x 12 cm  
**Print area:** 4 x 12 cm  
**Embroidery:** 9 tubular hoop



NEW

W187

**W187 Organic Cotton Sling Tote**

100% organic cotton.  
Shoulder strap (125cm long).  
Rip-Strip™ closure.  
Capacity 8 litres.

Weight: 170 gsm

**Dimensions:** 38 x 32 cm  
**Print area:** 26 x 26 cm  
**Embroidery:** 18 tubular hoop



W261

**W261 Organic Premium Cotton Tote**

100% certified organic cotton. Carry/shoulder straps (67cm long). Capacity 10 litres.

Weight: 200 gsm

**Dimensions:** 42 x 38 cm  
**Print area:** 36 x 33 cm  
**Embroidery:** 18 tubular hoop



W801C

**W801C EarthAware® Organic Bag For Life - Contrast Handles**

100% organic cotton canvas. Premium heavyweight fabric. Contrast carry/shoulder straps (67cm long). Capacity 10 litres.

Weight: 340 gsm

**Dimensions:** 42 x 38 cm  
**Print area:** 36 x 33 cm  
**Embroidery:** 18 tubular hoop



EarthAware®

W150

**W150 Organic Cotton Mesh Grocery Bag**

100% OCS certified organic cotton.  
Carry/shoulder straps (61cm long).  
Cotton panel for decoration.  
Capacity 10 litres.

**Dimensions:** 41 x 38 cm  
**Print area:** 5 x 16 cm  
**Embroidery:** 9 tubular hoop

NEW  
COLOURS

W801

**W801 EarthAware® Organic Bag For Life**

100% organic cotton canvas.  
Carry/shoulder straps (67cm long).  
Capacity 10 litres.

Weight: 340 gsm

**Dimensions:** 42 x 38 cm  
**Print area:** 36 x 33 cm  
**Embroidery:** 18 tubular hoop



EarthAware®

W821

**W821 EarthAware® Organic Spring Tote**

100% organic brushed cotton canvas.  
Premium heavyweight fabric.  
Carry/shoulder straps (63cm long).  
Capacity 10 litres.

Weight: 407 gsm

**Dimensions:** 41 x 38 cm  
**Print area:** 35 x 33 cm  
**Embroidery:** 18 tubular hoop



EarthAware®



76900

**SOL'S**  
the fair spirit

### 76900 Organic Cotton Zen Shopper

100% organic cotton.  
Carry/shoulder straps (55cm long).  
Capacity 10 litres.

Dimensions: 42 x 37 cm



black natural



### W180 Organic Cotton Shopper

100% organic cotton.  
Carry/shoulder straps (58cm long).  
Capacity 16 litres.

Weight: 170 gsm

Dimensions: 35 x 32 x 12 cm  
Print area: 32 x 32 cm  
Embroidery: 18 tubular hoop



black white navy kelly green graphite grey natural fuchsia



W180

M195

**mantis**

### M195 Denim Tote Bag

100% OCS certified organic cotton.  
Carry/shoulder straps (65cm long).  
Cross stitching on handles.  
Folded corners.  
Double stitched top seam.  
Tear out label.  
Capacity 12 litres.

Weight: 305 gsm

Dimensions: 40 x 40 cm



denim blue

AN APPROVED  
VEGAN

Tear  
Out



### W845 EarthAware® Organic Marina Mini Tote

100% organic brushed cotton canvas.  
Premium heavyweight fabric. Cotton webbing  
carry handles (34cm long). Capacity 4 litres.

Weight: 340 gsm

Dimensions: 26 x 21 x 10 cm  
Print area: 22 x 16 cm  
Embroidery: 15 tubular hoop



black french navy pure grey natural

EarthAware®



W845



W265



### W265 Organic Premium Cotton Maxi Tote Bag

100% organic cotton. Premium cotton for  
enhanced durability. Carry/shoulder straps  
(58cm long). Superior print surface for optimal  
decoration. Capacity 18 litres.

Weight: 200 gsm

Dimensions: 39 x 35 x 13.5 cm  
Print area: 33 x 34 cm  
Embroidery: 22 tubular hoop



black white french navy bright royal graphite grey light grey natural classic red



### W850 EarthAware® Organic Marina Tote

100% organic cotton canvas. Premium heavyweight  
fabric. Cotton webbing carry/shoulder straps (60cm long).  
Natural wooden toggle closure. Capacity 20 litres.

Weight: 340 gsm

Dimensions: 34 x 34 x 17 cm  
Print area: 40 x 16 cm  
Embroidery: 18 tubular hoop



black french navy pure grey natural

EarthAware®



W850



M196

**mantis**

### M196 Denim Shopper

100% OCS certified organic cotton.  
Carry/shoulder straps (60cm long).  
Cross stitching on handles.  
Small inside pocket. Folded corners.  
Double stitched top seam.  
Tear out label. Capacity 22 litres.

Weight: 305 gsm

Dimensions: 50 x 46 cm



denim blue

AN APPROVED  
VEGAN

Tear  
Out



### W855 EarthAware® Organic Marina Tote XL

100% organic cotton canvas.  
Cotton webbing carry/shoulder straps (60cm  
long). Natural wooden toggle closure.  
Capacity 30 litres.

Weight: 340 gsm

Dimensions: 40 x 39 x 19 cm  
Print area: 52 x 30 cm  
Embroidery: 18 tubular hop



black french navy pure grey natural

EarthAware®



W855



## 58 BAGS

W118

**W118 Organic Cotton Drawcord Bag**

100% soft organic cotton.  
Self fabric double drawcord closure.

Weight: 115 gsm



Sedex



Size:	XS	S	M	L
Dimensions (cm):	15 x 10	22 x 14	32 x 25	47 x 30
Print area (cm):	9 x 8	16 x 12	26 x 22	41 x 27
Embroidery (tubular hoop):	N/A	N/A	12	18
Capacity (litres):	0.25	1	3	8

W266

**W266 Organic Premium Cotton Stuff Bag**

100% organic cotton canvas.  
Double drawcord closure.

Weight: 200 gsm



Size:	XS	S	M	L
Dimensions (cm):	20.5 x 14	34 x 23	48 x 31	61.5 x 40
Print area (cm):	16 x 12	22 x 18	28 x 25	40 x 34
Embroidery (tubular hoop):	6	12	18	18
Capacity (litres):	1	3	8	15

W812

**W812 EarthAware® Organic Sea Bag**

100% organic cotton canvas.  
Premium heavyweight fabric.  
Rope drawcord closure.  
Adjustable webbing shoulder strap.  
Multi-purpose use.  
Capacity 20 litres.

Weight: 340 gsm

Dimensions: 53 x 25 x 25 cm  
Print area: 40 x 40 cm  
Embroidery: 21 tubular hoop



EarthAware®

**BagBase®**

BG281

**BG281 Recycled Gymsac**

100% recycled 300D polyester.  
Chunky drawcord carry handles.  
Cord zip pulls with reflective detail.  
Concealed stash pocket.  
Tear out label.  
Capacity 15 litres.

Dimensions: 48 x 40 cm  
Print area: 36 x 26 cm  
Embroidery: 18 tubular hoop

Tear  
Out

W810

**W810 EarthAware® Organic Gymsac**

100% organic cotton canvas.  
Heavy rope drawcord closure.  
Capacity 13 litres.

Weight: 340 gsm

Dimensions: 47 x 37 cm  
Print area: 42 x 32 cm  
Embroidery: 18 tubular hoop



EarthAware®



W260

**W260 Organic Premium Cotton Gymsac**

100% organic cotton.  
Rope drawcord closure.  
Capacity 12 litres.

Weight: 200 gsm

Dimensions: 46 x 37 cm  
Print area: 32 x 30 cm  
Embroidery: 18 tubular hoop





BG286

**BagBase®****BG286 Recycled Roll-Top Backpack**

100% recycled 600D polyester.  
Grab handle.  
Padded adjustable shoulder straps.  
Cord zip pulls with reflective detail.  
Roll-top closure.  
Padded back and base panels.  
Padded laptop compartment.  
Front zip pocket.  
Laptop compatible up to 15.6".  
Tear out label.  
Capacity 20 litres.

**Dimensions:** 44 x 32 x 13 cm  
**Print area:** 30 x 23 cm  
**Embroidery:** 18 tubular hoop



BG285

**BagBase®****BG285 Recycled Backpack**

100% recycled 600D polyester.  
Grab handle.  
Padded adjustable shoulder straps.  
Cord zip pulls with reflective detail.  
Main zip compartment.  
Front zip pocket.  
Tear out label.  
Capacity 18 litres.

**Dimensions:** 42 x 31 x 21 cm  
**Print area:** 20 x 15 cm  
**Embroidery:** 15 tubular hoop



W185

**W185 Organic Festival Backpack**

100% organic cotton.  
Grab handle.  
Adjustable shoulder straps.  
Drawcord closure.  
Wooden buttons.  
Capacity 8 litres.

Weight: 170 gsm

**Dimensions:** 41 x 37 cm  
**Print area:** 20 x 28 cm  
**Embroidery (front):** 18 tubular hoop  
**Embroidery (top flap):** 12 flat bed hoop



BG287

**BagBase®****BG287 Recycled Cooler Backpack**

100% recycled 600D polyester.  
PEVA lining.  
Webbing carry handles.  
Padded adjustable shoulder straps.  
Fully insulated main zip compartment.  
Front zip pocket.  
Zip pulls with reflective detail.  
Tear out label.  
Capacity 16 litres.

**Dimensions:** 40 x 30 x 14 cm  
**Print area:** 17 x 24 cm  
**Embroidery:** 18 tubular hoop



NEW

W814

**W814 EarthAware® Organic Barrel Bag**

100% organic cotton canvas.  
Premium heavyweight fabric.  
Webbing carry handles.  
Main zip compartment.  
Capacity 20 litres.

Weight: 340 gsm

**Dimensions:** 25 x 50 x 25 cm  
**Print area (front):** 12 x 13 cm  
**Print area (back):** 15 x 15 cm  
**Embroidery (front):** 12 tubular hoop  
**Embroidery (back):** 18 tubular hoop



BG284

**BagBase®****BG284 Recycled Barrel Bag**

100% recycled 600D polyester.  
Webbing carry handles.  
Detachable adjustable shoulder strap.  
Cord zip pulls with reflective detail.  
Main zip compartment.  
Front zip pocket.  
Tear out label.  
Capacity 20 litres.

**Dimensions:** 25 x 50 x 25 cm  
**Print area (front):** 13 x 12 cm  
**Print area (ends):** 15 x 15 cm  
**Embroidery (front):** 12 tubular hoop  
**Embroidery (ends):** 18 tubular hoop



HONESTLY  
MADEREGATTA  
PROFESSIONALNEW SUSTAINABLE  
STYLES FOR 2021

# CHOOSE SUSTAINABLE STYLE

**RG2104**  
LADIES RECYCLED  
FLEECE JACKET  
P63

**RG2053**  
RECYCLED ECODOWN  
THERMAL JACKET  
P62

**RG2050**  
RECYCLED  
3-IN-1 JACKET  
P61





RG2051 [TRA207]

REGATTA  
PROFESSIONAL


### RG2051 Regatta Honestly Made Recycled Insulated Jacket

Recycled Isotex® 10000 polyester outer. Recycled fleece lined collar and body. Polyester lined sleeves. Thermo-Guard® lightweight insulation. Conforms to EN343 class 3:2. Waterproof with taped seams. Windproof and breathable. Concealed adjustable hood. Full length zip with chin guard and inner zip guard. Right chest zip pocket. Inner pocket. Two front zip pockets. Tear release adjustable cuffs. Drawcord hem. Cut out label. Access for decoration.

Size: XS S M L XL XXL 3XL  
Chest (to fit): 35/36 37/38 39/40 41/42 43/44 46/48 49/51



RG2052 [TRA213]

REGATTA  
PROFESSIONAL


### RG2052 Regatta Honestly Made Recycled Bomber Jacket

Recycled Isotex® 10000 polyester outer. Recycled fleece lined collar and body. Polyester lined sleeves. Thermo-Guard® lightweight insulation. Conforms to EN343 class 3:2. Waterproof with taped seams. Windproof and breathable. Concealed adjustable hood. Full length zip with chin guard and inner zip guard. Right chest zip pocket. Inner pocket. Two front zip pockets. Tear release adjustable cuffs. Elasticated hem. Cut out label. Access for decoration.

Size: XS S M L XL XXL 3XL  
Chest (to fit): 35/36 37/38 39/40 41/42 43/44 46/48 49/51



RG2052 [TRA213]

REGATTA  
PROFESSIONAL


### RG2052 Regatta Honestly Made Recycled Bomber Jacket

Recycled Isotex® 10000 polyester outer. Recycled fleece lined collar and body. Polyester lined sleeves. Thermo-Guard® lightweight insulation. Conforms to EN343 class 3:2. Waterproof with taped seams. Windproof and breathable. Concealed adjustable hood. Full length zip with chin guard and inner zip guard. Right chest zip pocket. Inner pocket. Two front zip pockets. Tear release adjustable cuffs. Elasticated hem. Cut out label. Access for decoration.

Size: XS S M L XL XXL 3XL  
Chest (to fit): 35/36 37/38 39/40 41/42 43/44 46/48 49/51



RG2050 [TRA154]

REGATTA  
PROFESSIONAL


### RG2050 Regatta Honestly Made Recycled 3-in-1 Jacket

Recycled Isotex® 10000 polyester outer. Recycled polyester taffeta lined body and sleeves. Conforms to EN343 class 3:2. Waterproof with taped seams. Windproof and breathable. Concealed adjustable hood. Full length zip with chin guard and inner zip guard. Right chest zip pocket. Inner pocket. Two front zip pockets. Tear release adjustable cuffs. Drawcord hem. Access for decoration. Removable recycled two layer soft shell jacket. Full length zip. Two front zip pockets. Open cuffs and hem. Cut out label.

Size: XS S M L XL XXL 3XL  
Chest (to fit): 35/36 37/38 39/40 41/42 43/44 46/48 49/51





## 62 REGATTA HONESTLY MADE

RG2053 [TRA423]

REGATTA  
PROFESSIONAL

NEW

**RG2053** Regatta Honestly Made  
Recycled Ecodown Thermal Jacket

Recycled polyester outer with cire finish.  
Recycled Thermo-Guard® insulation.  
Recycled polyester lining. Showerproof.  
Grown on hood with stretch bound opening.  
Full length zip with chin guard and inner zip guard.  
Two front zip pockets. Stretch bound cuffs and hem.  
Cut out label.

Size: S M L XL XXL 3XL  
Chest (to fit): 37/38 39/40 41/42 43/44 46/48 49/51

**RG2054** Regatta Honestly Made  
Recycled Insulated Bodywarmer

Recycled polyester outer with cire finish.  
Recycled Thermo-Guard® insulation.  
Recycled polyester lining.  
Showerproof.  
Full length zip with chin guard and inner zip guard.  
Two front zip pockets.  
Stretch bound armholes and hem.  
Cut out label.

Size: S M L XL XXL 3XL  
Chest (to fit): 37/38 39/40 41/42 43/44 46/48 49/51



RG2100 [TRF618]

REGATTA  
PROFESSIONAL

RG2104 P63

**RG2100** Regatta Honestly Made  
Recycled Fleece Jacket

100% recycled anti-pill Symmetry® fleece.  
Easy care and quick drying. Unlined.  
Taped neck. Full length zip. Right chest zip pocket.  
Two front zip pockets. Open cuffs and hem.  
Cut out label.

Weight: 280 gsm

Size: S M L XL XXL 3XL  
Chest (to fit): 37/38 39/40 41/42 43/44 46/48 49/51

**RG2150** Regatta Honestly Made  
Recycled Polo Shirt

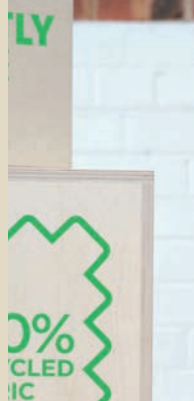
100% recycled polyester.  
Quick drying, easy care piqué fabric.  
Anti-bacterial finish.  
Self fabric collar and cuffs.  
Three self colour button placket.  
Twin needle stitching.  
Cut out label.

Weight: 130 gsm

Size: S M L XL XXL 3XL  
Chest (to fit): 37/38 39/40 41/42 43/44 46/48 49/51



RG2054 [TRA861]

REGATTA  
PROFESSIONAL

NEW



RG2150 [TRS196]

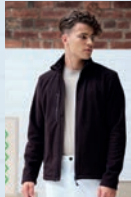
REGATTA  
PROFESSIONAL

NEW





RG2104 [TRF628]

REGATTA  
PROFESSIONAL

RG2100 P62

NEW

**RG2104** Regatta Honestly Made  
Ladies Recycled Fleece Jacket

100% recycled anti-pill Symmetry® fleece.  
Lightweight and quick drying. Unlined.  
Full length zip with chin guard.  
Right chest zip pocket. Two front zip pockets.  
Open cuffs and hem. Cut out label.

Weight: 280 gsm

Size:	S	M	L	XL	XXL	3XL
Ladies size:	10	12	14	16	18	20
Chest (to fit):	34	36	38	40	43	45

SYMMETRY  
RECYCLED**RG2102** Regatta Honestly Made  
Recycled Half Zip Fleece

100% recycled anti-pill Symmetry® fleece.  
Easy care and quick drying.  
Unlined. Taped neck.  
Zip neck with chin guard and inner zip guard.  
Open cuffs and hem. Cut out label.

Weight: 210 gsm

Size:	S	M	L	XL	XXL	3XL
Chest (to fit):	37/38	39/40	41/42	43/44	46/48	49/51

SYMMETRY  
RECYCLED

RG2102 [TRF636]

REGATTA  
PROFESSIONAL

NEW

**RG2101** Regatta Honestly Made  
Recycled Micro Fleece Jacket

100% recycled anti-pill Symmetry® fleece.  
Unlined. Lightweight and quick drying.  
Full length zip with chin guard.  
Two front zip pockets. Open cuffs and hem. Cut out label.

Weight: 210 gsm

Size:	XS	S	M	L	XL	XXL	3XL
Chest (to fit):	35/36	37/38	39/40	41/42	43/44	46/48	49/51

SYMMETRY  
RECYCLED

NEW



## 64 REGATTA HONESTLY MADE

RG2000 [TRA600]

REGATTA  
PROFESSIONAL

RG2002 P64

NEW  
COLOURS**RG2000** Regatta Honestly Made  
Recycled Soft Shell Jacket

Two layer soft shell.  
Warm backed woven recycled polyester outer.  
Showerproof and wind resistant. Quick drying.  
Full length low profile zip with chin guard and inner zip guard.  
Right chest zip pocket. Two front zip pockets.  
Open cuffs and hem. Cut out label.

Size:	S	M	L	XL	XXL	3XL
Chest (to fit):	37/38	39/40	41/42	43/44	46/48	49/51



RG2001 [TRA858]

REGATTA  
PROFESSIONAL

RG2003 P64

**RG2001** Regatta Honestly Made  
Recycled Soft Shell Bodywarmer

Two layer soft shell.  
Warm backed woven recycled polyester outer.  
Showerproof and wind resistant. Quick drying.  
Full length low profile zip with chin guard and inner zip guard.  
Right chest zip pocket. Two front zip pockets.  
Open hem. Cut out label.

Size:	S	M	L	XL	XXL	3XL
Chest (to fit):	37/38	39/40	41/42	43/44	46/48	49/51

**RG2002** Regatta Honestly Made  
Ladies Recycled Soft Shell Jacket

Two layer soft shell.  
Warm backed woven recycled polyester outer.  
Showerproof and wind resistant. Quick drying.  
Full length low profile zip with chin guard and inner zip guard.  
Right chest zip pocket. Two front zip pockets.  
Open cuffs and hem. Cut out label.

Size:	S	M	L	XL	XXL	3XL
Ladies size:	10	12	14	16	18	20
Chest (to fit):	34	36	38	40	43	45

**RG2003** Regatta Honestly Made  
Ladies Recycled Soft Shell Bodywarmer

Two layer soft shell.  
Warm backed woven recycled polyester outer.  
Showerproof and wind resistant. Quick drying.  
Full length low profile zip with chin guard and inner zip guard.  
Right chest zip pocket. Two front zip pockets.  
Open hem. Cut out label.

Size:	S	M	L	XL	XXL	3XL
Ladies size:	10	12	14	16	18	20
Chest (to fit):	34	36	38	40	43	45



RG2002 [TRA616]

REGATTA  
PROFESSIONAL

RG2000 P64

NEW



RG2003 [TRA863]

REGATTA  
PROFESSIONAL

RG2001 P64

NEW







RS502

Result  
GENUINE RECYCLED

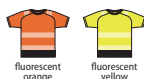
NEW

**RS502 Result Genuine Recycled Safety T-Shirt**

100% recycled polyester.  
Conforms to EN ISO 20471: 2013 + A1: 2016 class 2.  
RIS-3279-TOM class 2 (orange only).  
Quick drying and breathable.  
Black standard polyester stretch ribbed collar.  
Taped neck. Raglan sleeves with top stitch detail.  
Two printed reflective bands around the body and one on each shoulder. Contrast lower body panel.  
Tag free.

Weight: 155 gsm

Size: S/M L/XL XXL/3XL  
Chest (to fit): 38/41 44/47 50/53

SAFE-GUARD  
by ResultX  
No Label**RS501 Result Genuine Recycled Safety Polo Shirt**

100% recycled polyester.  
Conforms to EN ISO 20471: 2013 + A1: 2016 class 2.  
RIS-3279-TOM class 2 (orange only). Quick drying and breathable.  
Black standard polyester ribbed collar. Taped neck.  
Three contrast button placket. Raglan sleeves with top stitch detail.  
Two printed reflective bands around the body and one on each shoulder. Contrast lower body panel. Tag free.

Weight: 155 gsm

Size: S/M L/XL XXL/3XL  
Chest (to fit): 38/41 44/47 50/53

SAFE-GUARD  
by ResultX  
No Label

RS501

Result  
GENUINE RECYCLED

NEW



RS503

Result  
GENUINE RECYCLED

NEW

**RS503 Result Genuine Recycled Robust Safety Zip Hoodie**

100% Repreve® recycled polyester.  
Conforms to EN ISO 20471: 2013 + A1: 2016 class 2.  
RIS-3279-TOM class 2 (orange only). Windproof and breathable.  
Brushed back fleece. Drop shoulder style. Hood with drawcord. Full length black YKK zip with chin guard. Black contrast shoulder panels. Hang tag. Contrast right chest zip pocket. Two printed reflective bands around the body, sleeves and one on each shoulder. Two front zip pockets. Black standard polyester ribbed cuffs and hem. Tag free.

Weight: 280 gsm

Size: S M L XL XXL 3XL  
Chest (to fit): 38 41 44 47 50 53

SAFE-GUARD  
by Result

WP

BR

X  
No Label**RS500 Result Genuine Recycled Ripstop Padded Safety Jacket**

Recycled abrasion resistant ripstop polyester outer with TPU coating.  
Repreve® recycled polyester padding. Grey recycled polyester lining. Conforms to EN ISO 20471: 2013 + A1: 2016 class 2. RIS-3279-TOM class 2 (orange only). Navy only provides enhanced visibility.  
Showerproof, windproof and breathable. Grown on padded hood with bound opening.  
Full length YKK zip with chin guard. Two printed reflective bands around the body, sleeves and one on each shoulder. Hang tag. Inner pocket. Two front zip pockets. Shaped longer back panel. Elasticated bound cuffs and hem. Tag free. Access for decoration.

Size: S M L XL XXL 3XL  
Chest (to fit): 38 41 44 47 50 53

SAFE-GUARD  
by Result

SP

WP

BR

X  
No Label

RS500

Result  
GENUINE RECYCLED

NEW

NEW

# Result®

## GENUINE RECYCLED

1litre bottle based on size L

SUSTAINABLE EQUIVALENT TO CONVENTIONAL YARNS  
MANUFACTURED FROM POST CONSUMER RECYCLED  
PLASTIC PET BOTTLES

RECYCLED CARTONS & BIODEGRADABLE BAGS  
LESS ENERGY & WATER CONSUMPTION  
LOW IMPACT ON THE ENVIRONMENT  
END-OF-LIFE RECYCLABLE  
SOFT-FEEL FABRIC



**RS900\*\***  
THREE LAYER **PRINTABLE**  
SOFT SHELL JACKET P69



**RS903\***  
280gsm FLEECE  
POLARTHERMIC FLEECE JACKET P67



**RS901M** **PRINTABLE**  
SOFT SHELL JACKET P68



**RS901F** LADIES  
**PRINTABLE** SOFT SHELL  
JACKET P69



**RS902M** **PRINTABLE**  
SOFT SHELL  
BODYWARMER P68



**RS902F** LADIES  
**PRINTABLE** SOFT SHELL  
BODYWARMER P68



**RS904\*** POLARTHERMIC  
FLEECE BODYWARMER  
P67



**RS905\*** ZIP NECK  
MICRO FLEECE P68



**RS905B\*** KIDS ZIP NECK  
MICRO FLEECE P68



**RS906\*** HOODED MICRO  
FLEECE JACKET P67



**RS907\*** MICRO FLEECE  
JACKET P67

A BETTER CHOICE  
FOR IMPROVING THE  
ENVIRONMENT  
AND PROMOTING A  
MORE SUSTAINABLE  
**PLANET**





RS903

Result  
GENUINE RECYCLED**RS903 Result Genuine Recycled Polarthermic Fleece Jacket**

100% recycled polyester.  
Unlined. Breathable. Collar high full length YKK Natulon® eco-friendly zip.  
Raglan sleeves. Hang tag. Decorative body stitching.  
Two fleece lined front zip pockets.  
Soft bound elasticated cuffs and hem.  
Tag free.

Weight: 280 gsm



Size:	XS	S	M	L	XL	XXL	3XL	4XL
Chest (to fit):	35	38	41	44	47	50	53	56



RS907

Result  
GENUINE RECYCLED**RS907 Result Genuine Recycled Micro Fleece Jacket**

100% recycled polyester.  
Unlined. Breathable. Raglan sleeves. Hang tag.  
Full length YKK Natulon® eco-friendly zip.  
Two front zip pockets.  
Decorative body stitching.  
Soft bound elasticated cuffs and hem.  
Tag free.

Weight: 165 gsm



Size:	XS	S	M	L	XL	XXL	3XL	4XL
Chest (to fit):	35	38	41	44	47	50	53	56

**RS904 Result Genuine Recycled Polarthermic Fleece Bodywarmer**

100% recycled polyester.  
Unlined.  
Breathable.  
Collar high full length YKK Natulon® eco-friendly zip.  
Forward facing shoulder seams.  
Hang tag.  
Decorative body stitching.  
Two fleece lined front zip pockets.  
Soft bound elasticated armholes and hem.  
Tag free.

Weight: 280 gsm



Size:	XS	S	M	L	XL	XXL	3XL	4XL
Chest (to fit):	35	38	41	44	47	50	53	56

**RS906 Result Genuine Recycled Hooded Micro Fleece Jacket**

100% recycled polyester.  
Unlined. Breathable.  
Integral hood with bound opening.  
Raglan sleeves. Hang tag.  
Full length YKK Natulon® eco-friendly zip with chin guard.  
Decorative body stitching. Two front pockets.  
Soft bound elasticated cuffs and hem.  
Tag free.

Weight: 165 gsm



Size:	XS	S	M	L	XL	XXL	3XL
Chest (to fit):	35	38	41	44	47	50	53



RS904

Result  
GENUINE RECYCLED

RS906

Result  
GENUINE RECYCLED

## 68 RESULT GENUINE RECYCLED

## RS905



RS905B P68

**RS905 Result Genuine Recycled Zip Neck Micro Fleece**

100% recycled polyester.  
Unlined.  
Breathable.  
Raglan sleeves.  
Hang tag. YKK Natulon® eco-friendly zip.  
Decorative body stitching.  
Open cuffs.  
Soft bound elasticated hem.  
Tag free.

Weight: 165 gsm

<b>Size:</b>	S	M	L	XL	XXL	3XL
<b>Chest (to fit):</b>	38	41	44	47	50	53



## RS905B



RS905 P68

**RS905B Result Genuine Recycled Kids Zip Neck Micro Fleece**

100% recycled polyester.  
Unlined.  
Breathable.  
Raglan sleeves.  
Hang tag. YKK Natulon® eco-friendly zip.  
Decorative body stitching.  
Open cuffs.  
Soft bound elasticated hem.  
Tag free.

Weight: 165 gsm

<b>Age:</b>	4-6	6-8	8-10
<b>Height (cm):</b>	104/116	116/128	128/140
<b>Age:</b>	10-12	12-14*	
<b>Height (cm):</b>	140/152	152/164	

\* 12-14 subject to VAT.



## RS902F



RS902M P68

**RS902F Result Genuine Recycled Ladies Printable Soft Shell Bodywarmer**

Two layer soft shell.  
Topgreen® recycled polyester outer.  
Recycled polyester micro fleece inner layer.  
Showerproof, windproof and breathable.  
Slim ladies fit. Stand up collar.  
Full length YKK Natulon® eco-friendly zip with chin guard. Hang tag. Shaped body panels.  
Two front zip pockets. Open hem. Tag free.

<b>Size:</b>	XS	S	M	L	XL	XXL
<b>Ladies size:</b>	8	10	12	14	16	18
<b>Chest (to fit):</b>	34	36	38	40	42	44



NEW

## RS901M



RS901F P69

**RS901M Result Genuine Recycled Printable Soft Shell Jacket**

Two layer soft shell.  
Topgreen® recycled polyester outer.  
Recycled polyester micro fleece inner layer.  
Showerproof, windproof and breathable.  
Slim fashion fit.  
Stand up collar.  
Full length YKK Natulon® eco-friendly zip with chin guard.  
Hang tag. Raglan sleeves.  
Shaped body panels. Two front zip pockets.  
Soft bound cuffs. Open hem. Tag free.

<b>Size:</b>	S	M	L	XL	XXL	3XL
<b>Chest (to fit):</b>	38	41	44	47	50	53

**RS902M Result Genuine Recycled Printable Soft Shell Bodywarmer**

Two layer soft shell.  
Topgreen® recycled polyester outer.  
Recycled polyester micro fleece inner layer.  
Showerproof, windproof and breathable.  
Slim fashion fit. Stand up collar.  
Full length YKK Natulon® eco-friendly zip with chin guard.  
Hang tag. Shaped body panels.  
Two front zip pockets. Open hem. Tag free.

<b>Size:</b>	S	M	L	XL	XXL	3XL
<b>Chest (to fit):</b>	38	41	44	47	50	53



## RS902M



RS902F P68







RS901F

Result  
GENUINE RECYCLED

RS901M P68

NEW

**RS901F Result Genuine Recycled Ladies Printable Soft Shell Jacket**

Two layer soft shell.  
Topgreen® recycled polyester outer.  
Recycled polyester micro fleece inner layer.  
Showerproof, windproof and breathable.  
Ladies slim fit. Stand up collar.  
Full length YKK Natulon® eco-friendly zip with chin guard.  
Hang tag. Raglan sleeves. Shaped body panels.  
Two front zip pockets. Soft bound cuffs.  
Open hem. Tag free.

Size:	XS	S	M	L	XL	XXL
Ladies size:	8	10	12	14	16	18
Chest (to fit):	34	36	38	40	42	44



No Label

**RS900 Result Genuine Recycled Three Layer Printable Soft Shell Jacket**

Three layer soft shell.  
Topgreen® recycled polyester outer.  
Waterproof 8000mm, breathable 1000g and windproof TPU mid layer.  
Recycled polyester micro fleece inner layer.  
Stand up collar. Full length YKK zip with chin guard. Hang tag.  
Top stitched back yoke. Reflective detail on shoulders front and back.  
Right chest zip pocket. Shaped body panels. Two front zip pockets.  
Open cuffs and hem. Tag free.

Size:	XS	S	M	L	XL	XXL	3XL	4XL
Chest (to fit):	35	38	41	44	46	48	50	52



No Label

RS900

Result  
GENUINE RECYCLED

NEW

Result  
GENUINE RECYCLED**RC929 Result Genuine Recycled Woolly Ski Hat**

50% recycled acrylic/50% soft feel acrylic.  
Double thickness.  
Deep cuff.  
Tag free.



No Label



RC929

NEW

Result  
GENUINE RECYCLED**RC933 Result Genuine Recycled Thinsulate™ Beanie**

50% recycled acrylic/50% soft feel acrylic.  
3M™ Thinsulate™ insulation.  
Double thickness.  
Deep cuff.  
3M™ label sewn inside.  
Tag free.

Thinsulate  
INSULATION

No Label



RC933

NEW

Result  
GENUINE RECYCLED**RC930 Result Genuine Recycled Black Compass Beanie**

50% recycled acrylic/50% soft feel acrylic.  
Double thickness. Contrast deep cuff. Tag free.



No Label



RC930

NEW

Result  
GENUINE RECYCLED**RC927 Result Genuine Recycled Double Knit Printers Beanie**

50% recycled acrylic/50% soft feel acrylic.  
Cotton twill printers patch (10 x 5cm).  
Double thickness.  
Deep cuff.  
Tag free.



No Label



RC927

NEW

Result  
GENUINE RECYCLED**RC934 Result Genuine Recycled Thinsulate™ Printers Beanie**

50% recycled acrylic/50% soft feel acrylic.  
3M™ Thinsulate™ insulation. Double thickness.  
Deep cuff. Cotton printers patch (10 x 5cm).  
3M™ label sewn inside.  
Tag free.

Thinsulate  
INSULATION

No Label



RC934

NEW