



UNIFORMS THAT WORK FOR YOU

HOSPITALITYWEAR

COLLECTION 2018



THE ARTISAN KITCHEN

APRONS

10 new styles

CHECKERED CHOICE

Pages 46 - 55

NEXT GENERATION POLO PERFORMANCE

Pages 82 - 83

The home of HOSPITALITYWEAR

HOSPITALITYWEAR

| | |
|-------------------|---------|
| APRONS | 6 - 39 |
| TABARDS | 40 - 43 |
| SHIRTS & BLOUSES | 46 - 73 |
| WAISTCOATS | 74 - 75 |
| TIES & SCARVES | 76 - 79 |
| LONG JOHN TEES | 80 - 81 |
| POLO-SHIRTS | 82 - 89 |
| TROUSERS & CHINOS | 90 - 93 |

CHEFSWEAR

| | |
|--------------------|-----------|
| CHEF'S JACKETS | 96 - 107 |
| CHEF'S T-SHIRT | 109 |
| CHEF'S TROUSERS | 108 |
| CHEF'S ACCESSORIES | 107 - 111 |
| CHEF'S APRONS | 112 - 115 |

WHAT'S NEW

| | |
|----------------|-----|
| ETHICAL POLICY | 116 |
| SIZE GUIDE | 117 |
| WASH CARE | 118 |
| INDEX | 119 |



DISCOVER THE RANGE

The Crab Shack
FRESH SEAFOOD

STARTERS

SPICY CRAB CAKES
with chilli dipping sauce £8.90

SCALLOPS

Flower power & herb





LET'S TAKE A LOOK AT WHAT'S NEW IN OUR HOSPITALITY WARDROBE FOR 2018



THE LATEST ADDITIONS TO OUR ARTISAN COLLECTION FEATURE INSPIRATIONAL NEW DESIGNS THAT WILL TAKE HOSPITALITY FASHIONS TO THE NEXT LEVEL.

As the appetite for informal dining concepts continues, so does the demand for staff uniforms that are cool, casual and reflective of the latest high street trends.

Take a look at our **Chino inspired Aprons** that are designed with the typical style accents from your favourite pair of **Chinos**. We continue with the denim dream this year with even more quirky **Jeans-stitch Aprons** and we are very pleased to introduce a stunning 100% real **leather Apron** into our collection.

You'll discover a bigger choice of checks in the form of our '**Mulligan**', '**Ginmill**' and '**Sidehill**' **Cotton shirts** and we have brought in a completely new line of casual **roll-sleeve long john tees**.

Whilst the heat is on in the kitchen, chef and the team are going to look seriously cool in our new **Denim Chef's Jackets** with matching skull caps. We continue to be all about the colour at Premier so mix and match between colours and styles and create an inspirational uniform that raises the bar in your establishment!



VINTAGE

INSPIRED • WORKWEAR

EST. 1999

Division

'DIVISION' WAXED LOOK BIB APRON WITH FAUX LEATHER

PR136

- Waxed effect giving a water repellent surface
- Contrast fabric features for function and decoration
- Faux leather ties and neckband with adjustable buckle
- Measuring 86cm long and 72cm wide
- Can be teamed with PR134 and PR135 waxed look aprons for a great colour match
- Tinted Denim effect created by contrast coloured yarns

FABRIC

100% Cotton Denim with Acrylic 'Waxed Look' coating.
Weight: 350gsm.
Wash: 40°C domestic wash.

COLOUR

4 as listed



NEW

PREMIER
UNIFORMS THAT WORK FOR YOU



NEW



INSPIRED • WORKWEAR

EST. 1999

District

DENIM APRON

'DISTRICT' WAXED LOOK BIB APRON

PR134

- Durable waxed look finish
- Oversized jeans pocket with stitch and rivet detail
- Contrast colour ties secured in place with metal eyelets
- Fabric features including, patch pocket and cloth holder
- Measuring 86cm long and 72cm wide.

FABRIC

100% Cotton Denim with Acrylic 'Waxed Look' Coating.
Weight: 350gsm

COLOUR

2 as listed



BLACK DENIM

INDIGO DENIM

'DIVISION' WAXED LOOK WAIST APRON

PR135

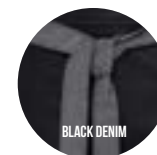
- Measuring 70cm wide and 50cm long.

FABRIC

100% Cotton Denim with Acrylic 'Waxed Look' Coating.
Weight: 350gsm

COLOUR

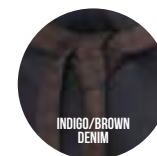
4 as listed



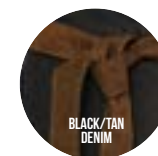
BLACK DENIM



INDIGO DENIM



INDIGO/BROWN DENIM



BLACK/TAN DENIM

VINTAGE

I • N • S • P • I • R • E • D

WORKWEAR



DOMAIN

CONTRAST DENIM APRON

'DOMAIN' CONTRAST DENIM BIB APRON

PR127

- Neckband with metal buckle fastening for height adjustment
- 36cm wide centre pocket with reverse contrast trim, including pen compartment
- Reverse contrast denim top centre pocket
- Metal eyelets secure 100cm contrast fabric ties
- 86cm long and 72cm wide
- Style match with PR128 'Domain' Waist Apron

FABRIC

70% Cotton, 30% Polyester.
Weight: 26.5gsm

COLOUR

Black Denim, Indigo Denim

'DOMAIN' CONTRAST DENIM WAIST APRON

PR128

- Mid-length waist apron measuring 50cm long by 70cm wide

FABRIC

70% Cotton, 30% Polyester.
Weight: 26.5gsm

COLOUR

Black Denim, Indigo Denim



NEW



PR127

PR128

PR126

PR125



INSPIRED • WORKWEAR



JEAN STITCH DENIM

JEANS STITCH DENIM BIB APRON

PR126

- Four pocket compartments
- Contrast stitch detail
- Adjustable buckle on neck band
- Width 72cm, length 86cm

FABRIC

70% Cotton, 30% Polyester
Weight 265gsm
Wash: 60°C domestic wash, 85°C industrial wash

COLOUR

2 as listed

JEANS STITCH DENIM WAIST APRON

PR125

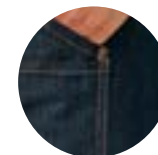
- Four pocket compartments
- Contrast stitch detail
- Antique Silver and Brass rivets
- Length 39.5cm

FABRIC

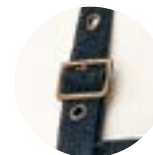
70% Cotton, 30% Polyester
Weight 265gsm
Wash: 60°C domestic wash, 85°C industrial wash

COLOUR

2 as listed



Contrast stitch detail



Adjustable buckle



'ARTISAN' LEATHER CROSS BACK APRON

PR140

- Cross over back straps and metal buckle fastening around the waist
- Two front patch pockets
- Heavyweight and durable
- Antique brass buckles and clips
- Reinforced stitching
- Length 86cm, width 72cm

FABRIC

100% Real Buffalo Leather
Weight: 330gsm

SIZES

One size

COLOUR

2 as listed



NEW



NEW

PR132

PR133



'CHINO' BIB APRON

PR132

- Full bib Apron measuring 86cm long by 72cm wide
- 'Chino' style stitched pockets with rivets
- Centre top pocket
- Neck strap with buckle and adjustable snap button fastening

FABRIC

100% Cotton Twill.
Weight: 235gsm

COLOUR

4 as listed



BLACK

STEEL

'CHINO' WAIST APRON

PR133

- Short waist Apron measuring 60cm wide by 33cm long
- 'Chino' waistband and pocket styling
- False fly detail for design
- Metal eyelets secure 90cm self fabric ties

FABRIC

100% Cotton Twill.
Weight: 235gsm

COLOUR

4 as listed

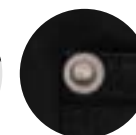


KHAKI

NAVY



Snap button fastening



Rivet detail

COTTON CANVAS

Calibre

'CALIBRE' HEAVY COTTON CANVAS BIB APRON

PR130

- Full bib Apron measuring 86cm long by 72cm wide
- Heavyweight and durable
- Large metal eyelet detail for neckband knot
- 90cm self fabric ties.

FABRIC

100% Heavy Cotton Canvas.
Weight: 320gsm

COLOUR
8 as listed

NEW

'CALIBRE' HEAVY COTTON CANVAS WAIST APRON

PR131

- Mid-length waist apron measuring 50cm long by 70cm wide
- Heavyweight and durable
- Metal eyelets secure 90cm self fabric waist ties

FABRIC

100% Heavy Cotton Canvas.
Weight: 320gsm

COLOUR
8 as listed

NEW



8

COLOURS

'COLOURS COLLECTION' BIB APRON

PR150

- Bib apron offering good coverage
- Adjustable buckle on neckband
- Self-fabric ties
- Length of 86cm and width of 72cm

FABRIC

65% Polyester, 35% Cotton.

Weight: 195gsm

Denim designs are 70% Cotton, 30% Polyester

Denim designs are 265gsm

Wash: 60°C domestic wash, 85°C industrial wash.

TIP

Great shades come to those who wait! Over time, repeated washing will give denim aprons a vintage appearance.

60 Shades OF SERVICE





COLOURS COLLECTION

'COLOURS COLLECTION' HALF WAIST APRON

PR151

- Mid length waist apron
- 90cm self-fabric ties
- Width 70cm, length 50cm
- Available in 40 colours

FABRIC

65% Polyester, 35% Cotton
Weight 195gsm
Wash: 60°C domestic wash,
85°C industrial wash

COLOUR
40 as listed

'COLOURS COLLECTION' BIB APRON WITH POCKET

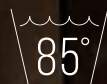
PR154

- Sliding adjustable buckle on neck band
- 90cm self-fabric ties
- Width 72cm, length 86cm
- Tablet friendly centre pocket with combined pen slot

FABRIC

65% Polyester, 35% Cotton
Weight 195gsm
Wash: 60°C domestic wash,
85°C industrial wash

COLOUR
40 as listed





COLOURS COLLECTION

'COLOURS COLLECTION' THREE POCKET WAIST APRON

PR155

- 90cm self-fabric ties
- Width 60cm, length 33cm
- Three open pockets
- Available in 28 colours

FABRIC

65% Polyester, 35% Cotton
Weight 195gsm
Wash: 60°C domestic wash,
85°C industrial wash

COLOUR

28 as listed

'COLOURS COLLECTION' LONG BAR APRON

PR158

- 90cm self-fabric ties
- Width 80cm, length 90cm
- Tablet friendly centre pocket with combined pen slot
- Popular continental style

FABRIC

65% Polyester, 35% Cotton
Weight 195gsm
Wash: 60°C domestic wash,
85°C industrial wash

COLOUR

28 as listed



85°



'COLOURS COLLECTION' 2 IN 1 APRON

PR159

- One apron worn two ways
- Bib and waist apron styles
- Pocket features on both styles
- Self-fabric ties

FABRIC

65% Polyester, 35% Cotton
Weight 195gsm
Wash: 60°C domestic wash,
85°C industrial wash

COLOUR
10 as listed

10
'COLOURS'



Can be worn as a bib apron, doubles over and neck ties are secured away to form a waist apron.

CHILD'S PLAY

'COLOURS COLLECTION' CHILDREN'S BIB APRON

PR149

- Safety release mechanism on neck band
- 50cm self-fabric ties
- Two sizes available
- Infant width 43cm, length 53cm
- Junior width 48cm, length 63cm

FABRIC

65% Polyester, 35% Cotton
Weight 195gsm
Wash: 60°C domestic wash,
85°C industrial wash

COLOUR
16 as listed



16
'COLOURS'

POLYESTER BIB APRON

PR167

- Adjustable sliding buckle on neck band
- Width 72cm, length 86cm
- 90cm self-fabric ties
- White colourway perfect for sublimation

FABRIC

100% Polyester
Weight 195gsm
Wash: 40°C domestic wash

COLOUR

4 as listed



'COLOURS COLLECTION' CONTRAST BIB APRON

PR162

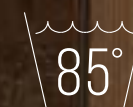
- Colour contrasting vertical panel
- Sliding adjustable buckle on neck band
- Width 72cm, length 86cm
- Two front slanted pockets

FABRIC

65% Polyester, 35% Cotton
Weight 195gsm
Wash: 60°C domestic wash,
85°C industrial wash

COLOUR

9 as listed





Fairtrade

COTTON APRONS

Premier offers a solution for businesses who promote a message of Fairtrade through their working practices. These aprons are labelled with the official Fairtrade logo which acts as a great endorsement for your brand.

FAIRTRADE BIB APRON

PR112

- Sliding adjustable buckle on neckband
- 90cm self-fabric ties
- Centre pocket
- Width 60cm, length 84cm

FABRIC

100% Certified Fairtrade Cotton
Weight 200gsm
Wash: 40°C domestic wash.

COLOUR



BLACK

FAIRTRADE WAIST APRON

PR114

- Half waist apron
- 90cm self-fabric ties
- Width 70cm
- Length 50cm

FABRIC

100% Certified Fairtrade Cotton
Weight 200gsm
Wash: 40°C domestic wash.

COLOUR



BLACK

PR114

PR112

TWENTY  COLOURS

COTTON

CREDENTIALS

100% COTTON BIB APRON

PR102

- Self-fabric ties
- Self-fabric neckband
- Width 60cm, length 87cm
- Available in 20 colours

FABRIC

100% Cotton
Weight 240gsm
Wash: 60°C domestic wash,
85°C industrial wash

COLOUR

20 as listed



20
"COLOURS"



BIB APRON

PR101

- Black anti-tangle ties
- Black neck-band
- Width 72cm, length 87cm
- Crease resistant finish

FABRIC

65% Polyester, 35% Cotton.
Klopman Superbandmaster
Weight 210gsm
Wash: 60°C domestic wash,
85°C industrial wash

COLOUR



BLACK

BIB APRON WITH POCKET

PR104

- Black anti-tangle ties
- Black neckband
- Width 60cm, length 87cm
- Double front pocket

FABRIC

65% Polyester, 35% Cotton.
Klopman Superbandmaster
Weight 210gsm
Wash: 60°C domestic wash,
85°C industrial wash

COLOUR



BLACK



6 KLOPMAN STYLES

Klopman fabric is renowned for exceptional colour consistency and colour retention. You can be assured that these styles work as hard as you day after day.



DELUXE BIB APRON

PR124

- Sliding adjustable buckle on neck band
- Double front pocket
- Width 60cm
- Length 84cm

FABRIC

65% Polyester, 35% Cotton.
Klopman Superbandmaster
Weight 210gsm
Wash: 60°C domestic wash,
85°C industrial wash

COLOUR



BLACK



NAVY



WHITE



BOTTLE



PR105



PR109



PR107

CLASSIC SERVICE OPTIONS

ZIP POCKET WAIST APRON

PR105

- Two zipped closed pockets
- Centre open pocket
- 90cm self-fabric ties
- Width 60cm, length 33cm

FABRIC

65% Polyester, 35% Cotton.
Klopman Indestructible
Weight 245gsm
Wash: 60°C domestic wash,
85°C industrial wash

COLOUR



3 OPEN POCKET BAR APRON

PR109

- Three open pockets
- 90cm self-fabric ties
- Width 60cm
- Length 33cm

FABRIC

65% Polyester, 35% Cotton.
Klopman Indestructible
Weight 245gsm
Wash: 60°C domestic wash,
85°C industrial wash

COLOUR



SHORT BAR APRON

PR107

- Half waist apron
- 90cm self-fabric ties
- Width 90cm
- Length 40cm

FABRIC

65% Polyester, 35% Cotton.
Klopman Indestructible
Weight 245gsm
Wash: 60°C domestic wash,
85°C industrial wash

COLOUR



18
"COLOURS"



LADIES' LONG LENGTH POCKET TABARD

PR172

- Pull-on coverall with a length of 78cm
- Side tabs with adjustable press stud fastening
- Self-coloured bias trim
- Centre pocket

FABRIC

65% Polyester, 35% Cotton
Weight: 195gsm
Wash: 60°C domestic wash,
85°C industrial wash

SIZES

10/S, 12/M, 14/L, 16/XL

COLOUR

3 colours as listed



LADIES' POCKET TABARD

PR171

- Pull-on coverall with a length of 68cm
- Side tabs with adjustable press stud fastening
- Self-coloured bias trim
- Centre pocket

FABRIC

65% Polyester, 35% Cotton
Weight: 195gsm
Wash: 60°C domestic wash, 85°C industrial wash

SIZES

10/S, 12/M, 14/L, 16/XL, 18/2XL, 20/3XL

COLOUR

18 colours listed left



TABARDS

LAYERS OF STYLE

LADIES' CONTRAST TABARD

PR176

- Over-the-head style
- Side tabs with two stud button fastenings
- Two front slanted pockets
- Length 72cm

FABRIC

65% Polyester, 35% Cotton
Weight: 195gsm
Wash: 60°C domestic wash,
85°C industrial wash

SIZES

10/S, 12/M, 14/L, 16/XL

COLOUR

2 as listed



TULIP WRAP AROUND TUNIC

PR177

- Over-the-head style
- Attractive shape to flatter the female figure
- V-neck styling
- Centre patch pocket

FABRIC

Fabric: 100% polyester plain weave
Weight: 185gsm
Wash: 40°C domestic wash.

SIZES

S/M 10/12, L/XL 14/16

COLOUR

4 as listed below



FASTENING TIP

Bring the ties from back to front and tie round your waist on the underside, then take front ties and fasten at the back.



CREATIVE COMBINATIONS

So, you've chosen your aprons, now you need to complete your outfit with a choice of shirts, tees or polo tops.

If you're after a more casual approach, take a look at our Long John roll sleeve tees, polo shirts, denim and check options. If smart service is the order of the day, go for Poplin styles with a colourful twist.



Vintage INSPIRED WORKWEAR

EST.
1999

MULLIGAN

'MULLIGAN' CHECK MEN'S COTTON LONG SLEEVE SHIRT

PR250

- Roll sleeve option with button and tab fastening on the upper arm
- Narrow soft collar styling
- Semi fitted style for men
- Fashionable check pattern

FABRIC

100% Cotton Yarn Dyed Poplin
Weight: 115gsm

SIZES (call size/chest ")

S/34, M/38, L/42, XL/46, 2XL/50, 3XL/54

COLOUR

4 as listed

'MULLIGAN' CHECK LADIES' LONG SLEEVE COTTON SHIRT

PR350

- Roll sleeve option with button and tab fastening on the upper arm
- Narrow soft collar styling
- Semi fitted style for ladies
- Fashionable check pattern

FABRIC

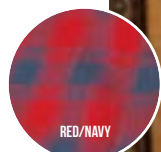
100% Cotton Yarn Dyed Poplin
Weight: 115gsm

SIZES

XS/8, S/10, M/12, L/14, XL/16, 2XL/18

COLOUR

4 as listed



PR250

PR350

NEW

PR256

PR356

NEW

Vintage INSPIRED WORKWEAR

EST.
1999

SIDEHILL

MEN'S LONG SLEEVE 'SIDEHILL' CHECK COTTON SHIRT

PR256

- Roll sleeve option with button and tab fastening on the upper arm
- Narrow soft collar styling
- Contrast colour check pattern
- Semi fitted style for men

FABRIC

100% Cotton Yarn Dyed Poplin
Weight: 115gsm

SIZES (call size/chest ")

S/34, **M**/38, **L**/42, **XL**/46, **2XL**/50, **3XL**/54

COLOUR

Navy/Red

LADIES' LONG SLEEVE 'SIDEHILL' CHECK COTTON SHIRT

PR356

- Roll sleeve option with button and tab fastening on the upper arm
- Narrow soft collar styling
- Contrast colour check pattern
- Semi fitted style for ladies

FABRIC

100% Cotton yarn Dyed Poplin
Weight: 115gsm

SIZES

XS/8, **S**/10, **M**/12, **L**/14,
XL/16, **2XL**/18

COLOUR

Navy/Red



Button tab fastening

Vintage INSPIRED WORKWEAR

EST.
1999

GINMILL

'GINMILL' CHECK MEN'S COTTON LONG SLEEVE SHIRT

PR254

- Roll sleeve option with button and tab fastening on the upper-arm
- Narrow soft collar styling
- Semi fitted style for men
- Fashionable check pattern

FABRIC

100% Cotton Yarn Dyed Poplin
Weight: 115gsm

SIZES (call size / chest ")

S/34, **M**/38, **L**/42, **XL**/46, **2XL**/50, **3XL**/54

COLOUR

Black/White

SEMI
FITTED

'GINMILL' CHECK LADIES' COTTON LONG SLEEVE SHIRT

PR354

- Roll sleeve option with button and tab fastening on the upper-arm
- Narrow soft collar styling
- Semi fitted style for ladies
- Fashionable check pattern

FABRIC

100% Cotton Yarn Dyed Poplin
Weight: 115gsm

SIZES

XS/8, **S**/10, **M**/12, **L**/14,
XL/16, **2XL**/18

COLOUR

Black/White



BLACK/WHITE



Narrow soft collar



PR254

PR354

NEW

SHORT SLEEVE CHECK SHIRTS

MEN'S SHORT SLEEVE GINGHAM MICROCHECK SHIRT

PR221

- Popular Gingham Microcheck
- Semi-fitted styling
- Soft collar styling

FABRIC

100% Cotton
Weight: 115gsm

SIZES (call size/chest ")

XS/30, **S**/34, **M**/38, **L**/42, **XL**/46, **2XL**/50,
3XL/54

COLOUR

4 as listed

SEMI
FITTED



RED/WHITE



BLACK/WHITE



NAVY/WHITE



LIGHT BLUE/WHITE

LADIES' SHORT SLEEVE GINGHAM MICROCHECK SHIRT

PR321

- Soft collar styling
- Microcheck Gingham pattern
- Bust and back darts for a fitted shape

FABRIC

100% Cotton
Weight: 115gsm

SIZES

8/XS, **10**/S, **12**/M, **14**/L, **16**/XL,
18/2XL, **20**/3XL

COLOUR

4 as listed

NEW

PR221

PR321

PREMIER
UNIFORMS THAT WORK FOR YOU





GO GINGHAM

MEN'S LONG SLEEVE GINGHAM MICROCHECK SHIRT

PR220

- Soft collar styling
- Microcheck Gingham pattern
- Double buttons on the cuff
- Semi fitted shirt

FABRIC

100% Cotton
Weight: 115gsm

SIZES (call size/chest to fit ")

XS/30, **S**/34, **M**/38, **L**/42 **XL**/46,
2XL/50, **3XL**/54

COLOUR

4 as listed

SEMI
FITTED



LADIES' LONG SLEEVE GINGHAM MICROCHECK SHIRT

PR320

- Soft collar styling
- Microcheck Gingham pattern
- Double buttons on the cuff
- Bust and back darts for a fitted shape

FABRIC

100% Cotton
Weight: 115gsm

SIZES

8/XS, **10**/S, **12**/M, **14**/L, **16**/XL,
18/2XL, **20**/3XL

COLOUR

4 as listed

PR202

CLASSIC
FIT

PR302

POPLIN

SHORT SLEEVE

MEN'S SHORT SLEEVE POPLIN SHIRT

PR202

- Formal collar styling
- Left chest open Mitred pocket
- Self-coloured buttons
- Easycare

FABRIC

65% Polyester, 35% Cotton
Weight: 105gsm

SIZES (collar) "/cm

14.5/37, 15/38, 15.5/39.5, 16/41,
16.5/42, 17/43, 17.5/44.5, 18/46,
18.5/47, 19/48, 20/51, 21/53,
22/56, *23/59

(*only available in selected colours)

COLOUR

30 as listed

LADIES' SHORT SLEEVE POPLIN BLOUSE

PR302

- Soft collar styling
- Bust and back darts for a semi fitted appearance
- Rounded bottom hem
- Self-coloured buttons

FABRIC

65% Polyester, 35% Cotton
Weight: 105gsm / 115gsm White

SIZES

6/2XS, 8/XS, 10/S, 12/M, 14/L, 16/XL, 18/2XL,
20/3XL, 22/4XL, 24/5XL, 26/6XL, *28/7XL, *30/8XL

(*only available in selected colours)

COLOUR

30 as listed

PREMIER
UNIFORMS THAT WORK FOR YOU





POPLIN

LONG SLEEVE

MEN'S LONG SLEEVE POPLIN SHIRT

PR200

- Formal collar styling
- Left chest open Mitred pocket
- Double button fastening on the cuff
- Easy care

FABRIC

65% Polyester, 35% Cotton
Weight: 105gsm

SIZES (collar) "/cm

14.5/37, 15/38, 15.5/39.5, 16/41,
16.5/42, 17/43, 17.5/44.5, 18/46,
18.5/47, 19/48, 20/51, 21/53,
22/56, *23/59
(*only available in selected colours)

COLOUR

30 as listed

LADIES' LONG SLEEVE POPLIN BLOUSE

PR300

- Soft collar styling
- Bust and back darts for a semi fitted appearance
- Rounded bottom hem
- Double buttons on the cuff

FABRIC

65% Polyester, 35% Cotton
Weight: 105gsm/ White 115gsm

SIZES

6/2XS, 8/XS, 10/S, 12/M, 14/L, 16/XL, 18/2XL,
20/3XL, 22/4XL, 24/5XL, 26/6XL, *28/7XL, *30/8XL
(*only available in selected colours)

COLOUR

30 as listed

CLASSIC
FIT



PR200

PR300

30
COLOURS

POPLIN

ALTERNATIVES

LADIES' THREE QUARTER SLEEVE POPLIN BLOUSE

PR305

- Soft collar styling
- Three quarter sleeve with vented cuff
- Bust and back darts for a semi fitted appearance
- Rounded bottom hem

FABRIC

65% Polyester, 35% Cotton
Weight: 105gsm/115gsm White

CLASSIC
FIT

SIZES

6/2XS, 8/XS, 10/S, 12/M, 14/L, 16/XL,
18/2XL, 20/3XL, 22/4XL, 24/5XL, 26/6XL
(Size 6 in Black & White only)

COLOUR

7 as listed



MEN'S LONG SLEEVE FITTED POPLIN SHIRT

PR204

- Formal collar styling
- Double button fastening on the cuff
- Fitted style

FABRIC

65% Polyester, 35% Cotton
Weight: 105gsm

SIZES (collar) "/cm

14.5/37, 15/38, 15.5/39.5, 16/41,
16.5/42, 17/43, 17.5/44.5

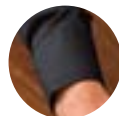
COLOUR

8 as listed

FITTED
STYLE



Formal cut collar



Double buttons on cuff



PR305

PR204



SUPREME POPLIN

MEN'S SHORT SLEEVE SUPREME POPLIN SHIRT

PR209

- Offering a heavier fabric weight
- Formal collar styling
- Two button fastening on the collar stand
- Semi-fitted styling

FABRIC

65% Polyester, 35% Cotton
Weight: 125gsm

SIZES (collar) "/cm

14.5/37, 15/38, 15.5/39.5, 16/41, 16.5/42, 17/43, 17.5/44.5, 18/46, 18.5/47, 19/48

COLOUR

3 as listed

LADIES' SHORT SLEEVE SUPREME POPLIN BLOUSE

PR309

- Offering a heavier fabric weight
- Soft collar styling
- Two button fastening on the collar stand
- Semi-fitted styling with back and bust darts

FABRIC

65% Polyester, 35% Cotton
Weight: 125gsm

SIZES

8/XS, 10/S, 12/M, 14/L, 16/XL, 18/2XL, 20/3XL, 22/4XL, 24/5XL, 26/6XL

COLOUR



**SEMI
FITTED**



SUPREME STYLING

MEN'S LONG SLEEVE SUPREME POPLIN SHIRT

PR207

- Offering a heavier fabric weight
- Formal collar styling
- Two button fastening on the collar stand
- Semi-fitted styling

FABRIC

65% Polyester, 35% Cotton
Weight: 125gsm

SIZES (collar) "/cm

14.5/37, **15**/38, **15.5**/39.5, **16**/41,
16.5/42, **17**/43, **17.5**/44.5, **18**/46,
18.5/47, **19**/48

COLOUR

3 as listed



LADIES' LONG SLEEVE SUPREME POPLIN BLOUSE

PR307

- Offering a heavier fabric weight
- Soft collar styling
- Two button fastening on the collar stand
- Semi-fitted styling

FABRIC

65% Polyester, 35% Cotton
Weight: 125gsm

SIZES

8/XS, **10**/S, **12**/M, **14**/L, **16**/XL, **18**/2XL,
20/3XL, **22**/4XL, **24**/5XL, **26**/6XL

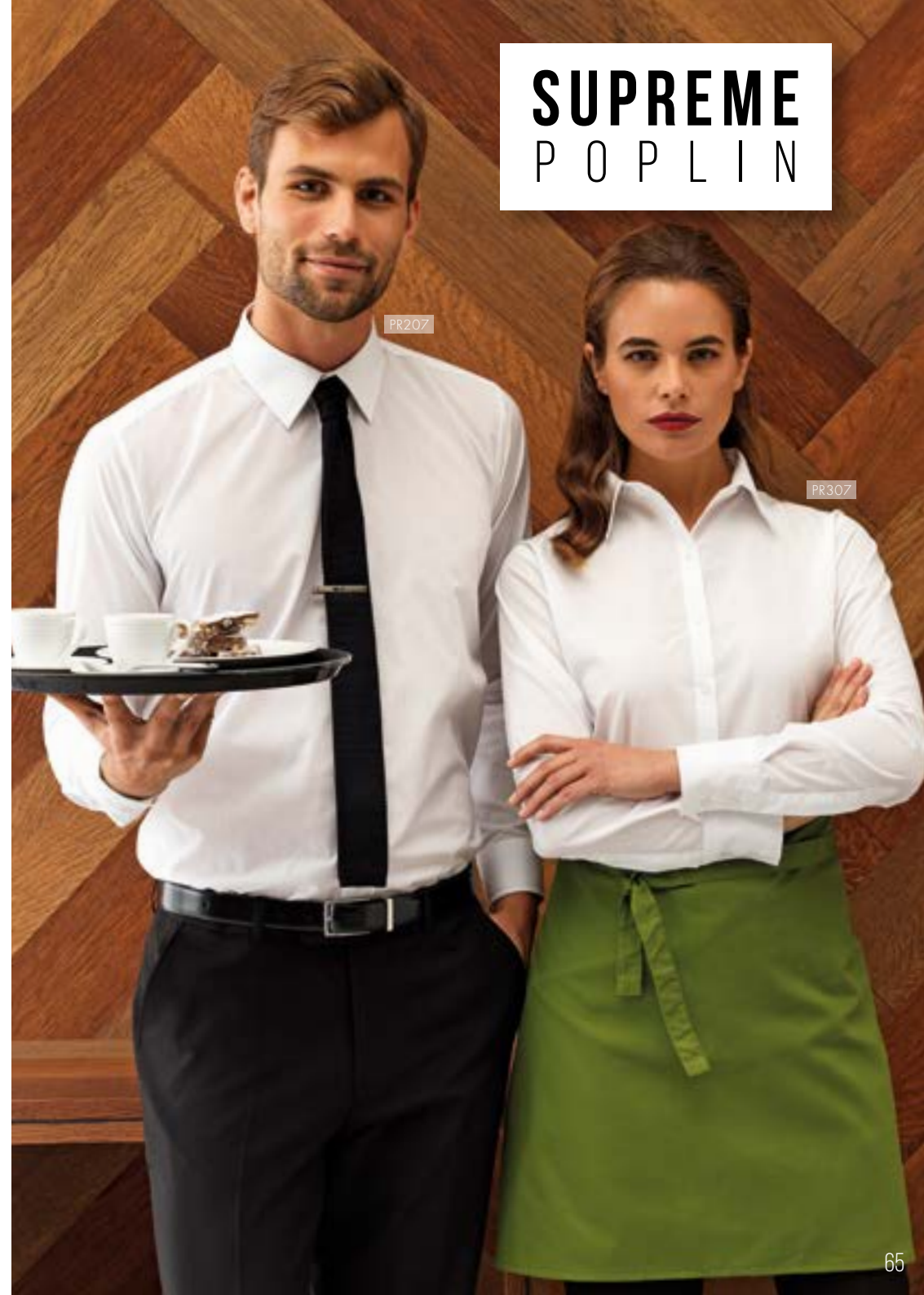
COLOUR

3 as listed

**SEMI
FITTED**



SUPREME
P O P L I N



PR207

PR307



PR322

PR222

HOSPITALITY IT'S IN THE JEANS

MEN'S JEANS STITCH DENIM SHIRT

PR222

- Contrast stitch details
- Left chest button down pocket
- Buttoned cuff and sleeve guard for roll back option on the lower arm

FABRIC

100% Ringspun Cotton Denim
Weight: 155gsm

SIZES (call size/chest "I")

XS/30, **S**/34, **M**/38, **L**/42, **XL**/46,
2XL/50, **3XL**/54

COLOUR

2 as listed



BLACK DENIM

LADIES' JEANS STITCH DENIM SHIRT

PR322

- Contrast stitch details
- Two button down breast pockets
- Buttoned cuff and sleeve guard for roll back option on the lower arm

FABRIC

100% Ringspun Cotton Denim
Weight: 155gsm

SIZES

8/XS, **10**/S, **12**/M, **14**/L, **16**/XL,
18/2XL, **20**/3XL

COLOUR

2 as listed



INDIGO DENIM

SEMI
FITTED

Cross-Dye

BAR SHIRT

MEN'S ROLL SLEEVE 'CROSS DYE' POPLIN SHIRT

PR217

- Soft collar styling
- Cross dye textured fabric appearance
- Long sleeve option with two button fastening on the cuff
- Roll-up sleeve option with button fastening on the upper arm

FABRIC

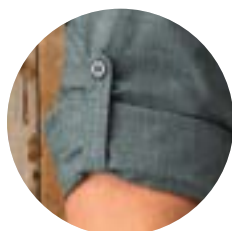
65% Polyester, 35% Cotton
Weight: 105gsm

SIZES (call size/chest ")

XS/30, **S**/34, **M**/38, **L**/42, **XL**/46,
2XL/50, **3XL**/54

COLOUR

2 as listed



- Roll up sleeve
- Button fastening

LADIES' ROLL SLEEVE 'CROSS DYE' POPLIN SHIRT

PR317

- Soft collar styling
- Cross dye textured fabric appearance
- Long sleeve option with two button fastening on the cuff
- Roll-up sleeve option with button fastening on the upper arm

FABRIC

65% Polyester, 35% Cotton
Weight: 105gsm

SIZES

8/XS, **10/S**, **12/M**, **14/L**, **16/XL**,
18/2XL, **20/3XL**

COLOUR

2 as listed



**SEMI
FITTED**

PR217

PR317





PR206

PR306

Roll-Sleeve

BAR SHIRT

MEN'S ROLL SLEEVE POPLIN SHIRT

PR206

- Single button cuff fastening
- Button and tab on upper arm to secure rolled sleeve in place
- Left chest vented pocket
- Soft collar styling

FABRIC

65% Polyester, 35% Cotton
Weight: 105gsm

SIZES (call size/chest ")

S/34, **M**/38, **L**/42, **XL**/46, **2XL**/50

COLOUR

Black

LADIES' ROLL SLEEVE POPLIN SHIRT

PR306

- Bust and back darts
- Button and tab on upper arm to secure rolled sleeve in place
- Left chest vented pocket
- Soft collar styling

FABRIC

65% Polyester, 35% Cotton
Weight: 105gsm

SIZES

XS, **S**, **M**, **L**, **XL**, **2XL**

COLOUR

Black

CLASSIC
FIT



BLACK

BLACK

Friday

BAR SHIRT

MEN'S LONG SLEEVE FITTED 'FRIDAY BAR SHIRT'

PR214

- Soft collar styling
- Contrast fabric tape on the inside collar stand
- Buttoned cuff and sleeve guard for roll back option on the lower arm
- Fitted shirt

FABRIC

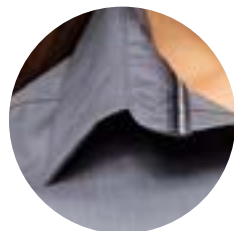
65% Polyester, 35% Cotton
Weight: 105gsm

SIZES (call size/ chest ")

XS/30, **S**/34, **M**/38, **L**/42, **XL**/46, **2XL**/50

COLOUR

2 as listed



- Soft collar
- Trim detail

LADIES' LONG SLEEVE FITTED 'FRIDAY BAR SHIRT'

PR314

- Soft collar styling
- Contrast fabric tape on the inside collar stand
- Buttoned cuff and sleeve guard for roll back option on the lower arm
- Fitted shirt with bust and back darts

FABRIC

65% Polyester, 35% Cotton
Weight: 105gsm

SIZES (Call size)

XS/8, **S**/10, **M**/12, **L**/14, **XL**/16, **2XL**/18

COLOUR

2 as listed



**FITTED
STYLE**

PR214

PR314





WAISTCOATS

SERVICE READY

MEN'S HOSPITALITY WAISTCOAT

PR620

- Self-fabric back
- Two functional watch pockets
- Five button fastening
- Easy-care

FABRIC
65% Polyester, 35% Cotton
Weight: 195gsm

SIZES
S, M, L, XL, 2XL

COLOUR
1 as listed



LADIES' HOSPITALITY WAISTCOAT

PR621

- Self-fabric back
- Two functional watch pockets
- Four button fastening
- Easy-care

FABRIC
65% Polyester, 35% Cotton
Weight: 195gsm

SIZES
S, M, L, XL, 2XL

COLOUR
1 as listed



MEN'S LINED POLYESTER WAISTCOAT

PR622

- Satin back
- Two functional watch pockets
- Five button fastening
- Back adjuster

FABRIC
100% Polyester
Weight: 185gsm

SIZES
2XS, XS, S, M, L, XL, 2XL

COLOUR
Black



LADIES' LINED POLYESTER WAISTCOAT

PR623

- Satin back
- Two functional watch pockets
- Four button fastening
- Back adjuster

FABRIC
100% Polyester
Weight: 185gsm

SIZES
2XS, XS, S, M, L, XL, 2XL

COLOUR
Black

STATEMENT TIES & SCARVES

40

COLOURS



SATIN TIE

PR750

- Plain satin tie
- Blade width 3.34" / 8.5cm
- Length 57" / 144cm
- Clip-on version, PR755

FABRIC

100% Polyester
Wash: 30°C domestic wash

COLOURS

40 as listed



CLIP-ON SATIN TIE

PR755

- Clip-on version of PR750
- Steel clip
- Blade width 3.34" / 8.5cm
- Length 20" / 50cm

FABRIC

100% Polyester
Wash: Hand wash only

COLOURS

40 as listed



'COLOURS COLLECTION' LADIES' CHIFFON SCARF

PR740

- Lightweight chiffon
- Width 6.5" / 16.5cm
- Length 38.5" / 98cm
- Complements PR750 men's tie

FABRIC

100% Polyester
Wash: Hand wash only

COLOURS

40 as listed





'COLOURS'

ORIGINALS



'COLOURS COLLECTION' FASHION TIE

PR765

- Tie offering a more matt appearance in comparison to PR750
- Blade width 4"/10cm
- Length 57"/144cm

FABRIC

100% Polyester
Wash: 30°C domestic wash

COLOURS

18 as listed

'COLOURS COLLECTION' CLIP-ON FASHION TIE

PR785

- Clip-on version
- Blade width 4"/10cm
- Length 18"/47cm

FABRIC

100% Polyester
Wash: Hand wash only

COLOURS

18 as listed



18
'COLOURS'



PR789

KNITTED

SLIM & STYLISH TIE



SLIM KNITTED TIE

PR789

- Blade width 2"/5cm
- Length 58"/147cm
- Hand wash only

FABRIC

100% Polyester

COLOUR

6 as listed

BOW TIE

PR705

- Satin weave bow tie
- Hook and bar fastening.

FABRIC

100% Polyester



SLIM TIE

PR793

- Satin weave
- Blade width 2"/5cm
- Length 58"/147cm

FABRIC

100% Polyester

COLOURS

5 colours as listed





MEN'S LONG-JOHN ROLL SLEEVE TEE

PR218

- Roll-sleeve with button and tab fastening on the upper arm
- Round neck with three button placket
- Ribbed bound neck and cuffs
- Soft and stretchy fabric feel

FABRIC

82% Polyester, 14% Viscose, 4% Elastane, Weight: 190gsm. White/Navy, Yarn Dyed stripe detail.

SIZES

XS, S, M, L, XL, 2XL, 3XL

COLOUR

White, White/Navy, Grey Marl, Indigo, Black

LADIES' LONG-JOHN ROLL SLEEVE TEE

PR318

- Roll-sleeve with button and tab fastening on the upper arm
- Round neck with three button placket
- Ribbed bound neck and cuffs
- Soft and stretchy fabric feel

FABRIC

82% Polyester, 14% Viscose, 4% Elastane, Weight: 190gsm. White/Navy, Yarn Dyed stripe detail

SIZES

XS, S, M, L, XL, 2XL

COLOUR

White, White/Navy, Grey Marl, Indigo, Black



NEW

NEW

PR630

PR632

COOL[®]
CHECKER

Plus

PREMIER[®]
UNIFORMS THAT WORK FOR YOU

NEXT GENERATION

PERFORMANCE POLO

MEN'S COOLCHECKER™ PLUS PIQUE POLO - COOLPLUS®

PR630

- Ribbed knit collar and cuffs
- 3 button placket, self coloured
- Side panels for semi fitted styling
- Double pique knit
- Snag resistant, crease resistant, shrink resistant
- CoolPlus® wicking yarn for comfort
- Quick dry for everyday use
- Excellent colour retention wash after wash
- Silvadur™ antibacterial finish for odour resistance

FABRIC

100% Coolplus Polyester Pique.
Weight: 185gsm

SIZES (call size/chest *)

S/34, **M**/38, **L**/42, **XL**/46, **2XL**/50, **3XL**/52,
4XL/54, ***5XL**/56, ***6XL**/58
(*only available in selected colours)

COLOUR

16 as listed

LADIES' COOLCHECKER™ PLUS PIQUE POLO - COOLPLUS®

PR632

- Ribbed knit collar and cuffs
- 3 button placket, self coloured
- Side panels for semi fitted styling
- Double pique knit
- Snag resistant, crease resistant, shrink resistant
- CoolPlus® wicking yarn for comfort
- Quick dry for everyday use
- Excellent colour retention wash after wash
- Silvadur™ antibacterial finish for odour resistance

FABRIC

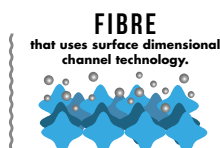
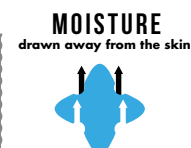
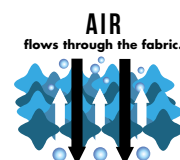
100% Coolplus Polyester Pique.
Weight: 185gsm

SIZES

XS/8, **S**/10, **M**/12, **L**/14, **XL**/16, **2XL**/18,
****3XL**/20, ****4XL**/22
(**only available in selected colours)

COLOUR

16 as listed



**Silvadur™
ANTIMICROBIAL**
which releases silver ions that
destroy the bacteria that
causes odour, material
degradation and discolouration.

POLO SHIRTS

24
"COLOURS"

MEN'S COOLCHECKER PIQUE POLO

PR615

- Side panels for fitted shape
- Ribbed knit collar
- Three button placket
- Moisture management properties

FABRIC

100% Polyester pique knit
Weight: 155gsm

SIZES (call size/chest "I")

S/34, **M**/38, **L**/42, **XL**/46, **2XL**/50,
3XL/52, **4XL**/54, ***5XL**/56
(*only available in selected colours)

COLOUR

24 as listed

LADIES' COOLCHECKER PIQUE POLO

PR616

- Side panels for fitted shape
- Ribbed knit collar
- Three button placket
- Moisture management properties

FABRIC

100% Polyester pique knit
Weight: 155gsm

SIZES

8/XS, **10**/S, **12**/M,
14/L, **16**/XL, **18**/2XL

COLOUR

24 as listed



COOL[®]
CHECKER



PR618

PR619

COOL[®]
CHECKER

PREMIER[®]
UNIFORMS THAT WORK FOR YOU

CONTRAST POLO

MEN'S CONTRAST TIPPED COOLCHECKER POLO

PR618

- Side panels for fitted shape
- Ribbed knit collar and cuffs
- Three button placket
- Contrast trim on collar, placket and sleeves

FABRIC

100% Polyester pique knit
Weight: 155gsm

SIZES (call size / chest ")
S/34, **M**/38, **L**/42, **XL**/46, **2XL**/50,
3XL/52, **4XL**/54

COLOUR

12 as listed

LADIES' CONTRAST TIPPED COOLCHECKER POLO

PR619

- Side panels for fitted shape
- Ribbed knit collar and cuffs
- Three button placket
- Contrast trim on collar, placket and sleeves

FABRIC

100% Polyester pique knit
Weight: 155gsm

SIZES
8/XS, **10**/S, **12**/M, **14**/L, **16**/XL, **18**/2XL

COLOUR

12 as listed



NAVY/WHITE

ROYAL/WHITE

RED/BLACK

SUNFLOWER/RED

BLACK/SUNFLOWER

BLACK/ORANGE

BLACK/RED

BLACK/PURPLE

BLACK/TURQUOISE

BLACK/LIME

BLACK/WHITE

DARK GREY/SILVER

MEN'S LONG SLEEVE COOLCHECKER PIQUE POLO

PR617

- Three button placket
- Side panels for a fitted shape
- Moisture management wicking properties
- Ribbed knit collar and cuffs

FABRIC

100% Polyester Pique
Weight: 155gsm
Wash: 40°C domestic wash

SIZES (call size/chest ")
XS/30, S/34, M/38,
L/42, XL/46, 2XL/50,
3XL/52, 4XL/54

COLOUR
2 as listed



MEN'S STUDDED POLO

PR610

- Three pop stud placket
- Extra body length
- Durable pique knit construction
- Ribbed knit collar

FABRIC

65% Polyester, 35% Cotton
Weight: 200gsm
Wash: 50°C domestic wash

SIZES (call size/chest ")
S/34, M/38, L/42, XL/46,
2XL/50, 3XL/52

COLOUR
4 as listed



COOLCHECKER STUDDED POLO

PR612

- Two pop stud fastening on the placket
- Extra body length
- Moisture management wicking properties
- Self-fabric collar

FABRIC

100% Polyester Pique
Weight: 140gsm
Wash: 60°C domestic wash

SIZES (call size/chest ")
XS/30, S/34, M/38, L/42, XL/46,
2XL/50, 3XL/52

COLOUR
9 as listed



SNAPPY STYLES

COOL
CHECKER

PR617

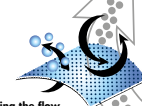
PR610



PR612

COOL
CHECKER®

Drawing moisture
away from the body



Allowing the flow
of air through the fabric,
fast dry and crease resistant.



PERFORMANCE 'CHINO' JEAN

MEN'S PERFORMANCE 'CHINO' JEAN

PR560

- Classic cut Chino with two front pockets
- Rivet detail
- Two patch pockets to the rear
- Belts loops to facilitate a belt.
- Covered YKK zip fly with single metal button fastening on the waistband
- Stretch fabric capability for maximum comfort
- Exceptional durability and wash performance

FABRIC

63% Polyester, 35% Cotton, 2% Elastane.
Weight: 260gsm

SIZES (call size/waist ")

XS/30, **S**/32, **M**/34, **L**/36, **XL**/38,
2XL/40, **3XL**/42, **4XL**/44
(Regular 31" & Long leg 34")

COLOUR

5 as listed

LADIES' PERFORMANCE 'CHINO' JEAN

PR570

- Classic cut Chino with two front pockets
- Rivet detail
- Two patch pockets to the rear
- Belts loops to facilitate a belt.
- Covered YKK zip fly with single metal button fastening on the waistband
- Stretch fabric capability for maximum comfort
- Exceptional durability and wash performance

FABRIC

63% Polyester, 35% Cotton, 2% Elastane.
Weight: 260gsm

SIZES

XS/8, **S**/10, **M**/12, **L**/14, **XL**/16,
2XL/18, **3XL**/20, **4XL**/22, **5XL**/24
(Regular 31" & Long leg 34")

COLOUR

5 as listed

| |
|----------|
| BLACK |
| NAVY |
| CHARCOAL |
| CAMEL |
| STEEL |



Clip-on TROUSER BRACES

PR701

- Elastic Y back strap braces
- Three non-slip clip buckles for attachment
- Fully adjustable with lock buckles
- Faux leather piece

FABRIC

60% Polyester, 40% Rubber

SIZES

One Size

COLOUR

5 as listed

| |
|-------|
| BLACK |
| BROWN |
| NAVY |
| RED |
| STEEL |

TAILORED FIT



PR526

STRAIGHT FIT



PR536

STRAIGHT FIT



PR520

TAPERED FIT



PR538

SLIM FIT



PR528

BOOT CUT



PR530

YOU WEAR THE TROUSERS

MEN'S TAILORED TROUSERS

PR526

- Flat fronted trouser offering a more tailored fit
- YKK zip fly with button, hook 'n' bar fastening
- Two swing hip pockets
- Rear jetted pocket

FABRIC

100% Polyester
Weight: 185gsm

SIZES

30 - 44" / 76 - 110cm waist.
Regular leg 31"/79 cm and Long leg 34"/86 cm available

COLOUR



BLACK

LADIES' 'IRIS' STRAIGHT LEG TROUSER

PR536

- Trousers with a deep waistband
- YKK fastening zip
- Cross-over waistband with two button fastening
- No pockets

FABRIC

100% Polyester
Weight: 185gsm

SIZES

8 - 24 / XS-5XL
Regular leg 31"/79 cm and Long leg 34"/86 cm available

COLOUR



BLACK

MEN'S BUSINESS TROUSERS

PR520

- Single pleated front
- YKK zip fly with button, hook 'n' bar fastening
- Two swing hip pockets
- Rear jetted pocket

FABRIC

100% Polyester
Weight: 185gsm

SIZES

30 - 44" / 76 - 110cm waist.
Regular leg 31"/79 cm and Long leg 34"/86 cm available

COLOUR



BLACK



DARK NAVY

LADIES' TAPERED LEG TROUSER

PR538

- Tapered fit that follows the contours of the leg
- YKK fastening zip
- Cross-over waistband with two button fastening
- Two non-functional rear vented pockets for styling

FABRIC

100% Polyester
Weight: 185gsm

SIZES

8 - 24 / XS-5XL
Regular leg 31"/79 cm and Long leg 34"/86 cm available

COLOUR



BLACK

MEN'S SLIM FIT POLYESTER TROUSERS

PR528

- Trousers offering a slimmer fit shape around the leg
- YKK zip fly with button, hook 'n' bar fastening
- Two swing hip pockets
- Rear jetted pocket

FABRIC

100% Polyester
Weight: 185gsm

SIZES

30 - 44" / 76 - 110cm waist.
Regular leg 31"/79 cm and Long leg 34"/86 cm available

COLOUR



BLACK

LADIES' BUSINESS TROUSERS

PR530

- Single pleated front
- YKK zip fly with button, hook 'n' bar fastening
- Boot cut style
- Belt loops

FABRIC

100% Polyester
Weight: 185gsm

SIZES

8 - 24 / XS-5XL
Regular leg 31"/79 cm and Long leg 34"/86 cm available

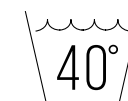
COLOUR



BLACK



DARK NAVY



CHEFSWEAR

PREPARATION IS EVERYTHING

Style and practicality is the order of the day in the Premier kitchen! Chef's whites combine with chef's blacks, denims, checks and stripes to create an interesting menu of choice.

Just as every good dish should be seasoned, every good chef should be accessorised, so we offer a selection of hats, scarfs and aprons to complete the look.



NEW

DENIM CHEF'S JACKET

DENIM CHEF'S JACKET

PR660

- Cotton rich chef's jacket
- Cross-over front fastening
- Ten snap button fasteners
- Mandarin collar stand

FABRIC

60% Cotton, 40% Polyester.
Weight: 230gsm

SIZES
XS, S, M, L, XL, 2XL, 3XL



COLOUR
Black Denim, Grey Denim



PR665

PR664

The Main INGREDIENTS

SHORT SLEEVE STUDDED FRONT CHEF'S JACKET

PR664

- Mandarin collar
- Press stud fastening
- Wrap over style
- Unisex styling

FABRIC

65% Polyester, 35% Cotton
Weight: 195gsm
Wash: 60°C domestic wash,
85°C industrial wash

SIZES

XS, S, M, L, XL, 2XL, 3XL

COLOUR

2 as listed

LONG SLEEVE STUDDED FRONT CHEF'S JACKET

PR665

- Mandarin collar
- Press stud fastening
- Wrap over style
- Unisex styling

FABRIC

65% Polyester, 35% Cotton
Weight: 195gsm
Wash: 60°C domestic wash,
85°C industrial wash

SIZES

XS, S, M, L, XL, 2XL, 3XL

COLOUR

2 as listed



LADIES' CHEFSWEAR

IN 2 CLASSIC STYLES

LADIES' SHORT SLEEVE CHEF'S JACKET

PR670

- Ten button hole wrap over fastening
- Pen pocket on left sleeve
- Mandarin collar
- Panelled back for a more fitted style

FABRIC

65% Polyester, 35% Cotton.
Weight: 195gsm

SIZES

8/XS, 10/S, 12/M, 14/L, 16/XL, 18/2XL

COLOUR

1 as listed

LADIES' LONG SLEEVE CHEF'S JACKET

PR671

- Ten button hole wrap over fastening
- Pen pocket on left sleeve
- Mandarin collar
- Panelled back for a more fitted style

FABRIC

65% Polyester, 35% Cotton.
Weight: 195gsm

SIZES

8/XS, 10/S, 12/M, 14/L, 16/XL, 18/2XL

COLOUR

1 as listed





PR656

Culinary CLASSICS

THE LONG & SHORT OF IT

SHORT SLEEVE CHEF'S JACKET

PR656

- Ten button hole wrap over fastening
- Pen pocket on left sleeve
- Mandarin collar
- Long life resin buttons

FABRIC

65% Polyester, 35% Cotton.
Weight: 195gsm

SIZES

XS, S, M, L, XL, 2XL, 3XL, 4XL

COLOUR

2 as listed

LONG SLEEVE CHEF'S JACKET

PR657

- Ten button hole wrap over fastening
- Pen pocket on left sleeve
- Mandarin collar
- Long life resin buttons

FABRIC

65% Polyester, 35% Cotton.
Weight: 195gsm

SIZES

XS, S, M, L, XL, 2XL, 3XL, 4XL

COLOUR

2 as listed



PR657





PR669

CATCH OF THE DAY

CHEF'S SHORT SLEEVE 'CULINARY' PULL ON TUNIC

PR668

- Over-the-head style
- Mandarin collar
- Wrap over style
- Single press stud fastening

FABRIC

65% Polyester, 35% Cotton
Weight: 195gsm
Wash: 60°C domestic wash,
85°C industrial wash

SIZES

XS, S, M, L, XL, 2XL

COLOUR

1 as listed



CHEF'S LONG SLEEVE 'CULINARY' PULL ON TUNIC

PR669

- Over-the-head style
- Mandarin collar
- Wrap over style
- Single press stud fastening

FABRIC

65% Polyester, 35% Cotton
Weight: 195gsm
Wash: 60°C domestic wash,
85°C industrial wash

SIZES

XS, S, M, L, XL, 2XL

COLOUR

1 as listed



PR668





PR659

50°

SERVED CHILLED

LONG SLEEVE COOLMAX CHEF'S JACKET

PR659

- Coolmax back panel for moisture management
- Mandarin collar
- Concealed press stud fastening



FABRIC

65% Polyester, 35% Cotton
Weight: 195gsm
Wash: 50°C domestic wash

SIZES

XS, S, M, L, XL, 2XL

COLOUR

1 as listed



WHITE

LONG SLEEVE CUISINE CHEF'S JACKET

PR661

- Mandarin collar
- Comes with Black removable studs (other colours available, see page 107)
- Ten hole wrap over fastening
- Turn back split cuff

FABRIC

65% Polyester, 35% Cotton
Weight: 195gsm

SIZES

XS, S, M, L, XL, 2XL, 3XL, 4XL

COLOUR

2 as listed

CHEF'S JACKET STUDS

PR652

- Removable studs
- For use with PR661 Cuisine Jacket
- Sold in bags of 12

FABRIC

Durable plastic
Wash: Wipe clean

COLOUR

4 as listed



BLACK



NAVY



WHITE



RED



PR661



BLACK



WHITE



NAVY & WHITE CHECK BLACK & WHITE CHECK

BLACK & WHITE CHECK *BLACK

BLACK

SLIM FIT

A Walk in the KITCHEN

PULL ON CHEF'S TROUSER

PR552

- Elasticated waist
- Rear patch pocket
- Zip fly
- 77cm/30.5" inside leg

FABRIC

65% Polyester, 35% Cotton.
Weight: 195gsm
Wash: 60°C domestic wash,
85°C industrial wash

SIZES

XS, S, M, L, XL, 2XL

COLOUR

2 colours as listed

ESSENTIAL CHEF'S TROUSER

PR553

- Elasticated waist
- Draw cord
- Swing pockets
- 77cm/30.5" inside leg

FABRIC

65% Polyester, 35% Cotton.
Weight: 195gsm
Wash: 60°C domestic wash,
85°C industrial wash

SIZES

XS, S, M, L, XL, 2XL, 3XL, *4XL
(*only available in Black)

COLOUR

2 colours as listed

CHEF'S SELECT SLIM LEG TROUSER

PR554

- Fitted style on lower leg
- Rear patch pocket
- Patch pocket on right leg
- Elasticated waist with draw cord and zip fly fastening

FABRIC

65% Polyester, 35% Cotton.
Weight: 195gsm
Wash: 60°C domestic wash,
85°C industrial wash

SIZES

XS, S, M, L, XL, 2XL

COLOUR

1 colour as listed



COOL® CHECKER



CHEF'S COOLCHECKER T-SHIRT

PR649

- Crew neck styling
- Mesh back panel for airflow
- Underarm side vent holes
- Pen pocket on left sleeve

FABRIC

100% Polyester
Weight: 135gsm
Wash: 40°C domestic wash

SIZES

XS, S, M, L, XL, 2XL, 3XL

COLOUR

2 as listed



HATS OFF

CHEF'S SKULL CAP

PR653

- Flat top
- Elasticated back
- One size fits all

FABRIC

Colours - 65% Polyester, 35% Cotton
 *Striped - 100% Cotton
 **Denim - 60% Cotton 40% Polyester
 Weight: Colours - 195gsm
 *Striped - 240gsm
 **Denim 230gsm
 Wash: 60°C domestic wash,
 85°C industrial wash

SIZES

One size

COLOUR

10 as listed



CHEF'S ZANDANA

PR658

- Two ties at the back
- Elasticated back
- Neck flap
- Unisex design

FABRIC

65% Polyester, 35% Cotton.
 Weight: 195gsm

SIZES

One size

COLOUR

2 as listed



CHEF'S SCARF

PR654

- Triangular scarf
- Can be worn as a bandana, neckerchief or headband
- Colours to complement aprons, stud and skull caps
- Crease resistant finish

FABRIC

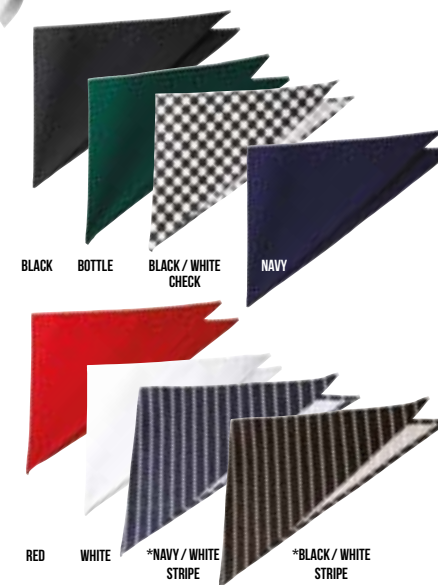
Colours - 65% Polyester, 35% Cotton
 *Striped - 100% Cotton
 Weight: Colours - 195gsm
 *Striped - 240gsm
 Wash: 60°C domestic wash,
 85°C industrial wash

SIZES

One size

COLOUR

8 as listed



TURN UP CHEF'S HAT

PR648

- Turn up double edge band
- Five eyelets for ventilation
- Four sizes available

FABRIC

65% Polyester, 35% Cotton.
 Weight: 195gsm
 Wash: 60°C domestic wash,
 85°C industrial wash

SIZES

S, M, L, XL

COLOUR

2 as listed.





60 Shades OF SERVICE

'COLOURS COLLECTION' BIB APRON

PR150

- Bib apron offering good coverage
- Adjustable buckle on neckband
- Self-fabric ties
- Length of 86cm and width of 72cm

FABRIC

65% Polyester, 35% Cotton.
Weight: 195gsm
Denim designs are 70% Cotton,
30% Polyester
Denim designs are 265gsm
Wash: 60°C domestic wash,
85°C industrial wash.

TIP

Great shades come to those who wait!
Over time, repeated washing will give
denim aprons a vintage appearance.

| | | | | | | | | | |
|-----------------|----------|-------------|---------------|----------------|------------|------------|------------|-----------|----------|
| | | | | | | | | | |
| CORNFLOWER | ROYAL | MARINE BLUE | NAVY | INDIGO DENIM | BLUE DENIM | CYAN | LIGHT BLUE | TURQUOISE | MID BLUE |
| | | | | | | | | | |
| SAPPHIRE | LILAC | LAVENDER | PURPLE | RICH VIOLET | AUBERGINE | FUCHSIA | MAGENTA | PINK | HOT PINK |
| | | | | | | | | | |
| RASPBERRY CRUSH | BURGUNDY | RED | SALSA | STRAWBERRY RED | ORANGE | TERRACOTTA | CHESTNUT | BROWN | MOCHA |
| | | | | | | | | | |
| MUSHROOM | LATTE | KHAKI | NATURAL | CAMEL | MUSTARD | SUNFLOWER | YELLOW | LEMON | LIME |
| | | | | | | | | | |
| OASIS GREEN | OLIVE | AQUA | DUCK EGG BLUE | PEACOCK | TEAL | EMERALD | KELLY | PISTACHIO | APPLE |
| | | | | | | | | | |
| BOTTLE | SAGE | WHITE | BLACK DENIM | GREY DENIM | SILVER | STEEL | CHARCOAL | DARK GREY | BLACK |



PURE COTTON

100% COTTON BIB APRON

PR102

- Self-fabric ties
- Self-fabric neckband
- Width 60cm, length 87cm
- Available in 20 colours

FABRIC

100% Cotton
Weight 240gsm
Wash: 60°C domestic wash,
85°C industrial wash

COLOUR
20 as listed



STRIPED BIB APRON

PR110

- Butcher's style apron
- 90cm self-fabric ties and neck band
- Width 72cm, length 101cm

FABRIC

Navy/White, Black/White: 100% Cotton
Weight 240gsm

Black/Grey:
65% Polyester, 35% Cotton
Weight 205gsm

Wash: 60°C domestic wash,
85°C industrial wash

COLOUR
3 as listed



BLACK/
WHITE

BLACK/
GREY

NAVY/
WHITE



Ethical POLICY

CERTIFICATIONS OF COMPLIANCE

At Premier we take our Corporate Social Responsibility very seriously and we continue to invest to ensure that the long term vision for the company is sustainable in relation to the environment and the people that live and work alongside us.

We are able to provide you with copies of our certifications of compliance, so you can be assured that we are working to the highest ethical, social and environmental standards we can.



Registration, Evaluation, Authorisation and Restriction of Chemicals (REACH)

The REACH directive is a European Union regulation concerning the protection of human health and the environment from the use of chemicals during the production process. All Premier products are produced in factories that are REACH compliant.

Visit www.hse.gov.uk/reach to learn more about the REACH directive.



OEKO-TEX® Standard 100

OEKO-TEX® Standard 100 is an independent testing and certification system for textiles which highlights the use of any dangerous substances that could be harmful to human health.

At every stage of production, the majority of the Premier fabrics have passed the recognised criteria, proving that no such chemicals have been used during any stage of production. All products that are manufactured from OEKO-TEX® Standard 100 approved fabric have the logo visible on the product page on the Premier website.

Visit www.oeko-tex.com to learn more about OEKO-TEX® Standard 100 testing.



Worldwide Responsible Accredited Production (WRAP)

WRAP is an independent body which gives certification to factories that meet criteria in relation to facilities, production and working practices for employees.

All of the Premier garments that are produced outside of the United Kingdom have been made in WRAP certified factories. The garments that are produced in the UK are made in factories that adhere to 'European Agency Health and Safety at Work' regulations. All garments that are produced in WRAP certified factories have the logo visible on the product page on the product page on the Premier website.

Visit www.wrapcompliance.org to learn more about WRAP accreditation.

Read more about our ethical policy at www.premierworkwear.com

SIZE GUIDE

LADIES'

SHIRTS/POLO'S/TEES/CHEF'S JACKETS/KNITWEAR/WAISTCOATS/BEAUTY TUNICS

| Call size | XXS | XS | S | M | L | XL | 2XL | 3XL | 4XL | 5XL | 6XL | 7XL | 8XL |
|----------------|-----|----|----|----|----|-----|-----|-----|-----|-----|-----|------|-----|
| Size | 6 | 8 | 10 | 12 | 14 | 16 | 18 | 20 | 22 | 24 | 26 | 28 | 30 |
| Collar cm | 39 | 40 | 41 | 42 | 44 | 45 | 47 | 48 | 50 | 51 | 53 | 54.5 | 56 |
| Bust to fit " | 31 | 33 | 35 | 37 | 39 | 41 | 43 | 45 | 47 | 49 | 51 | 53 | 55 |
| Bust to fit cm | 79 | 84 | 89 | 94 | 99 | 104 | 109 | 114 | 119 | 124 | 129 | 134 | 139 |

LADIES' TROUSERS

| Call size | XXS | XS | S | M | L | XL | 2XL | 3XL | 4XL | 5XL |
|-----------------|-----|----|----|----|----|----|-----|-----|-----|-----|
| Size | 6 | 8 | 10 | 12 | 14 | 16 | 18 | 20 | 22 | 24 |
| Waist to fit " | 22 | 24 | 26 | 28 | 30 | 32 | 34 | 36 | 38 | 40 |
| Waist to fit cm | 54 | 59 | 64 | 69 | 74 | 79 | 84 | 89 | 94 | 99 |

MEN'S

SHIRTS/POLO'S/TEES/CHEF'S JACKETS/KNITWEAR/WAISTCOATS/HEALTH TUNICS

| Call size | XS | S | S/M | M | M/L | L | L/XL | XL | 2XL | 3XL | 4XL | 5XL | 6XL | 7XL | 8XL |
|-----------------|----|-----|-----|------|-----|-----|------|------|-----|-----|-----|-----|-----|-----|-----|
| Collar " | 14 | 14½ | 15 | 15½ | 16 | 16½ | 17 | 17½ | 18 | 18½ | 19 | 20 | 21 | 22 | 23 |
| Collar cm | 36 | 37 | 38 | 39.5 | 41 | 42 | 43 | 44.5 | 46 | 47 | 48 | 51 | 53 | 56 | 59 |
| Chest to fit " | 30 | 34 | 36 | 38 | 40 | 42 | 44 | 46 | 50 | 52 | 54 | 56 | 58 | 60 | 62 |
| Chest to fit cm | 77 | 87 | 92 | 96 | 102 | 107 | 111 | 117 | 126 | 132 | 138 | 142 | 147 | 152 | 157 |

MEN'S TROUSERS

| Call size | S | M | L | XL | 2XL | 3XL | 4XL | 5XL |
|-----------------|----|----|----|----|-----|-----|-----|-----|
| To fit waist" | 30 | 32 | 34 | 36 | 38 | 40 | 42 | 44 |
| To fit waist cm | 76 | 80 | 86 | 92 | 96 | 100 | 106 | 110 |

CHEF'S TROUSERS

| Call size | XS | S | M | L | XL | 2XL | 3XL | 4XL |
|-----------------|-------|-------|-------|-------|-------|--------|---------|---------|
| To fit waist" | 24-26 | 27-29 | 30-32 | 33-35 | 36-38 | 39-40 | 41-42 | 43-44 |
| To fit waist cm | 61-66 | 68-73 | 76-81 | 84-89 | 91-96 | 99-101 | 104-106 | 109-111 |

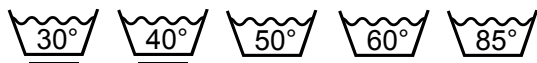


WASHCARE SYMBOLS Explained

Our clothes are labelled with a whole host of wash care instructions and symbols, but do you really know what they all mean?

FOLLOW PREMIER'S SIMPLE GUIDE TO ACHIEVING THE PERFECT PILE OF LAUNDRY!

WASHING



The wash bowl with a number in denotes the maximum temperature that you should wash the garment to, in either a domestic or industrial washing machine.



Hand wash only



Do not bleach



Suitable for dry cleaning



Do not dry clean

DRYING



Do not wring



Hang to dry



Dry flat



Drip dry



Do not tumble dry



Suitable for tumble drying



Tumble dry on low heat



Tumble dry on medium heat



Tumble dry on high heat

IRONING



Do not iron



Iron on low heat



Iron on medium heat



Iron on high heat



Do not steam iron

INDEX

HOSPITALITYWEAR

APRONS

| | | |
|-------|---|----|
| PR101 | BIB APRON | 36 |
| PR102 | COTTON BIB APRON | 34 |
| PR104 | BIB APRON WITH POCKET | 36 |
| PR105 | ZIP POCKET WAIST APRON | 38 |
| PR107 | SHORT BAR APRON | 39 |
| PR109 | THREE OPEN POCKET BAR APRON | 39 |
| PR112 | FAIRTRADE BIB APRON | 33 |
| PR114 | FAIRTRADE WAIST APRON | 33 |
| PR124 | DELUXE BIB APRON | 37 |
| PR125 | JEANS STITCH DENIM WAIST APRON | 13 |
| PR126 | JEANS STITCH DENIM BIB APRON | 13 |
| PR127 | 'DOMAIN' CONTRAST DENIM BIB APRON | 11 |
| PR128 | 'DOMAIN' CONTRAST DENIM WAIST APRON | 11 |
| PR130 | 'CALIBRE' HEAVY COTTON CANVAS BIB APRON | 18 |
| PR131 | 'CALIBRE' HEAVY COTTON CANVAS WAIST APRON | 18 |
| PR132 | 'CHINO' BIB APRON | 17 |
| PR133 | 'CHINO' WAIST APRON | 9 |
| PR134 | 'DISTRICT' WAXED LOOK BIB APRON | 9 |
| PR135 | 'DIVISION' WAXED LOOK WAIST APRON | 6 |
| PR136 | 'DIVISION' WAXED LOOK BIB APRON WITH FAUX LEATHER | 14 |
| PR140 | 'ARTISAN' LEATHER CROSS BACK APRON | 27 |
| PR149 | CHILDREN'S BIB APRON | 20 |
| PR150 | 'COLOURS' BIB APRON | 23 |
| PR151 | 'COLOURS' HALF WAIST APRON | 23 |
| PR154 | 'COLOURS' BIB APRON WITH POCKET | 25 |
| PR155 | 'COLOURS' THREE POCKET APRON | 31 |
| PR156 | BISTRO WAIST APRON WITH POCKET | 25 |
| PR158 | 'COLOURS' LONG BAR APRON | 26 |
| PR159 | 'COLOURS' 2 IN 1 APRON | 29 |
| PR162 | CONTRAST BIB APRON | 30 |
| PR165 | ESSENTIAL BIB APRON | 28 |
| PR167 | 100% POLYESTER APRON | 31 |
| PR169 | BISTRO WAIST APRON | |

TABARDS

| | | |
|-------|-----------------------------------|----|
| PR171 | LADIES' POCKET TABARD | 40 |
| PR172 | LADIES' LONG POCKET TABARD | 41 |
| PR176 | CONTRAST TABARD | 42 |
| PR177 | LADIES' 'TULIP' WRAP AROUND TUNIC | 43 |

SHIRTS, BLOUSES & TEE'S

| | | |
|-------|---|----|
| PR200 | MEN'S POPLIN LONG SLEEVE SHIRT | 58 |
| PR202 | MEN'S POPLIN SHORT SLEEVE SHIRT | 57 |
| PR204 | MEN'S POPLIN LONG SLEEVE FITTED SHIRT | 60 |
| PR206 | MEN'S ROLL SLEEVE BAR SHIRT | 71 |
| PR207 | MEN'S SUPREME POPLIN LONG SLEEVE SHIRT | 64 |
| PR209 | MEN'S SUPREME POPLIN SHORT SLEEVE SHIRT | 63 |
| PR214 | MEN'S LONG SLEEVE FITTED FRIDAY BAR SHIRT | 72 |
| PR217 | MEN'S CROSS-DYE ROLL SLEEVE BAR SHIRT | 68 |
| PR218 | MEN'S LONGJOHN ROLL SLEEVE TEE | 80 |
| PR220 | MEN'S MICROCHECK GINGHAM LONG SLEEVE SHIRT | 55 |
| PR221 | MEN'S MICROCHECK GINGHAM SHORT SLEEVE SHIRT | 52 |
| PR222 | MEN'S JEAN'S STITCH DENIM SHIRT | 67 |
| PR250 | MEN'S MULLIGAN CHECK COTTON LONG SLEEVE SHIRT | 46 |
| PR254 | MEN'S GINMILL CHECK COTTON LONG SLEEVE SHIRT | 50 |
| PR256 | MEN'S LONG SLEEVE SIDEHILL CHECK COTTON SHIRT | 49 |
| PR300 | LADIES' POPLIN LONG SLEEVE BLOUSE | 58 |
| PR302 | LADIES' POPLIN SHORT SLEEVE BLOUSE | 57 |
| PR305 | LADIES' POPLIN THREE QUARTER SLEEVE BLOUSE | 60 |
| PR306 | LADIES' ROLL SLEEVE BAR SHIRT | 80 |
| PR307 | LADIES' SUPREME POPLIN LONG SLEEVE BLOUSE | 64 |
| PR309 | LADIES' SUPREME POPLIN SHORT SLEEVE BLOUSE | 63 |
| PR314 | LADIES' LONG SLEEVE FITTED FRIDAY BAR SHIRT | 72 |
| PR317 | LADIES' CROSS-DYE ROLL SLEEVE BAR SHIRT | 68 |
| PR318 | LADIES' LONGJOHN ROLL SLEEVE TEE | 80 |
| PR320 | LADIES' MICROCHECK GINGHAM LONG SLEEVE SHIRT | 55 |
| PR321 | LADIES' MICROCHECK GINGHAM SHORT SLEEVE SHIRT | 52 |
| PR322 | LADIES' JEAN'S STITCH DENIM SHIRT | 67 |
| PR350 | LADIES' MULLIGAN CHECK COTTON LONG SLEEVE SHIRT | 46 |
| PR354 | LADIES' GINMILL CHECK COTTON LONG SLEEVE SHIRT | 50 |
| PR356 | LADIES' LONG SLEEVE SIDEHILL CHECK COTTON SHIRT | 49 |

WAISTCOATS

| | | |
|-------|-------------------------------|----|
| PR620 | MEN'S HOSPITALITY WAISTCOAT | 75 |
| PR621 | LADIES' HOSPITALITY WAISTCOAT | 75 |
| PR622 | MEN'S LINED WAISTCOAT | 75 |
| PR623 | LADIES' LINED WAISTCOAT | 75 |

TIES & SCARVES

| | | |
|-------|-------------------------------|----|
| PR705 | SATIN BOW TIE | 79 |
| PR740 | 'COLOURS' PLAIN CHIFFON SCARF | 77 |
| PR750 | 'COLOURS' SATIN TIE | 76 |
| PR755 | 'COLOURS' SATIN CLIP ON TIE | 76 |
| PR765 | 'COLOURS' FASHION TIE | 78 |
| PR785 | 'COLOURS' FASHION CLIP ON TIE | 78 |
| PR789 | SUM KNITTED TIE | 79 |
| PR793 | SUM TIE | 79 |

POLO SHIRTS

| | | |
|-------|---|----|
| PR610 | MEN'S STUDDED POLO | 88 |
| PR612 | COOLCHECKER STUD POLO | 89 |
| PR615 | COOLCHECKER MEN'S PIQUE POLO | 84 |
| PR616 | COOLCHECKER LADIES' PIQUE POLO | 84 |
| PR617 | LONG SLEEVE COOLCHECKER PIQUE POLO | 88 |
| PR618 | MEN'S CONTRAST TIPPED COOLCHECKER POLO | 87 |
| PR619 | LADIES' CONTRAST TIPPED COOLCHECKER POLO | 87 |
| PR630 | MEN'S COOLCHECKER PLUS PIQUE POLO - COOLPLUS® | 83 |
| PR632 | LADIES' COOLCHECKER PLUS PIQUE POLO - COOLPLUS® | 83 |

TROUSERS & BRACES

| | | |
|-------|--------------------------------------|----|
| PR560 | MEN'S PERFORMANCE CHINO JEAN | 91 |
| PR570 | LADIES' PERFORMANCE CHINO JEAN | 91 |
| PR701 | CLIP ON TROUSER BRACES | 91 |
| PR520 | MEN'S BUSINESS TROUSERS | 92 |
| PR526 | MEN'S TAILORED TROUSERS | 92 |
| PR528 | MEN'S SUM FIT TROUSERS | 93 |
| PR530 | LADIES' BUSINESS TROUSERS | 93 |
| PR536 | LADIES' 'IRIS' STRAIGHT LEG TROUSERS | 92 |
| PR538 | LADIES' TAPERED LEG TROUSER | 93 |

CHEFSWEAR

CHEF'S JACKETS

| | | |
|-------|---|-----|
| PR656 | SHORT SLEEVE CHEF'S JACKET | 103 |
| PR657 | LONG SLEEVE CHEF'S JACKET | 103 |
| PR659 | CHEF'S COOLMAX LONG SLEEVE JACKET | 109 |
| PR660 | DENIM CHEF'S JACKET | 97 |
| PR661 | 'CUISINE' CHEF'S JACKET | 106 |
| PR664 | STUDDED FRONT SHORT SLEEVE CHEF'S JACKET | 99 |
| PR665 | STUDDED FRONT LONG SLEEVE CHEF'S JACKET | 99 |
| PR668 | CHEF'S SHORT SLEEVE 'CUISINARY' PULL ON TUNIC | 105 |
| PR669 | CHEF'S LONG SLEEVE 'CUISINARY' PULL ON TUNIC | 105 |
| PR670 | LADIES' SHORT SLEEVE CHEF'S JACKET | 100 |
| PR671 | LADIES' LONG SLEEVE CHEF'S JACKET | 100 |

CHEF'S T-SHIRT

| | | |
|-------|----------------------------|-----|
| PR649 | COOLCHECKER CHEF'S T-SHIRT | 109 |
|-------|----------------------------|-----|

CHEF'S TROUSERS

| | | |
|-------|--------------------------|-----|
| PR552 | PULL ON CHEF'S TROUSER | 108 |
| PR553 | ESSENTIAL CHEF'S TROUSER | 108 |
| PR554 | CHEF'S SELECT TROUSER | 108 |

CHEF'S ACCESSORIES

| | | |
|-------|-------------------------------|-----|
| PR648 | TURN-UP CHEF'S HAT | 111 |
| PR652 | 'CUISINE' CHEF'S JACKET STUDS | 107 |
| PR653 | CHEF'S SKULL CAP | 110 |
| PR654 | CHEF'S SCARF | 111 |
| PR658 | CHEF'S ZANDANA | 111 |

CHEF'S APRONS

| | | |
|-------|---------------------|-----|
| PR102 | COTTON BIB APRON | 114 |
| PR110 | STRIPED BIB APRON | 115 |
| PR150 | 'COLOURS' BIB APRON | 113 |



®

PREMIER

UNIFORMS THAT WORK FOR YOU



APRONS
SHIRTS & BLOUSES
POLOS
CHEFSWEAR

