

Instructions for running BoBII version 2.12 on Linux under the Windows emulator wine

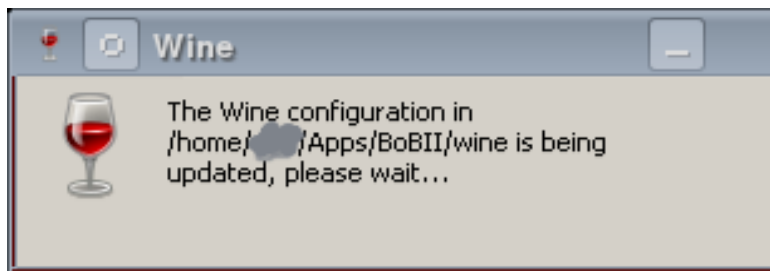
Linux distribution: Ubuntu 14.04 LTS (trusty), 64-bit architecture:
Linux 3.13.0-39-generic #66-Ubuntu SMP x86_64 GNU/Linux

Computer:

- Laptop with Intel® Pentium® 2020M Prozessor (2,4 GHz, Dual-Core) + HM70 chip set, onboard Intel Graphics controller, 1366x768 display
- Desktop with AMD Athlon(tm) II X2 270 Processor (800 MHz, Dual-Core) , AMD ATI RS780L [Radeon HD 3000] graphics controller, 1680x1050 monitor

The following commands are entered into a Linux command window (example below is running as user 'userX')

```
wine --version  
wine-1.6.2  
mkdir -p ~/Apps/BoBII/wine  
cd ~/Apps/BoBII  
wget http://kegel.com/wine/winetricks  
chmod 755 ./winetricks  
export WINEPREFIX=~/Apps/BoBII/wine;  
./winetricks d3dx9
```



mount BobII CD on /media/cdrom

```
wine /media/cdrom/Autorun.exe
```

Select BOBII for install





Do not install direct3D from the CD !

The following desktop link is generated:

```
env WINEPREFIX="/home/userX/Apps/BoBII/wine" wine C:\\windows\\command\\start.exe /Unix  
/home/userX/Apps/BoBII/wine/dosdevices/c:/users/Public/Desktop/Battle\ of\ Britain\ II.lnk
```

Run it once to generate the initial bdg.txt, it messes up the screen (use Ctrl-Alt-F1 to get a console shell to kill bob.exe, eg. with the command

```
pkill -f bob.exe
```

)

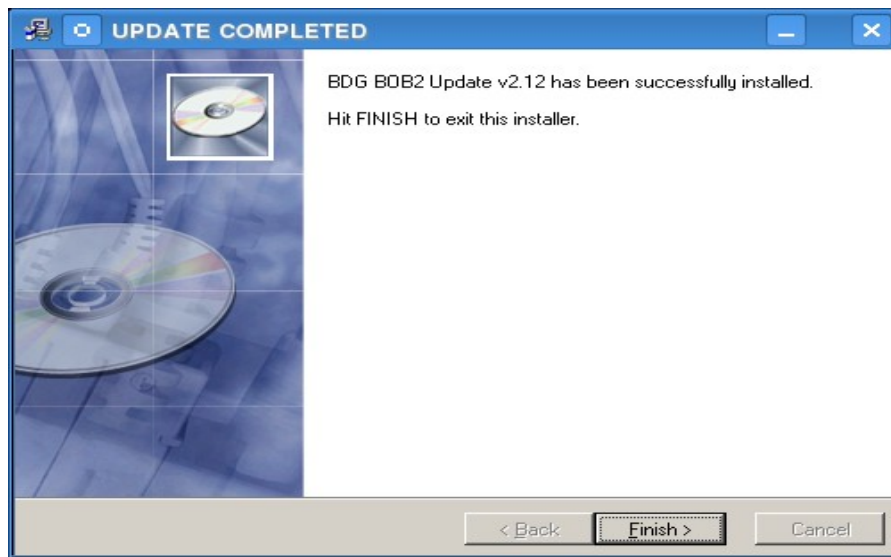
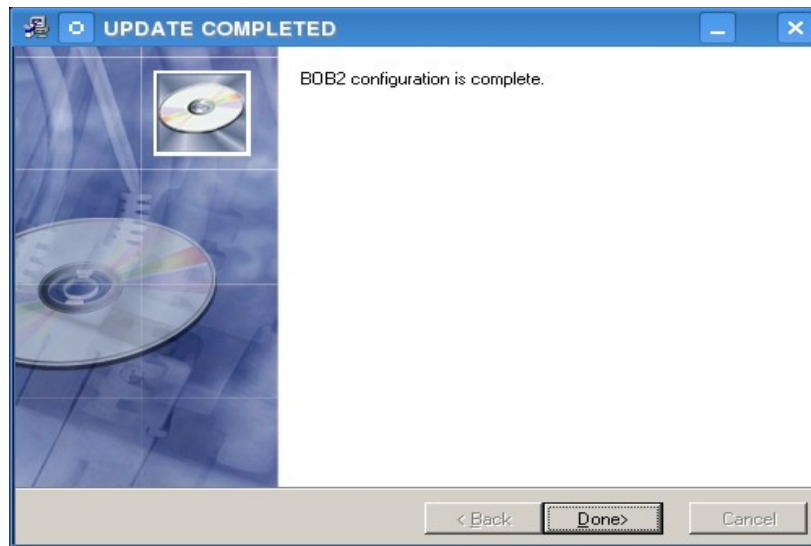
Edit wine/drive_c/Battle_of_Britain_II/bdg.txt, and set

```
INTRO_VIDEO=OFF  
SKIP_QUICKVIDEOS=ON  
SKIP_VIDEOS=ON
```

unzip bob2_update_v2.12.zip into the current directory, and run

```
wine ./bob2_update_v2.12.EXE
```

perform the upgrade, keep the previous bdg.txt



Again, do not reinstall directX!

---> **BoBII runs on the laptop!**

I get about 30 fps average, 13 min. during the takeoff training

However there is still a crash on the desktop computer:

```
env WINEPREFIX="/home/userX/Apps/BoBII/wine" wine  
C:\\windows\\command\\start.exe /Unix  
/home/userX/Apps/BoBII/wine/dosdevices/c:/users/Public/Desktop/"Battle of Britain  
II.lnk" > tmp/bob_out.log 2>&1
```

```
fixme:d3d:resource_check_usage Unhandled usage flags 0x8.  
fixme:d3d:resource_check_usage Unhandled usage flags 0x68.  
fixme:d3d9:Direct3DShaderValidatorCreate9 stub  
fixme:d3d:resource_check_usage Unhandled usage flags 0x68.  
fixme:d3d:resource_check_usage Unhandled usage flags 0x68.
```

```
err:d3d:resource_init Out of adapter memory
fixme:d3d_texture:texture_init Failed to create surface 0x15055b60, hr 0x8876017c
fixme:dbghelp:elf_search_auxv can't find symbol in module
wine: Unhandled exception 0x80000003 in thread 2f at address 0x7bc799bc (thread
002f), starting debugger...
```

```
lspci | grep -i vga
01:05.0 VGA compatible controller: Advanced Micro Devices, Inc. [AMD/ATI] RS780L
[Radeon 3000]
grep -i mem /var/log/Xorg.0.log
[ 8874.321] (-- PCI:*(0:1:5:0) 1002:9616:105b:0e26 rev 0, Mem @
0xd0000000/268435456, 0xfeae0000/65536, 0xfe900000/1048576, I/O @ 0x0000c000/256
[ 8874.473] (II) RADEON(0): mem size init: gart size :1fdef000 vram size:
s:10000000 visible:f8ca000
```

→ 256M Video memory, seems not detected properly by wine

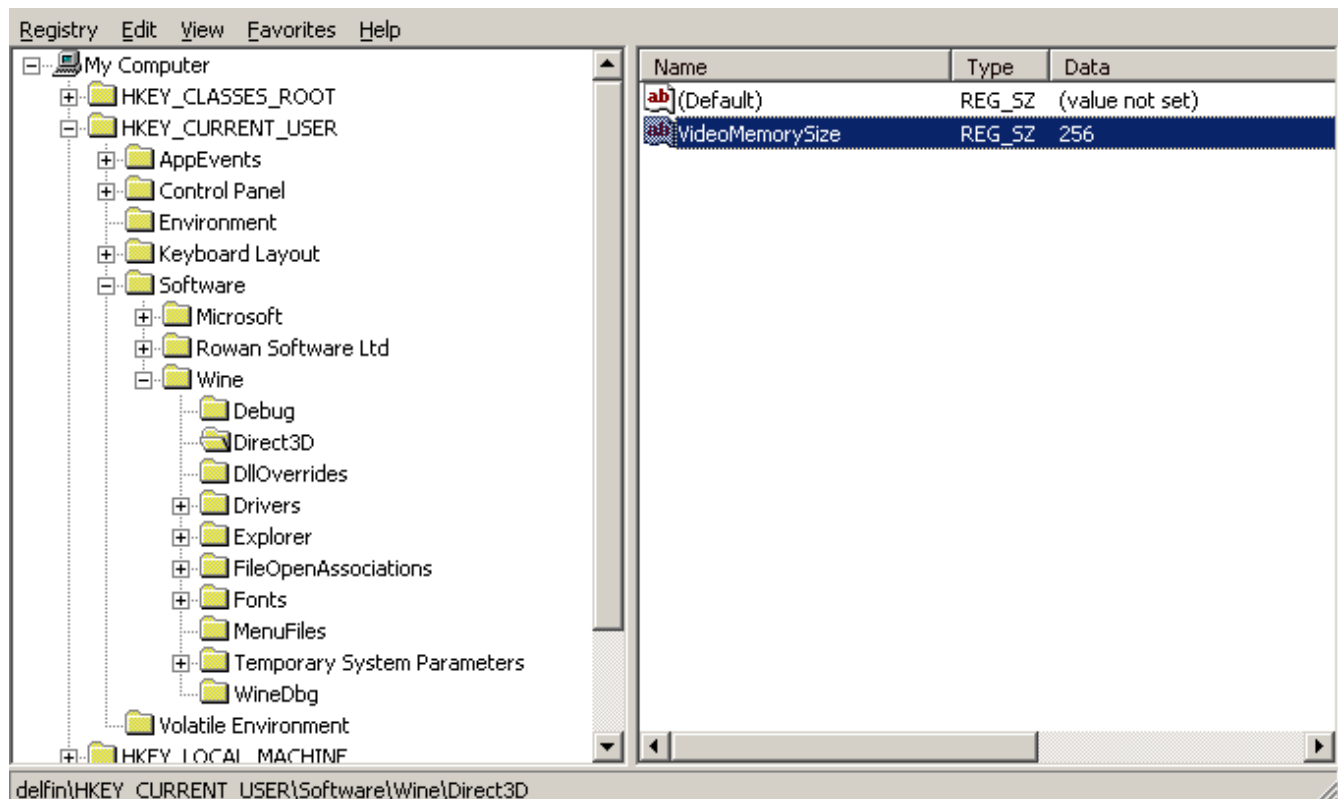
From <http://wiki.winehq.org/UsefulRegistryKeys>

HKEY_CURRENT_USER\Software\Wine\Direct3D\ VideoMemorySize
[Sets the amount of reported video memory (in megabytes). The default is a simple auto-detection based on the card type guessed from OpenGL capabilities.]

```
env WINEPREFIX="/home/userX/Apps/BoBII/wine" wine regedit.exe
```

```
cat regedit-Direct3D.txt
REGEDIT4
```

```
[HKEY_CURRENT_USER\Software\Wine\Direct3D]
"VideoMemorySize"="256"
```



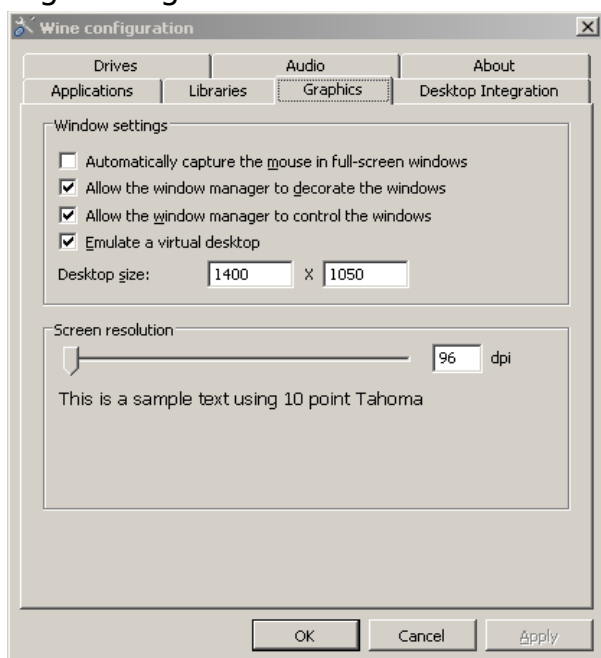
---> IT WORKS also on desktop with Radeon 3000 !!!



Configuration for correct aspect ratio on 1680x1050 monitor

Run

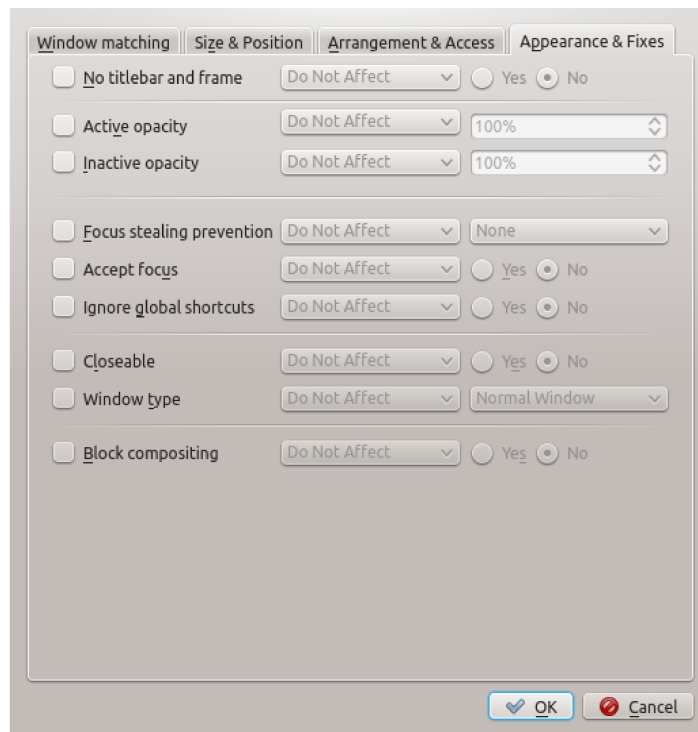
`env WINEPREFIX="/home/userX/Apps/BoBII/wine" winecfg`
and perform the following settings



GFX settings in BoBII:



KDE Application settings for wine in order to get a centered 1400x1050 window with no border on a 1680x1050 monitor:



Note: $(1680-1400) : 2 = 140$

in `.kde/share/config/kwinrulesrc` you will find

```
[1]
Description=Application settings for wine
clientmachine=delfin
clientmachinematch=0
noborder=true
noborderrule=3
position=140,0
positionrule=2
size=1404,1054
sizerule=2
types=4294967295
wmclass=explorer.exe wine
wmclasscomplete=true
wmclassmatch=1
```