

Communications Enclosures

- Battery Cabinets
- Econoline
- Multi-Dwelling Unit
- Rack Mounts
- TCMC Modulars
- TCMC Series

Public Works Enclosures

- Large Single Door
- Small Single Door
- Double Door
- Front/Rear Door
- Quad Door
- Lighting Control Cabinets
- Pedestal
- Power Utility & Backup Battery
- Specline

Traffic Enclosures

Security Enclosures

Custom Enclosures

Options & Accessories

- Climate Control
- Electrical
- Hardware
- Paint

Build Your Own

APX NEMA 4X LARGE SINGLE DOOR ENCLOSURE

SKU: Large Single Door

APX NEMA 4X LARGE SINGLE DOOR ENCLOSURE

INDUSTRY STANDARD

UL Listed NEMA Certified Type 3R, 4X

STANDARD CONSTRUCTION

(For details see [specification sheets](#))

A. ENCLOSURE

1. The complete enclosure is made from 0.125" thick aluminum alloy type 5052-H32 to provide a strong and rigid construction. Alternative material is 14 gauge type 304 stainless steel. (Specifier must choose the material to be used.)
2. The enclosures are equipped with two (2) adjustable "C" mounting channels on both side walls and back wall, providing versatile positioning of shelves, optional panels or rack mounting angles.
3. The door frame opening is double flanged on all four (4) sides. These flanges increase the strength of the door opening and help prevent dust and liquids from dropping into the enclosure when the door is opened.
4. All exterior seams are ground smooth or sealed weathertight with silicone sealant.
5. Pole or wall mounted enclosures have welded stiffener plates to reinforce the top and bottom of rear wall. Welded bottom plates are standard on pole mounted enclosures. An optional removable bolt-on bottom plate is available.
6. (3R only) Enclosures have provisions for mounting a forced air fan system that can be thermostatically controlled, and air is exhausted through a slotted vent system in the roof overhang.

B. DOOR

1. Equipped with a three-point latching mechanism with nylon rollers at the top and bottom.
2. Door handle is 0.75" stainless steel round bar and has provisions for a padlock.
3. (3R only) The standard main door lock is Corbin #1548-1 or equal.
4. (3R only) A louvered air vent with filter retaining brackets and a disposable paper filter element is provided.
5. The main doors are sealed with closed-cell neoprene gasket.
6. The continuous door hinge is 0.075" thick stainless steel with a 0.25" stainless steel hinge pin.
7. The switch compartment with removable back panel is standard and also made from 0.125" thick aluminum alloy type 5052-H32. This back can optionally be replaced with a clear lexan window to provide for limited access inspection of operating components or instrumentation.
8. The switch compartment door hinge is 14 gauge stainless steel with a 0.120" stainless steel hinge pin.

C. FINISH

1. Natural aluminum enclosures are mill finish per federal specification QQA-250/8.
2. Painted enclosures are treated with an iron phosphate coating and dried by radiant heat.

FOR NEMA TYPE 4X RATING:

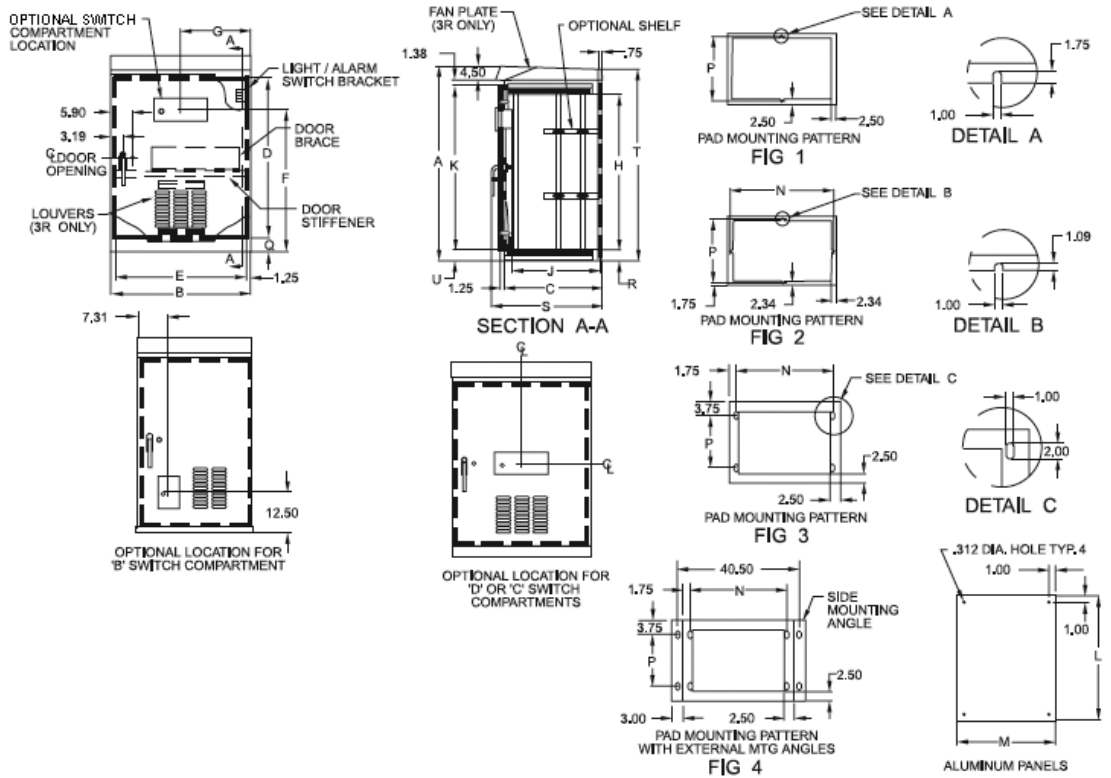
DELETE: all vents and main door lock (Corbin #1548-1), and Corbin R357SGS switch compartment lock.

ADD: Chicago #1703-100-G switch compartment lock. All through holes are sealed.

[Click to Enlarge](#)



DRAWING



DIMENSIONS (inches)																						
CATALOG NUMBER	MOUNTING OPTIONS			OVERALL ENCLOSURE			DOOR OPENING		SWITCH COMPARTMENT LOCATION		AVAILABLE EQUIPMENT SPACE		DOOR HEIGHT	PANEL SIZE		PAD MTG. PATTERN		MISCELLANEOUS DIMENSIONS				
	PED	POLE	PAD	A	B	C	D	E	F	G	H	J	K	L	M	N	P	Q	R	S	T	U
FIG.1																						
APX301815	YES	YES	YES	30.00	18.00	15.00	21.00	15.50	16.81	8.00	19.00	11.31	23.25	22.63	15.00	N/A	12.50	2.00	3.00	18.62	28.50	.88
APX362015	YES	YES	YES	36.00	20.00	15.00	27.00	17.50	23.25	10.00	25.00	11.31	29.25	28.63	17.00	N/A	12.50	2.00	3.00	18.62	34.50	.88
APX412516	YES	YES	YES	41.00	25.00	16.00	32.00	22.50	28.25	12.50	30.00	12.31	34.25	33.63	22.00	N/A	13.50	2.00	3.00	19.62	39.50	.88
APX512516	YES	YES	YES	51.00	25.00	16.00	42.00	22.50	34.25	12.50	40.00	12.31	44.25	43.63	22.00	N/A	13.50	2.00	3.00	19.62	49.50	.88
FIG.2																						
APX503017	NO	YES	YES	50.00	30.00	17.00	39.00	27.50	37.25	15.00	39.00	13.31	41.25	42.63	27.00	26.50	13.50	4.00	3.00	20.62	48.50	2.88
APX503617	NO	NO	YES	50.00	36.00	17.00	39.00	33.50	37.25	18.00	39.00	13.31	41.25	42.63	33.00	32.50	13.50	4.00	3.00	20.62	48.50	2.88
APX583017	NO	NO	YES	58.00	30.00	17.00	47.00	27.50	45.25	15.00	47.00	13.31	49.25	50.63	27.00	26.50	13.50	4.00	3.00	20.62	56.50	2.88
APX763017	NO	NO	YES	76.00	30.00	17.00	65.00	27.50	63.25	15.00	65.00	13.31	67.25	68.63	27.00	26.50	13.50	4.00	3.00	20.62	74.50	2.88
FIG.3																						
APX363624	NO	NO	YES	36.00	36.00	24.00	25.00	33.50	23.25	18.00	25.00	20.31	27.25	28.63	33.00	32.50	18.50	4.00	3.00	27.62	34.50	2.88
APX443624	NO	NO	YES	44.00	36.00	24.00	33.00	33.50	31.25	18.00	33.00	20.31	35.25	36.63	33.00	32.50	18.50	4.00	3.00	27.62	42.50	2.88
APX553826	NO	NO	YES	55.00	38.00	26.00	44.00	35.50	39.37	19.00	44.00	22.31	46.25	48.25	35.00	34.50	18.50	4.00	3.00	29.62	53.50	2.88
APX554426	NO	NO	YES	55.00	44.00	26.00	44.00	41.50	39.37	22.00	44.00	22.31	46.25	48.25	41.00	40.50	18.50	4.00	3.00	29.62	53.50	2.88
APX723618	NO	NO	YES	72.00	36.00	18.00	61.00	33.50	45.00	18.00	61.00	14.31	63.25	65.25	45.00	32.50	13.50	4.00	3.00	21.62	70.50	2.88
APX773826	NO	NO	YES	77.00	38.00	26.00	66.00	35.50	50.00	19.00	66.00	22.31	68.25	70.25	35.00	34.50	18.50	4.00	3.00	29.62	75.50	2.88
APX774426	NO	NO	YES	77.00	44.00	26.00	66.00	41.50	50.00	22.00	66.00	22.31	68.25	70.25	41.00	40.50	18.50	4.00	3.00	29.62	75.50	2.88

OPTIONS:

- **Panels**
- Lock: Keying, other than standard
- Windows
- Switch Compartments
- Painted Finishes
- Filters
- Rack Rails
- Shelves
- Panels, Center
- Custom Equipment Mounting
- Pedestal Adapter (reinforced bottom)
- **Swing Rack**

Climate Control

- **Air Conditioner**
- **Sunshields**
- **Insulation**
- **Heater**

- **Forced-Air Ventilation Fan (3R Only)**

APX Catalog Numbers: APXLS301815, APXLS362015, APXLS412516, APXLS512516, APXLS503017, APXLS503617, APXLS583017, APXLS763017, APXLS363624, APXLS443624, APXLS553826, APXLS554426, APXLS723618, APXLS773826, APXLS774426 (formerly TCLS301815, TCLS362015, TCLS412516, TCLS512516, TCLS503017, TCLS503617, TCLS583017, TCLS763017, TCLS363624, TCLS443624, TCLS553826, TCLS554426, TCLS723618, TCLS773826, TCLS774426)

APX Enclosures, Inc.
200 Oregon Street, Mercersburg, PA 17236
Tel: 717-328-9399

Email: info@apx-enclosures.com



[Home](#) [About Us](#) [Products](#) [Quality](#) [Government](#) [Engineering Specifications](#) [Contact Us](#)