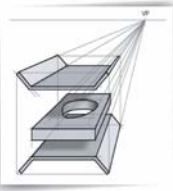


9.4 3-Dimensional Drawing

Perspective Drawing

- In a perspective drawing, parts of an object that are close to the eye are shown larger than parts further away. Therefore, objects appear more realistic.
- Lines converge towards a vanishing point on the horizon line.
- In a one-point perspective drawing, the object is shown from a front face with lines converging towards a single vanishing point.

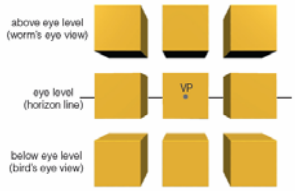


Copyright "Design in Life, Upper Secondary"

9.4 3-Dimensional Drawing

Perspective Drawing

- The position of a cube is drawn in relation to the vanishing point in one-point perspective.





9.4 3-Dimensional Drawing



Perspective Drawing

- Steps to construct a drawing in one-point perspective:

Step 1. Decide the viewing position, then draw the horizon line and the bounding box for the front face of the object.

Step 2. Mark the position of the vanishing point on the horizon line, then draw lines from each corner of the front face to the vanishing point.

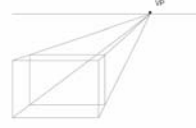



9.4 3-Dimensional Drawing

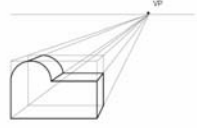
Perspective Drawing

- Steps to construct a drawing in one-point perspective:

Step 3. Add horizontal and vertical lines to complete the rear face of the bounding box. You will need to guess the position of this face so that the drawing of the box looks proportional.



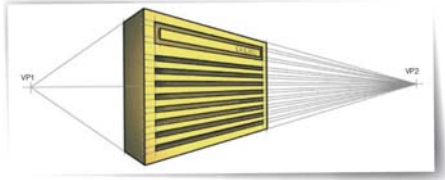
Step 4. When the bounding box is complete, the detail of the object can be added.



9.4 3-Dimensional Drawing

Perspective Drawing

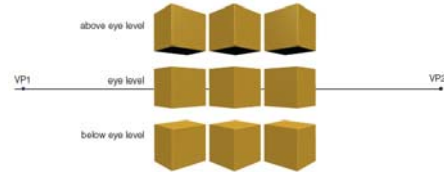
- In a two-point perspective drawing, the object is shown from a front edge with lines converging towards two vanishing points.



9.4 3-Dimensional Drawing

Perspective Drawing

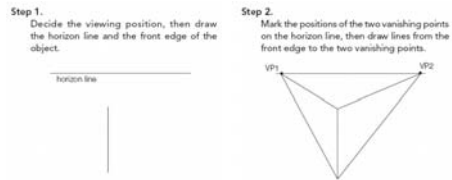
- The position of a cube is drawn in relation to two vanishing points in two-point perspective.



9.4 3-Dimensional Drawing

Perspective Drawing

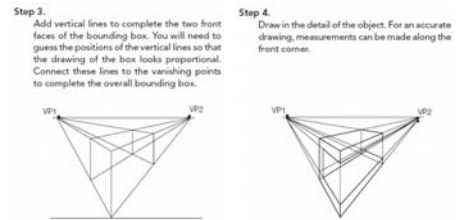
- Steps to construct a drawing in two-point perspective:



9.4 3-Dimensional Drawing

Perspective Drawing

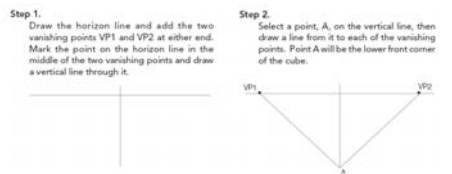
- Steps to construct a drawing in two-point perspective:



9.4 3-Dimensional Drawing

Perspective Drawing

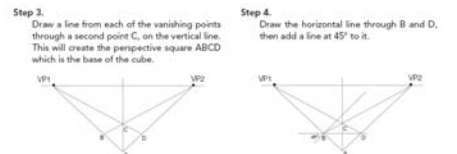
- Steps to construct an accurate drawing of a cube in two-point perspective:



9.4 3-Dimensional Drawing

Perspective Drawing

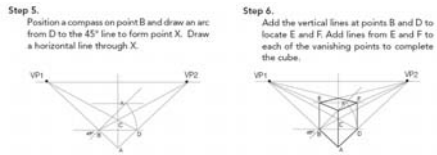
- Steps to construct an accurate drawing of an object in two-point perspective, using the plan view:



9.4 3-Dimensional Drawing

Perspective Drawing

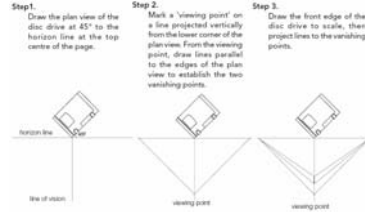
- Steps to construct an accurate drawing of an object in two-point perspective, using the plan view:



9.4 3-Dimensional Drawing

Measured Perspective Drawing

- Steps to construct an accurate drawing of an object in two-point perspective, using the plan view:



9.4 3-Dimensional Drawing

Perspective Drawing

- Steps to construct an accurate drawing of an object in two-point perspective, using the plan view:

