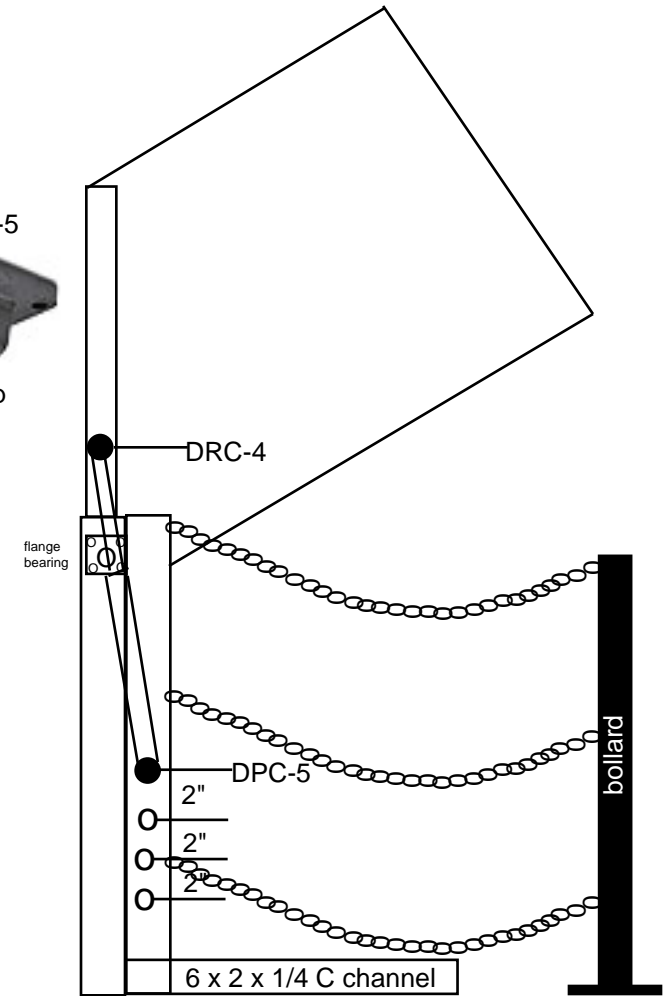
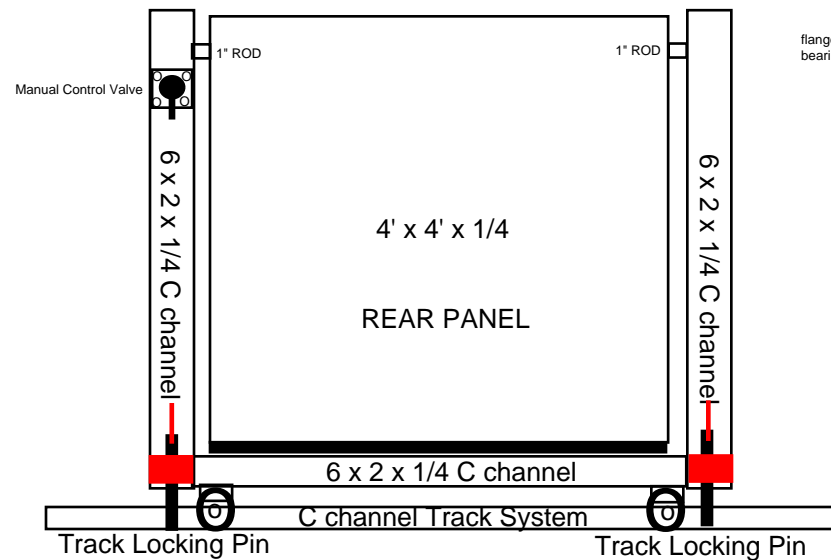
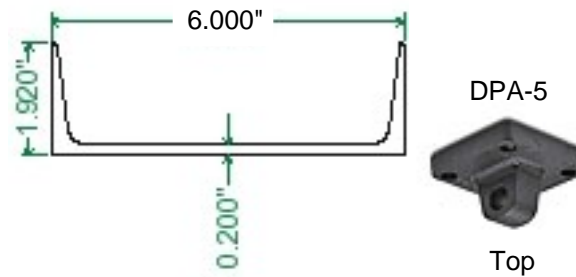
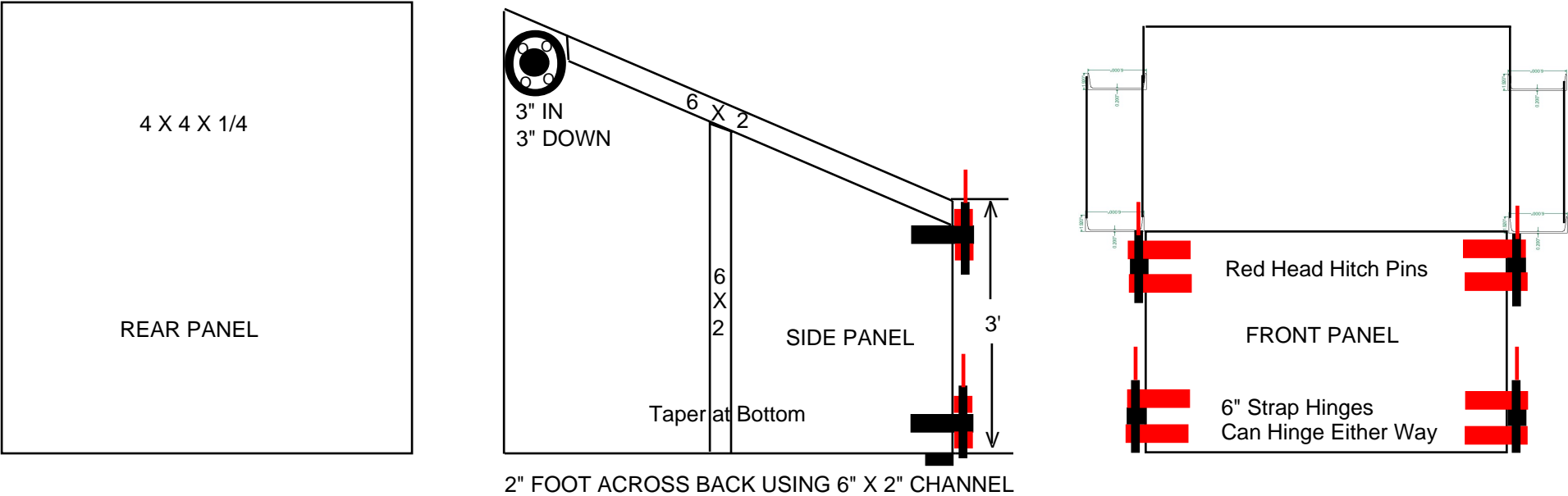


Edited by Foxit PDF Editor
Copyright (c) by Foxit Software Company, 2004
For Evaluation Only.



<http://www.globalindustrial.com/g/safety/parking-lot/protectors-bollards/steel-bollard-removable-rubber-cap>



A	B
PIECES/UNITS	NOMENCLATURE
2	4 bolt 1" cast iron flange Grainger 3FCX4
7	A36 6 x 2 x 1/4 C channel http://mysteelyard.com
2	D64240DT-M CYLINDER 4in BORE 24in STROKE
1	CVR-438D2-HL VALVE 1/4in NPT 4-PORT 3-POS
4	DPA-5 REAR PIVOT EYE USE WITH 4in
2	DRC-4 ROD-CLEVIS 3/4-16 FOR D52 & D64
2	DPC-5 REAR CLEVIS BRACKET USE WITH 4in
2	FVU14 FLOW CONTROL VALVES
1	N14NAT100 TUBING, NYLON, 1/4 IN OD, NATURAL, 100FT ROLL
10	MS14-14N MALE STRAIGHT 1/4 OD 1/4 IN MNPT